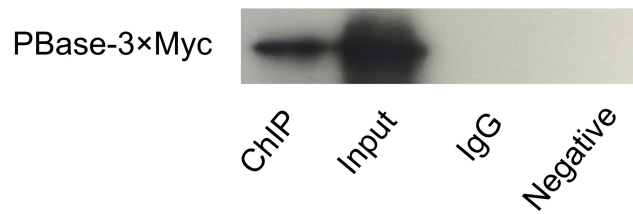


## Supplementary Data



**Figure S1. Chromatin immunoprecipitation of PBase-3×Myc.**

Chromatin complex were immunoprecipitated with anti-Myc or control IgG antibody 48h after transfection. The immune complex and the input were analyzed by western blot with anti-Myc antibody.

<b>Chromosome</b>	<b>PB<sup>-1</sup></b>	<b>PB<sup>-2</sup></b>	<b>PB<sup>+1</sup></b>	<b>PB<sup>+2</sup></b>	<b>Total</b>
<b>1</b>	42735	41049	39814	47504	171102
<b>2</b>	48159	32957	53482	42130	176728
<b>3</b>	41531	37864	38426	37714	155535
<b>4</b>	37039	37355	39249	36805	150448
<b>5</b>	34823	34340	24216	37084	130463
<b>6</b>	36810	34973	33071	37027	141881
<b>7</b>	33453	31689	31483	31169	127794
<b>8</b>	33241	31593	29071	33448	127353
<b>9</b>	27979	27124	25550	30823	111476
<b>10</b>	31030	30579	30157	28656	120422
<b>11</b>	30988	30318	32039	30529	123874
<b>12</b>	27271	27510	19690	29797	104268
<b>13</b>	28418	28162	28568	27067	112215
<b>14</b>	28602	28340	28348	27097	112387
<b>15</b>	25226	25631	18559	27486	96902
<b>16</b>	25060	23742	21915	24846	95563
<b>17</b>	22145	21950	22700	21597	88392
<b>18</b>	24483	23250	23649	23243	94625
<b>19</b>	14187	13771	13049	16277	57284
<b>X</b>	26849	17732	28639	23107	96327
<b>Y</b>	262	173	299	244	978
<b>Total</b>	620291	580102	581974	613650	2396017

**Table S1. PBase binding sites identified for each chromosome.**

Four groups of CHIP-chip data were analyzed. PB<sup>+1</sup> and PB<sup>+2</sup> groups: *PB* transposon and PBase were both transfected into the cells. PB<sup>-1</sup> group and PB<sup>-2</sup> groups: only PBase was transfected into the cells.