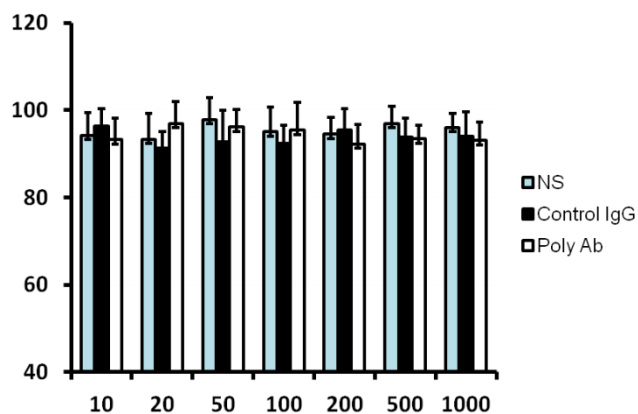


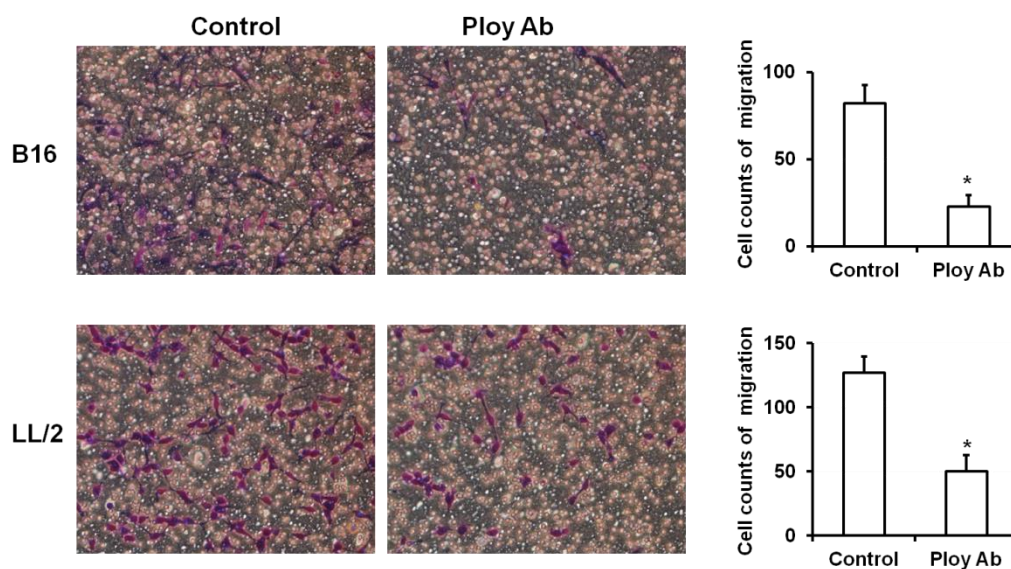
## Supplementary Information

Supplementary information includes:

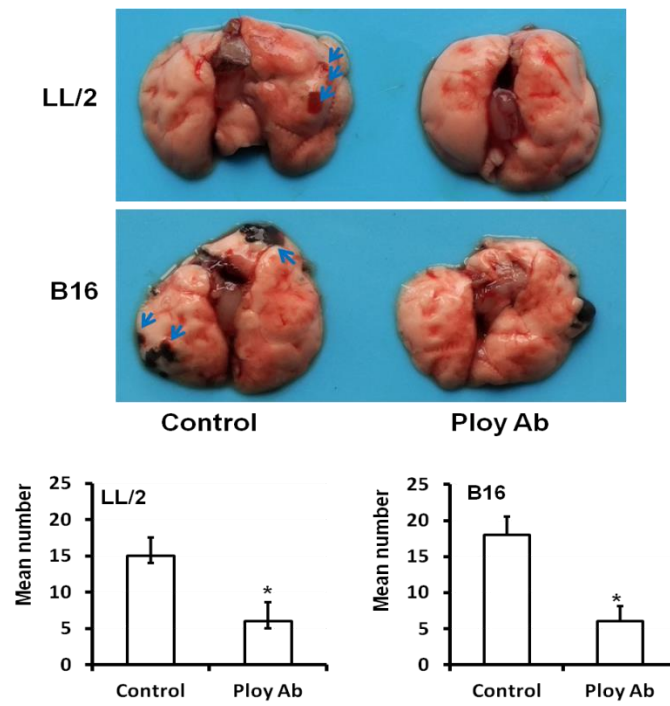
Supplementary Figures S1-S3



**Supplementary Figures S1.** Effect of Poly Abs on 3T3 cells proliferation by MTT analysis.



**Supplementary Figures S2.** The transwell migration analysis indicated that Poly Abs inhibited B16 and LL/2 tumor cells migration (x 200). Columns, mean; bars, SD ( $n = 3$ ; \*,  $p < 0.05$ ; \*\*,  $p < 0.01$ ).



**Supplementary Figures S3.** Poly Abs inhibited B16 and LL/2 tumor cells lung metastasis *in vivo*.

Columns, mean; bars, SD (n = 3; \*,  $p < 0.05$ ).