

Figure S1

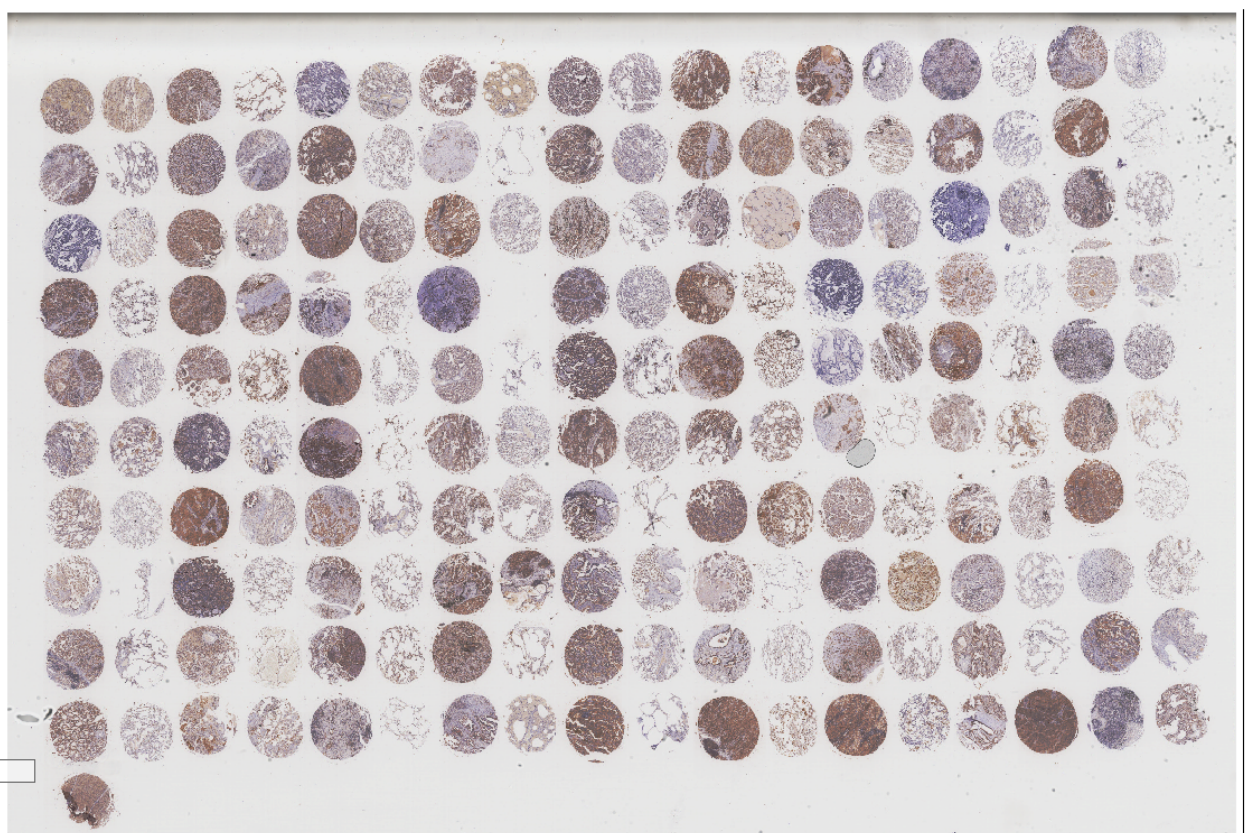
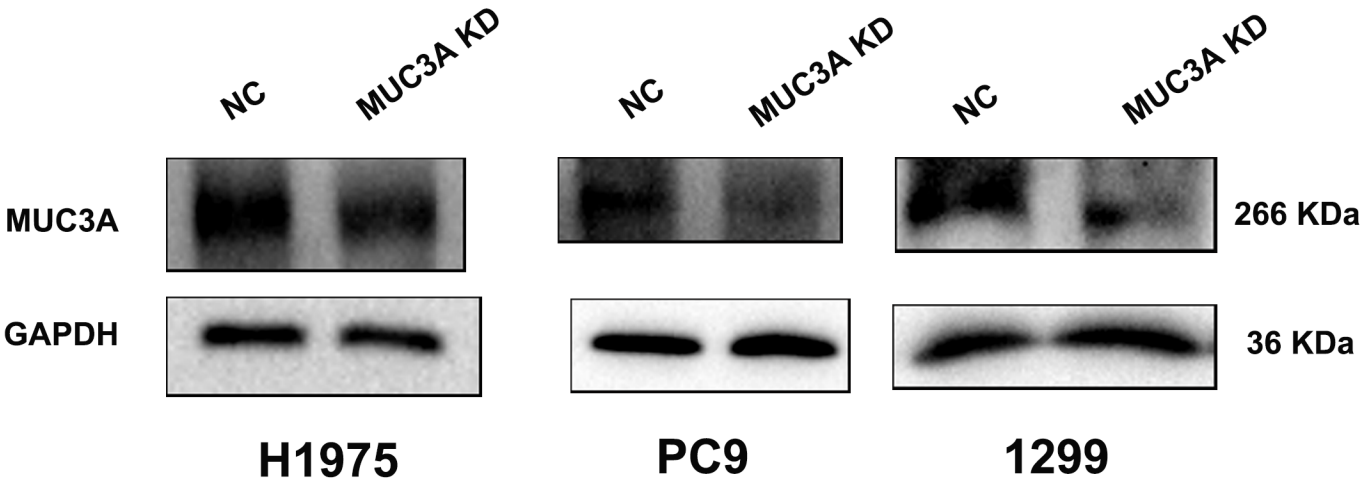


Figure S2



**Table S1**

REAGENT or RESOURCE	SOURCE	IDENTIFIER
MUC3A	abcam	Cat#ab138510
PD-L1	BD biosciences	Cat#557924
EGFR	proteintech	Cat#66455-1-Ig
p-EGFR	Cell Signaling Technology	Cat#2220S
AKT	Cell Signaling Technology	Cat#4691
p-AKT	Cell Signaling Technology	Cat#4060
MEK	Cell Signaling Technology	Cat#11049
p-MEK	Cell Signaling Technology	Cat#9154
ERK	proteintech	Cat#16443-1-AP
p-ERK	Cell Signaling Technology	Cat#4370
GAPDH	proteintech	Cat#10494-1-AP
HRP-conjugated Affinipure Goat Anti-Rabbit IgG(H+L)	proteintech	Cat#SA00001-2
HRP-conjugated Affinipure Goat Anti-Mouse IgG(H+L)	proteintech	Cat#SA00001-1
MEK inhibitor	MedChemExpress	Cat#HY-10999A
PI3K inhibitor	MedChemExpress	Cat#HY-50094
SC79	MedChemExpress	Cat#HY-18749
Honokiol	MedChemExpress	Cat#HY-N0003

**Table S2 Correlation between PD-L1 levels in NSCLC patients and their clinicopathologic characteristics**

Clinical pathology	PD-L1 <sup>low</sup>	PD-L1 <sup>high</sup>	N	<i>p</i> value
Gender				
Male	24	27	51	<i>p</i> = 0.869
Female	20	21	41	
Age				
≤ 60	20	18	38	<i>p</i> = 0.439
> 60	24	30	54	
Tumor size (cm)				
< 4	19	26	45	<i>p</i> = 0.229
≥ 4	19	15	34	
None	6	7	13	
Histological grade				
I/I-II	4	3	7	<i>p</i> = 0.300
II	26	24	50	
II-III/III	11	20	31	
I-III	3	1	4	
Clinical Stage				
I	12	13	25	<i>p</i> = 0.942
II	11	10	21	
III-IV	11	10	21	
Non	10	15	25	
Lymph node status				
< 4	11	14	25	<i>p</i> = 0.519
≥ 4	31	29	60	
Non	2	5	7	
Carcinoma				
Primary	44	48	92	<i>p</i> < 0.0001*
Adjacent	88	0	88	

*P* value represents the probability from a chi-square test for tissue PD-L1 levels between variable subgroups, \**p* < 0.05.