

Figure S1. Landscape of CCL20 expression in pan-cancer.

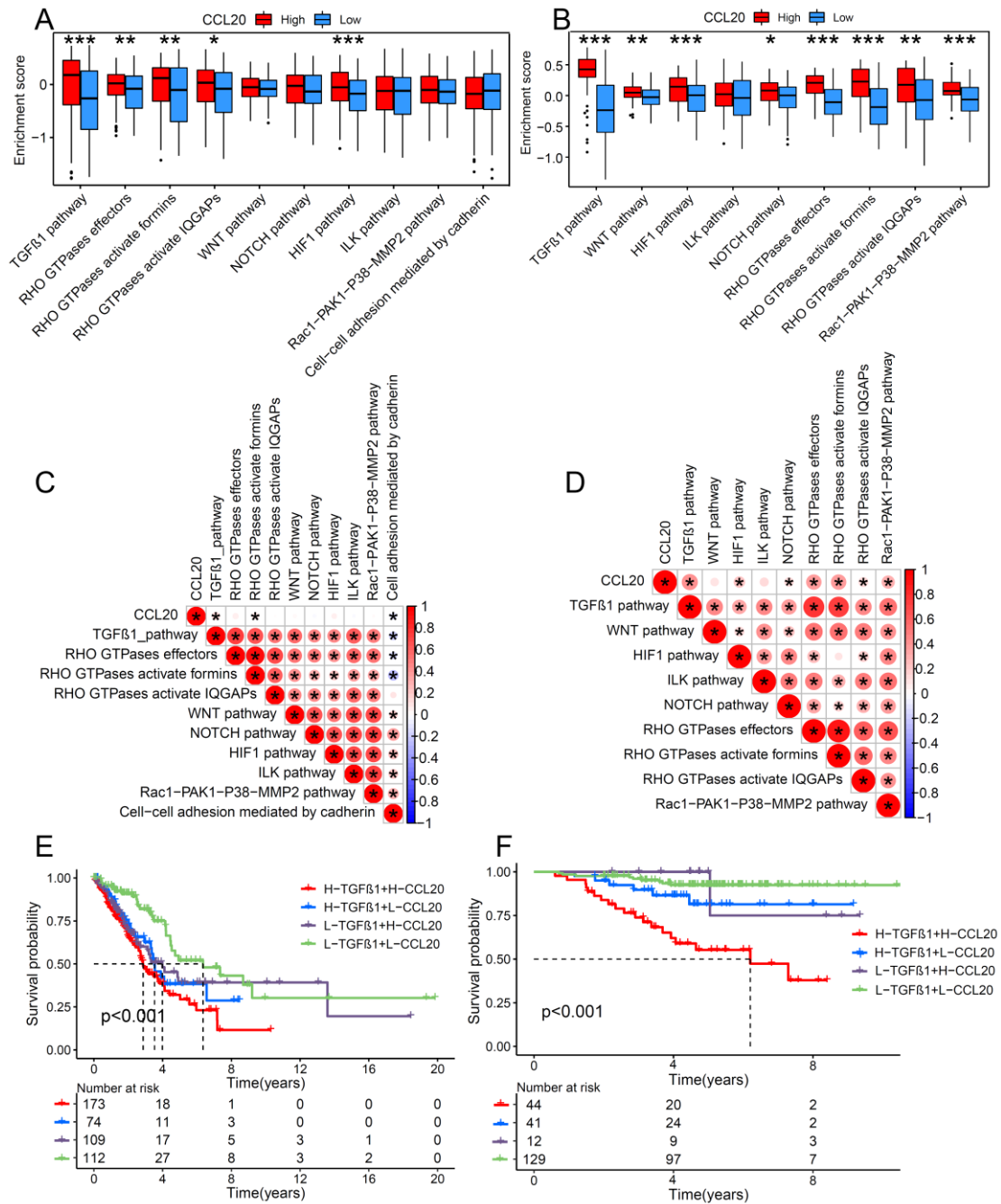


Figure S2. The relationship between CCL20 and EMT-related pathways. Differences in EMT-related pathways between high CCL20 and low CCL20 groups in TCGA cohort (A) and GSE31210 cohort (B). Correlation analysis of CCL20 and EMT-related pathways in TCGA cohort (C) and GSE31210 cohort (D). OS analysis for subgroup patients stratified by both CCL20 and TGF- β in TCGA cohort (E) and GSE31210 cohort (F)

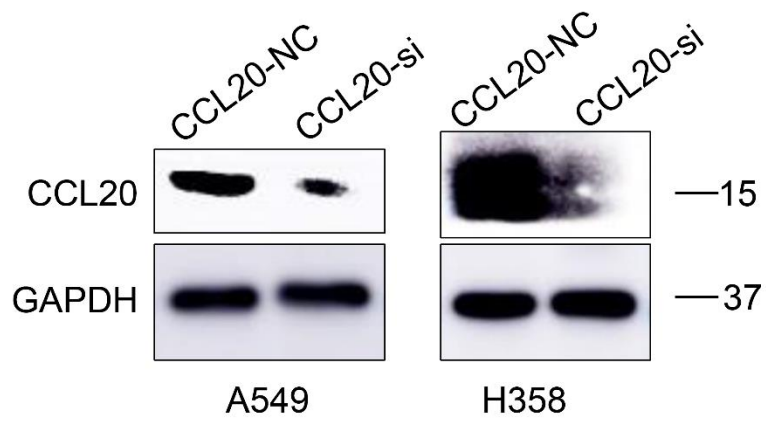


Figure S3. The knockdown efficiency of CCL20 in A549 and H358 cell lines was examined by western blot. GAPDH was served as control.