

1 **Figure S1 (A)** Analysis of gut microbiota of ICU patients (n=10) and healthy
2 volunteers (n=14) at the genus level; **(B)** PCA analysis of gut microbiota of ICU
3 patients and healthy volunteers; **(C)** Analysis of gut microbiota of post-stroke patients
4 (n=9) and healthy volunteers (n=9) at the genus level; **(D)** PCA analysis of gut
5 microbiota of post-stroke patients and healthy volunteers. ICU: intensive care unit.

6 **Figure S2 Semi-quantitative analysis of Figure3 D, E, G, H.**

7 **Figure S3 (A, G) Semi-quantitative analysis of of Figure 6A, G. (H)** The effect of
8 LRP6 KO and overexpression on gut permeability.

9 **Figure S4 Histological analysis of colon in the animal models.** The protective role
10 of LPR6 in DSS-induced colitis.

11

12

Fig S1

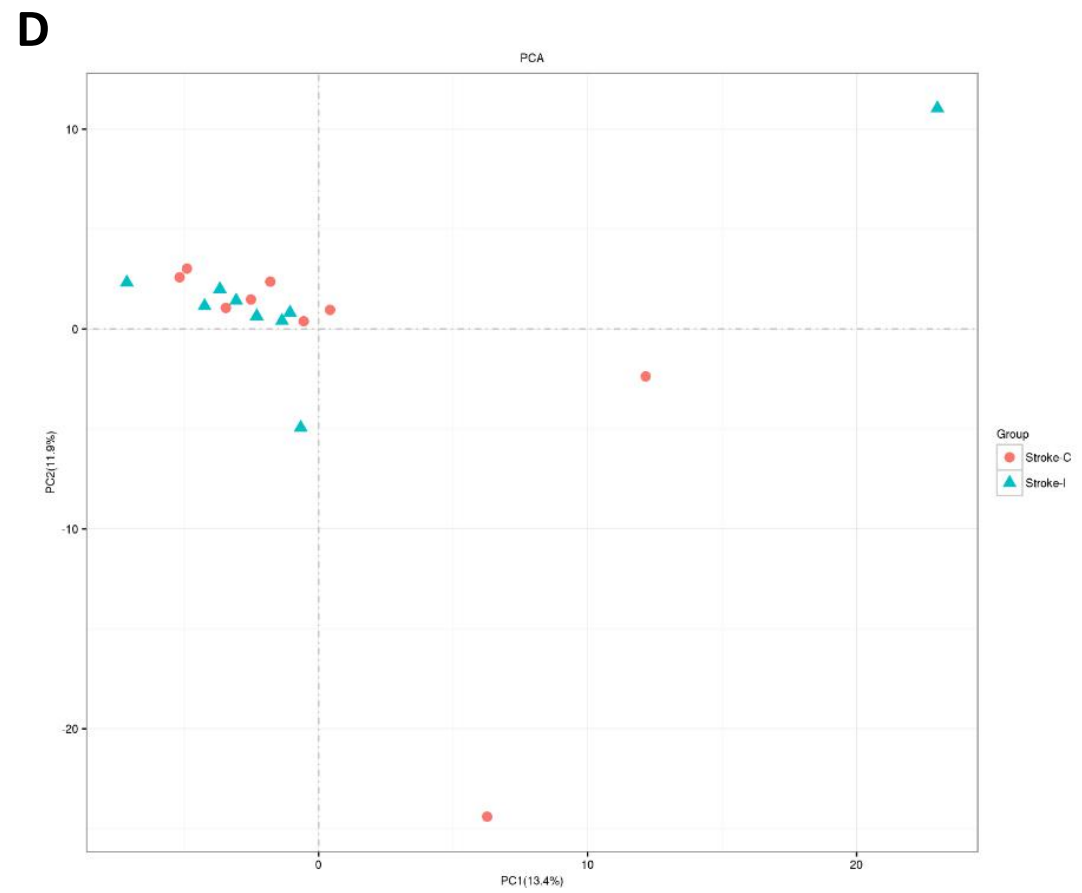
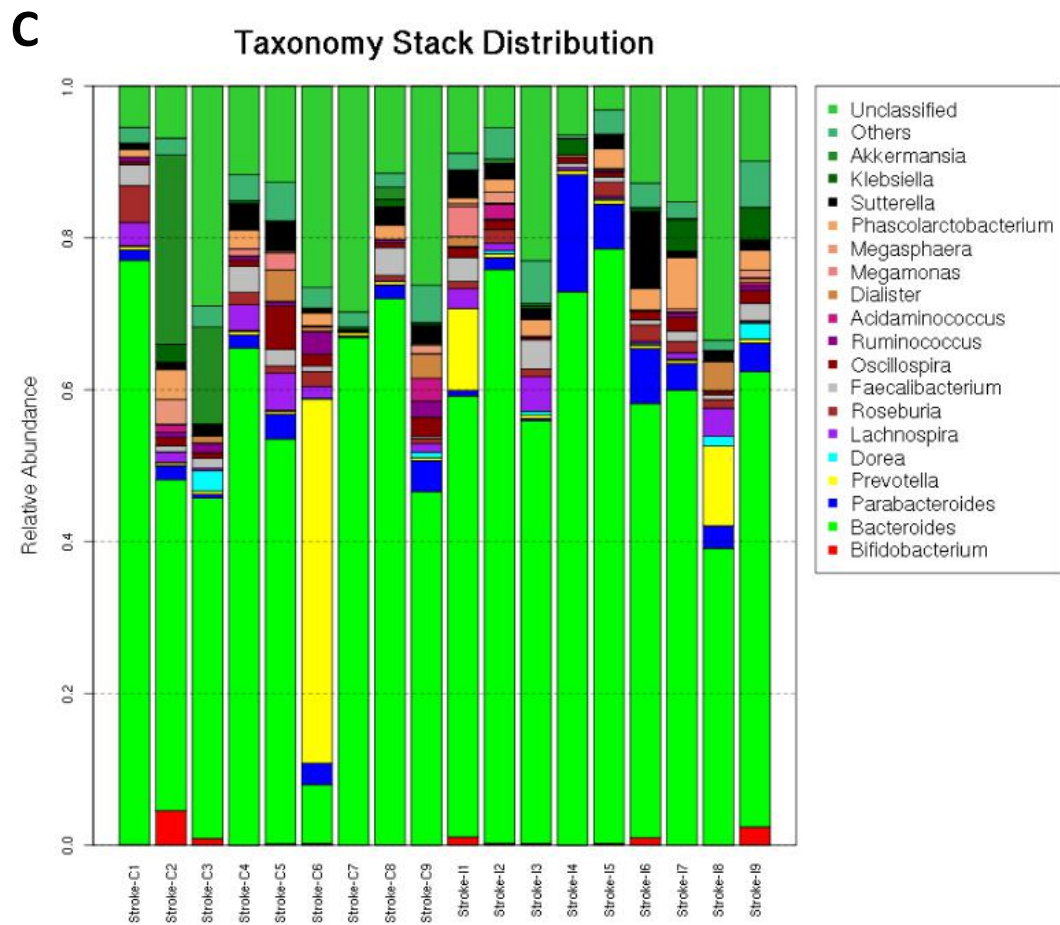
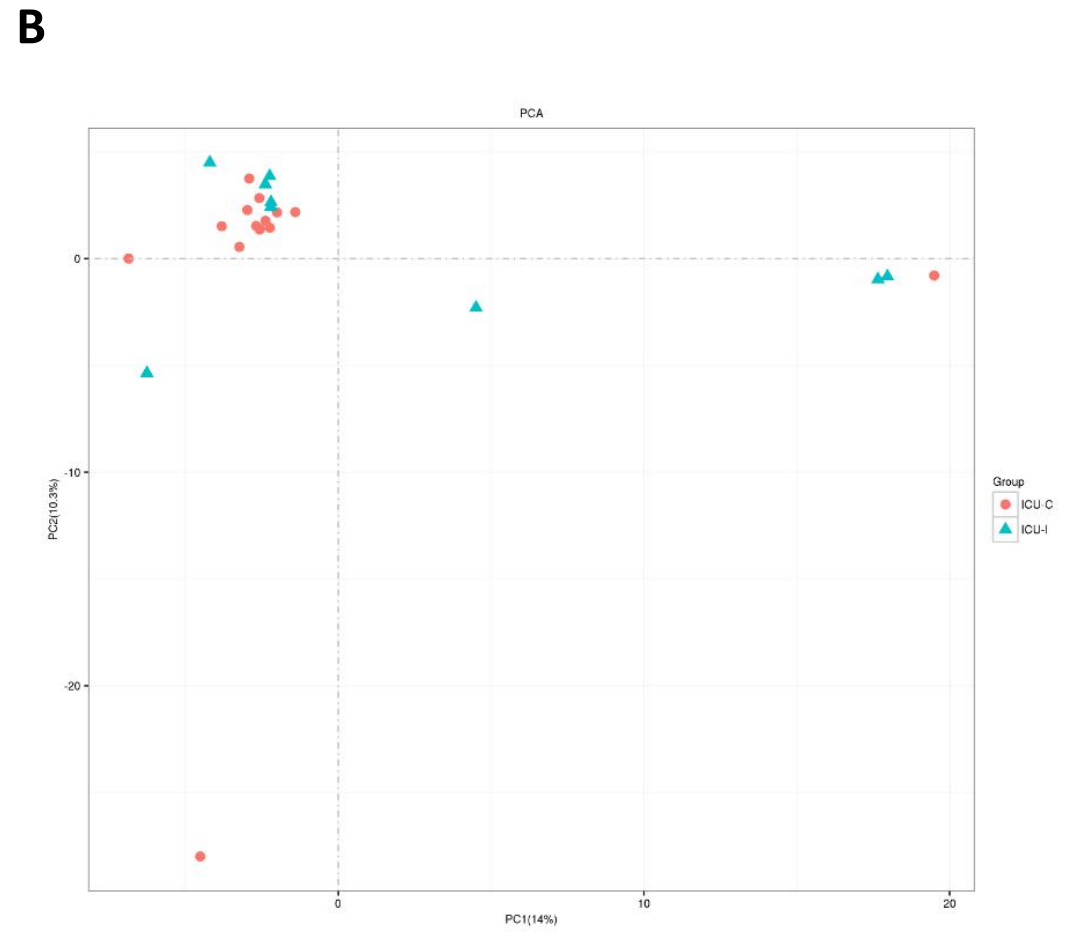
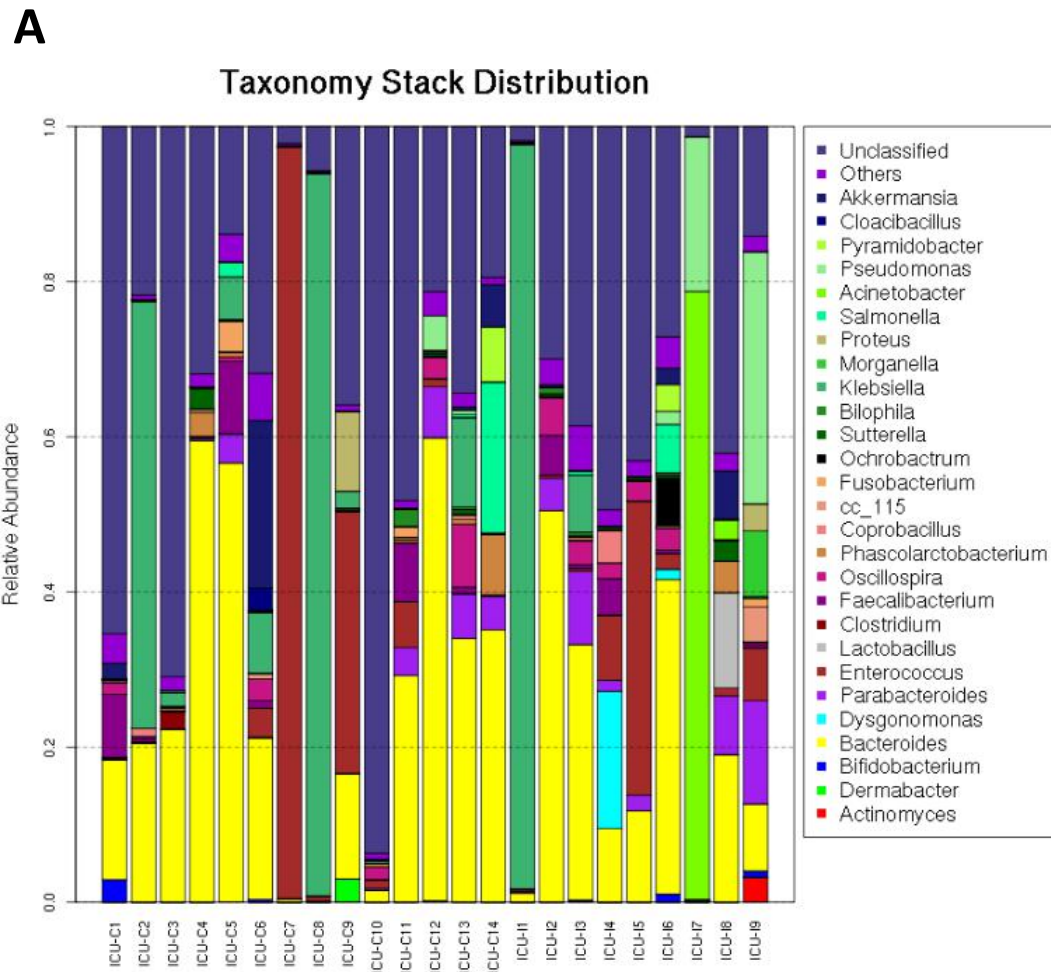
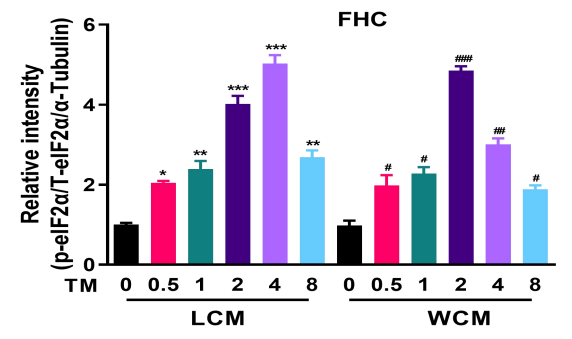
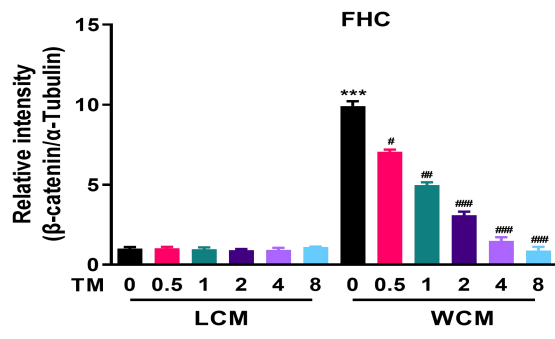
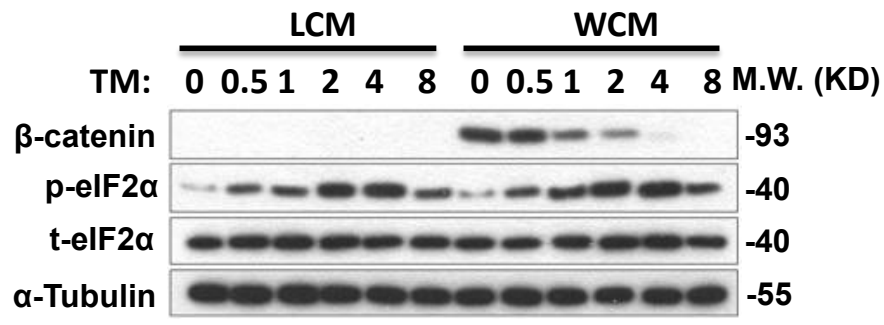
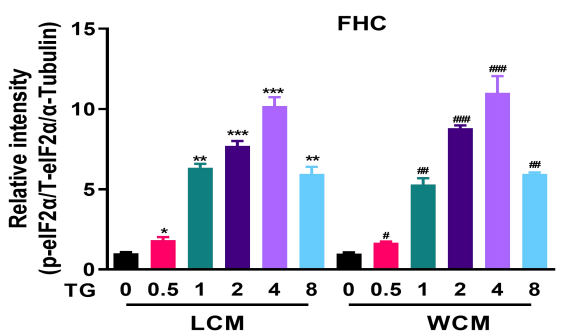
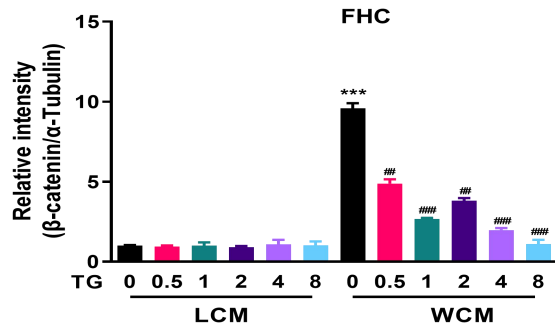
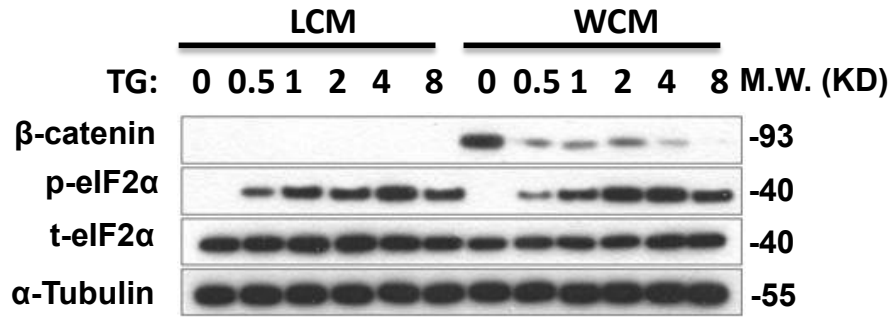


Fig S2

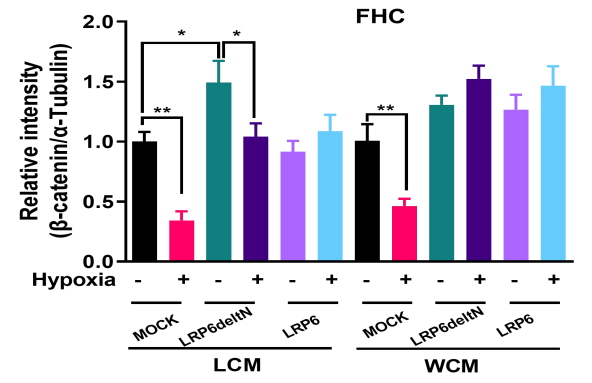
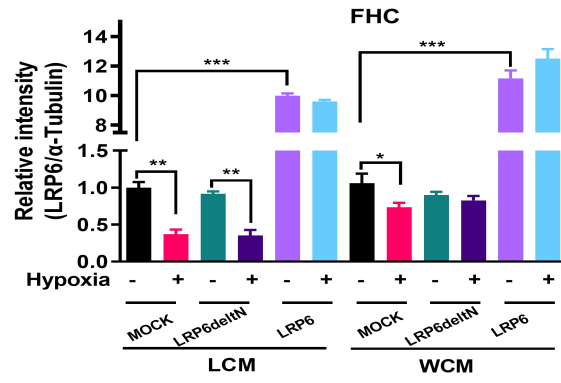
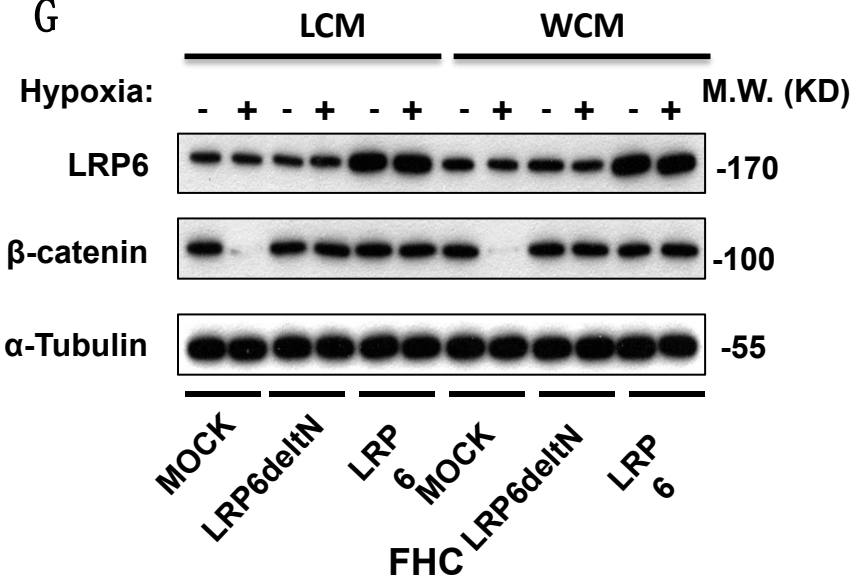
D



E



G



H

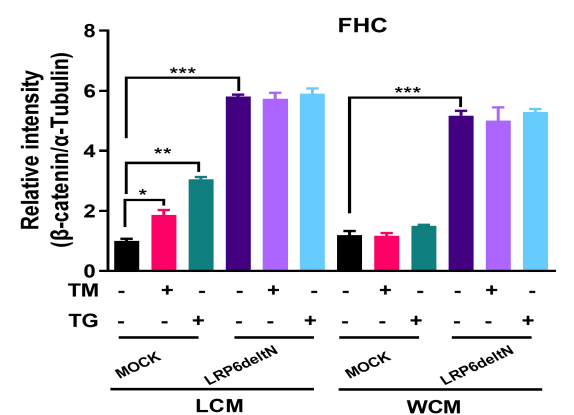
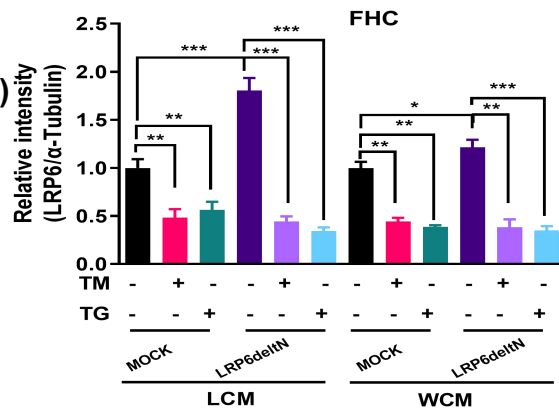
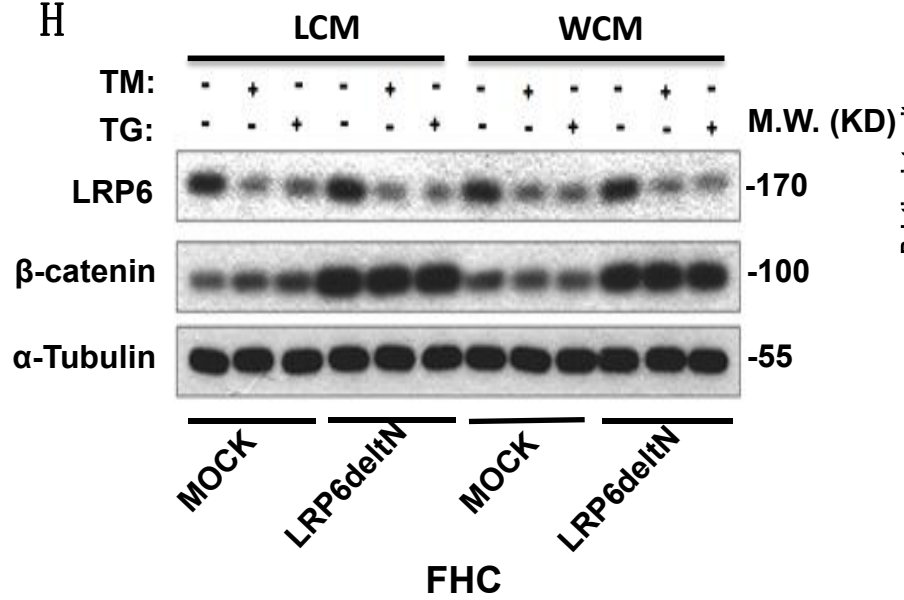
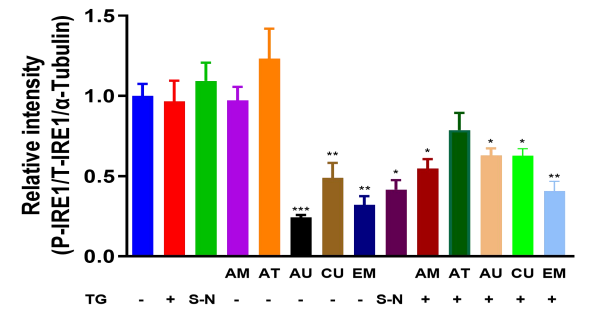
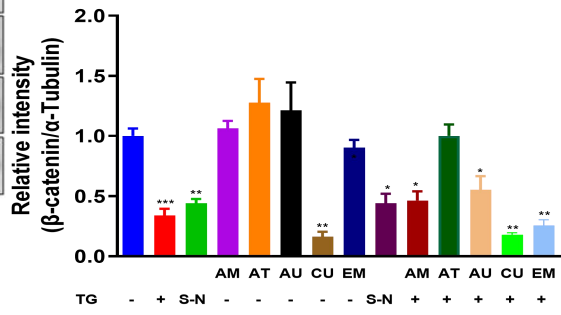
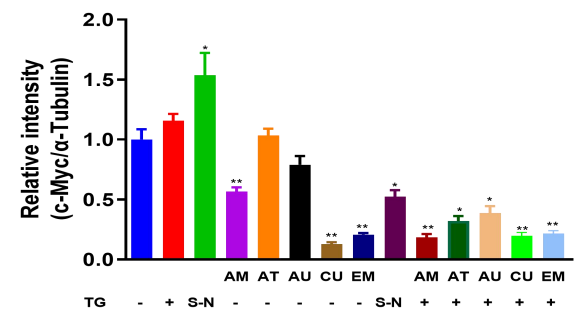
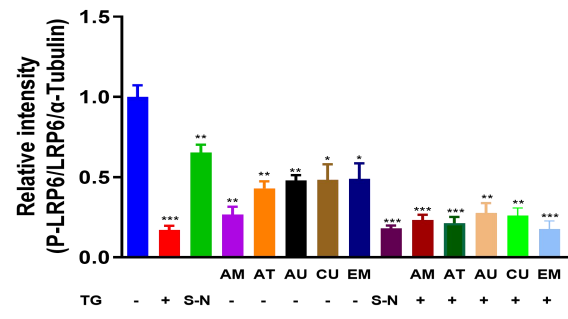
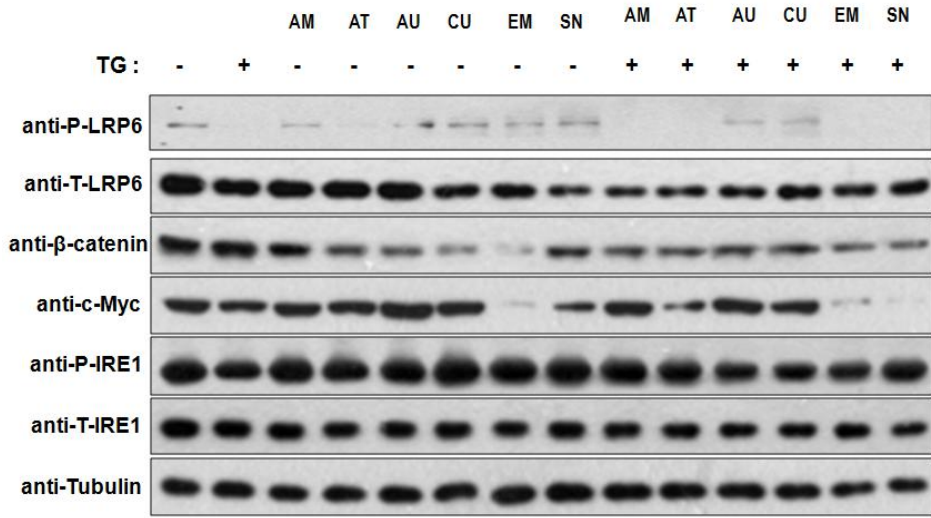
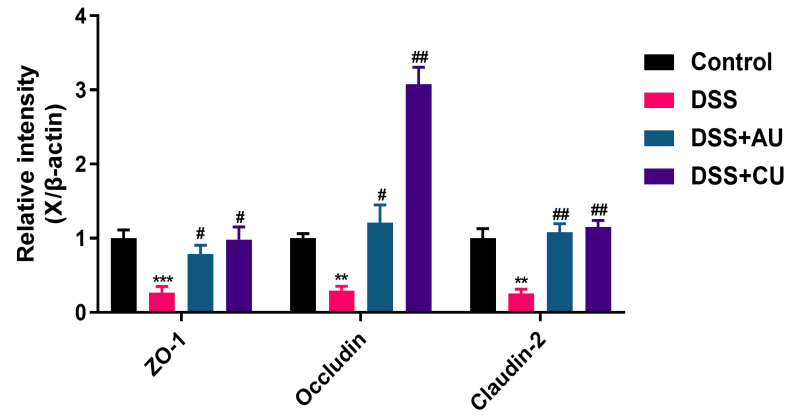
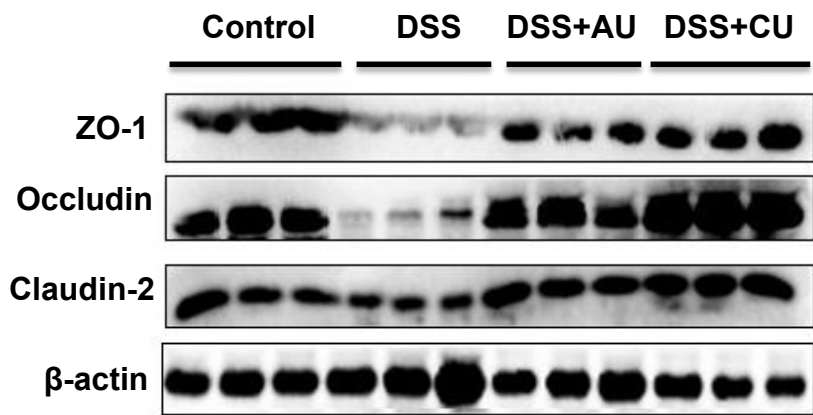


Fig S3

A



G



H

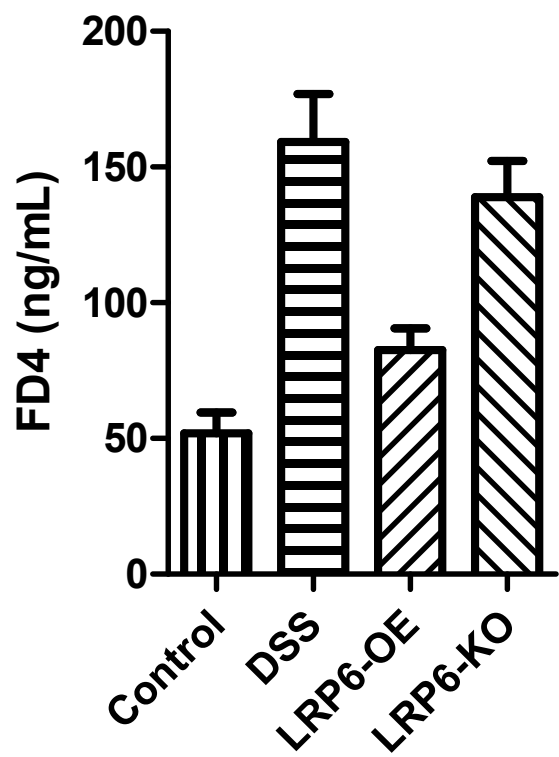


Fig S4

A

