

Table S1: Univariate and multivariate analysis with a Cox proportional hazard regression model for overall survival.

variable	Univariate Analysis			Multivariate Analysis		
	HR	95% CI	<i>p</i> value	HR	95% CI	<i>p</i> value
Age	1.103	0.768-1.585	0.596	-	-	-
Gender	0.680	0.366-1.262	0.221	-	-	-
HBV DNA load	1.289	0.902-1.842	0.163	-	-	-
ALB	0.780	0.550-1.106	0.163	-	-	-
Liver cirrhosis	0.827	0.583-1.172	0.285	-	-	-
Grade	1.134	0.670-1.918	0.639	-	-	-
AFP	1.660	1.171-2.354	0.004*	1.450	1.013-2.076	0.042*
Tumor size	2.073	1.448-2.967	<0.001*	1.698	1.153-2.500	0.007*
No. of tumors	2.122	1.406-3.202	<0.001*	1.903	1.241-2.918	0.003*
MVI	2.028	1.407-2.923	<0.001*	1.775	1.208-2.609	0.004*
Edmondson-Steiner classification	1.657	1.161-2.366	0.005*	1.796	1.254-2.571	0.001*
FCN3 expression	0.298	0.205-0.432	<0.001*	0.446	0.294-0.675	<0.001*

* Significant results ($P < 0.05$) are given in bold.

Abbreviations: HR, hazard risk ratio; CI, confidence interval.

Table S2: Primer sequences used in this study.

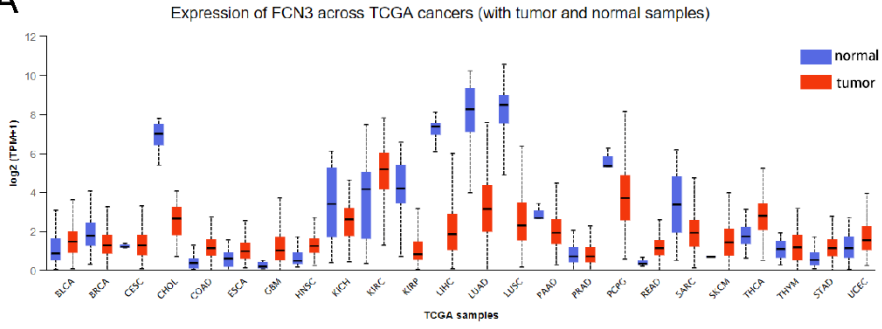
Gene	Sequence (5'-3')
GAPDH-F	GTCTCCTCTGACTTCAACAGCG
GAPDH-R	ACCACCCTGTTGCTGTAGCCAA
FCN3-F	GTGAGCCAGGAGATCCAGTGAAC
FCN3-R	GCCCTCAGGTAGGCACAGAT
SBDS-F	CAGTGCGTTTGGAACAGATGACC
SBDS-R	CCTAAACATCTGCTCCAGTTGTG
YBX1-F	GCGAAGGTTCCCACCTTACT
YBX1-R	GTTGTCAGCACCCCTCCATCA
EIF6-F	CCCAGACACAGTGCAGATTAG
EIF6-R	AAGACTTCCACCTTGAGCAC
siFCN3#1	GCAUCCUGUUACCGAUCAAUU UUGAUCGGUAACAGGAUGCAU
siFCN3#2	AGUCAAUUGCCAUAUUUGUGGG CACAAAUAUGGCAUUGACUGG
siYBX1#1	GGAGUUUGAUGUUGUUGAAGG UUCAACAACAUCAAAUCCAC
siYBX1#2	CAAGGAAGAUGUAUUUGUACA UACAAAUAACAUCUCCUUGGU
siControl (Scramble)	UUCUCCGAACGUGUCACGUTT ACGUGACACGUUCGGAGAATT
ChIP-Primer-F	TGAGCATTTAGAAGCAAGAGAAGG
ChIP-Primer-R	ATGGAGCAAGCACAAACAAAACAA

Table S3: Primary antibodies used in this study.

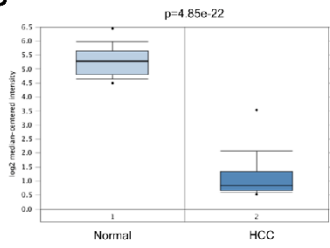
Antibody	Company	Cat No.	Application
FCN3	Biorbyt	Orb450180	IHC: 1/100
FCN3	Proteintech	11867-1-AP	WB: 1/500
Beta-Tubulin	Proteintech	10094-1-AP	WB: 1/2000
p53	Proteintech	60283-2-Ig	WB: 1/2000
Bax	Proteintech	60267-1-Ig	WB: 1/5000; IHC: 1/500
Bcl2	Proteintech	60178-1-Ig	WB: 1/2000; IHC: 1/10000
Cleaved caspase3	Cell signaling technology	#9664	WB: 1/1000; IHC: 1/2000
His-tag	ABclonal	AE003	WB: 1/2000; IP: 1/50
Myc-tag	ABclonal	AE010	WB: 1/500; IP: 1/50
SBDS	Proteintech	17618-1-AP	WB: 1/500; IP: 1/200
EIF6	ABclonal	A1818	WB: 1/500; IF: 1/50
YBX1	Proteintech	20339-1-AP	WB: 1/500; IP: 1/500
RPL5	Proteintech	29092-1-AP	WB: 1/500
RPL11	Proteintech	16277-1-AP	WB: 1/500; IP: 1/50
RPL23	Proteintech	16086-1-AP	WB: 1/500
MDM2	Proteintech	66511-1-Ig	WB: 1/1000

Fig.S1

A

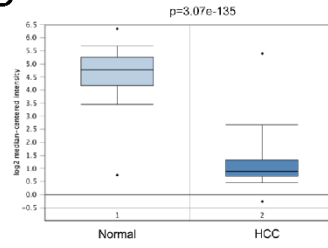


B



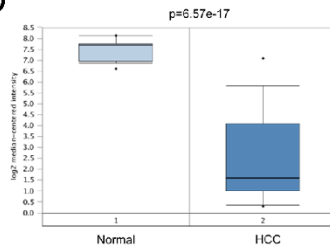
Mas Liver

C



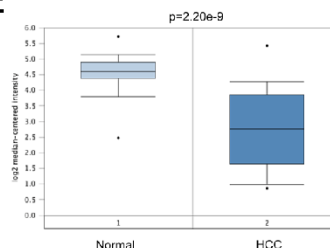
Roessler Liver

D



Roessler Liver 2

E



Wurmbach Liver

Fig.S2

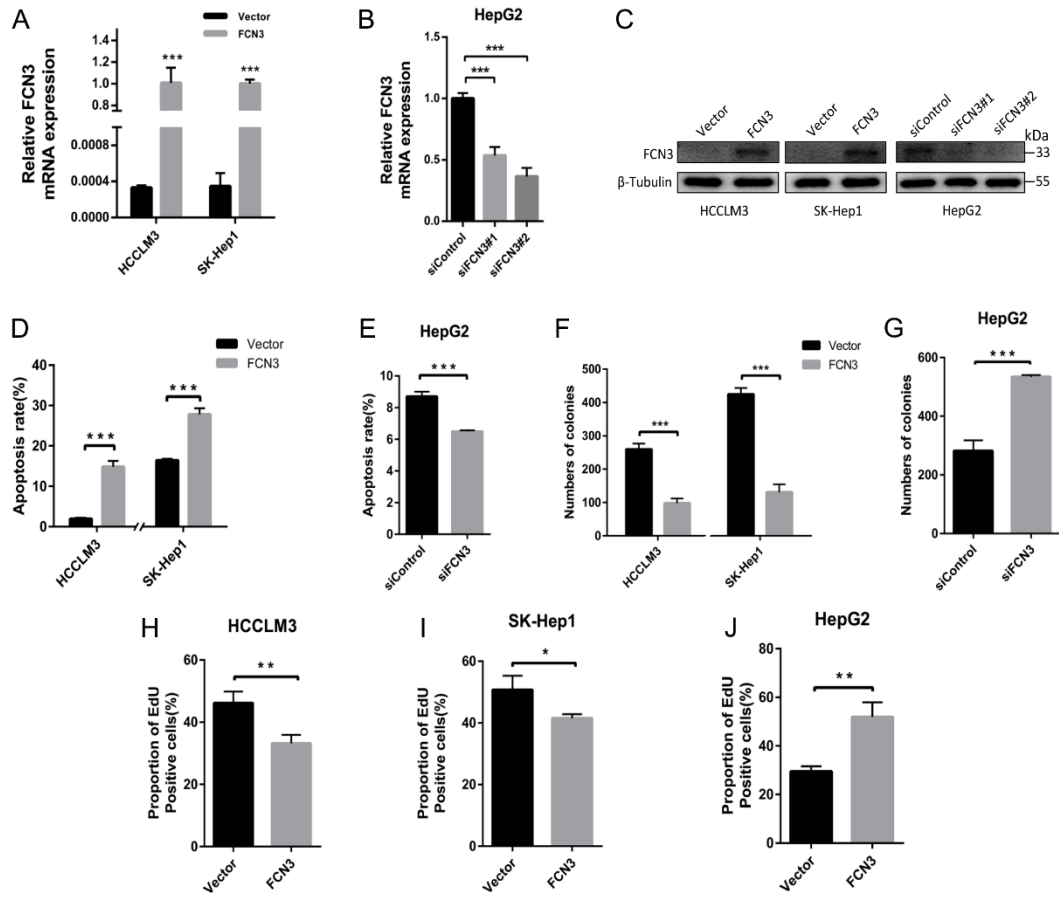


Fig.S3

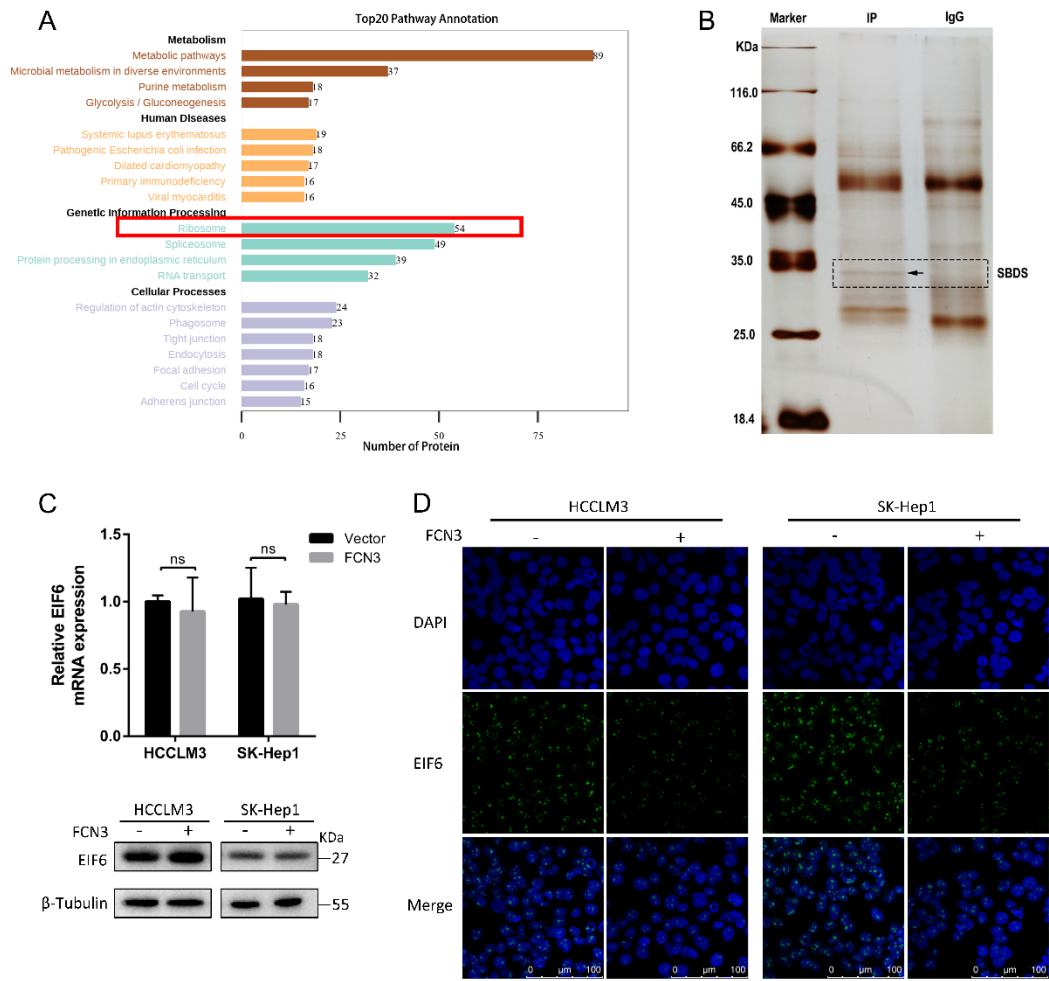


Fig.S4

