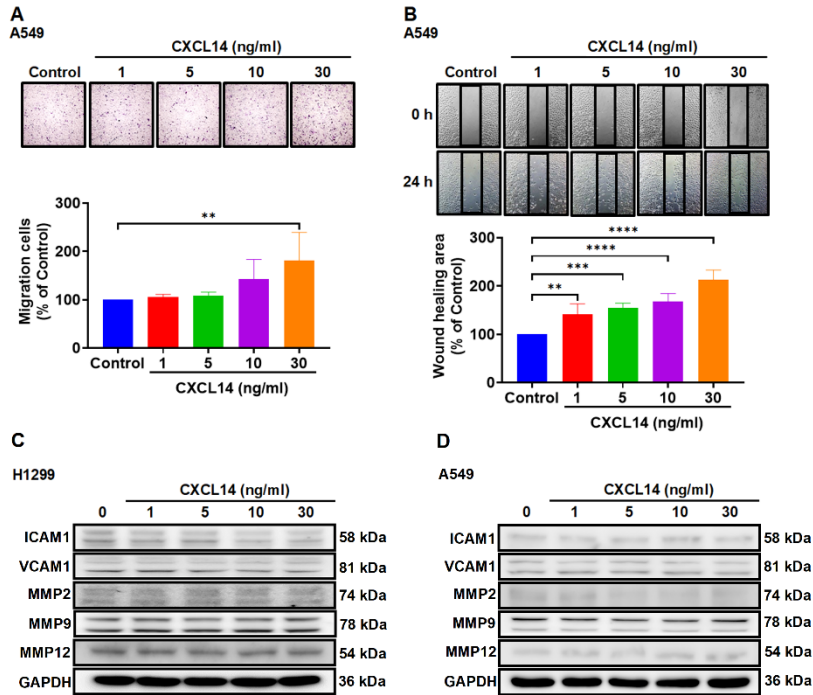


1 **Supplementary figures and legends**



2

3 **Supplementary Figure S1. CXCL14 promotes migration in lung cancer cells.** (A,
4 B) A549 cells were treated with CXCL14 (1–30 ng/ml) for 24 h, cell migration was
5 measured with migration and wound healing assays (n = 4). (C, D) H1299 and A549
6 cells were treated with CXCL14 (1–30 ng/ml) for 24 h, the expression of adhesion
7 molecules and matrix metalloproteinases (MMPs) was examined by Western blot (n =
8 4). Untreated cells were used as controls.

9

10

11

12

13

14

15

16

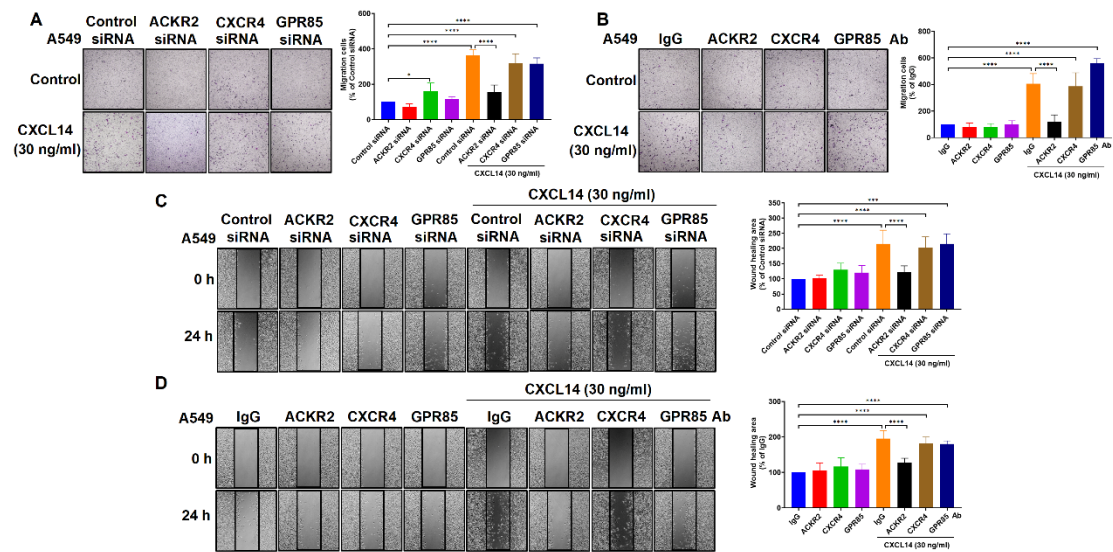
17

18

19

20

21



22

23 **Supplementary Figure S2. ACKR2 regulates migration in lung cancer.** (A, C) A549
 24 cells were transfected with nonspecific siRNA or specific ACKR2, CXCR4, GPR85
 25 siRNA for 24 h and incubated with CXCL14 (30 ng/ml) for another 24 h (n = 4). Cell
 26 migration was assessed by migration and wound healing assays. (B, D) A549 cells were
 27 incubated with ACKR2, CXCR4, GPR85 neutralized antibodies (1 μg/ml) for 1 h and
 28 then followed treatment with CXCL14 (30 ng/ml) for another 24 h (n = 4). Cell
 29 migration was assessed by migration and wound healing assays. Cells transfected with
 30 control siRNA and incubated with IgG were used as controls.

31

32

33

34

35

36

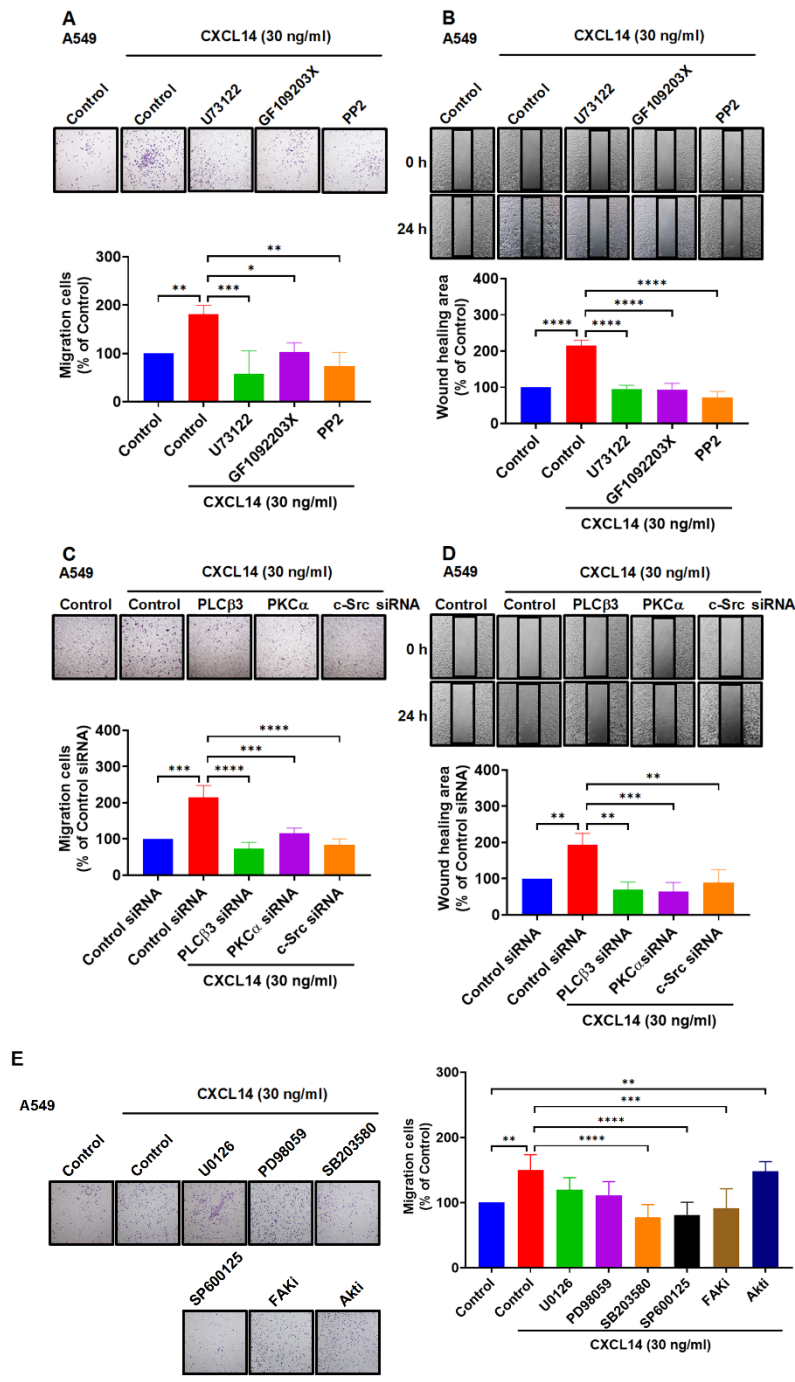
37

38

39

40

41



42

43 **Supplementary Figure S3. CXCL14 promotes cell migration via phosphorylation**
 44 **of PLCβ3, PKCα and c-Src in lung cancer cells.** (A, B) A549 cells were pretreated
 45 with U73122, GF109203X, or PP2 for 1 h and then incubated with CXCL14 (30 ng/ml)
 46 for 24 h. Cell migration was measured with migration and wound healing assays (n =
 47 4). (C, D) A549 cells were transfected with control siRNA or siRNA specific for PLCβ3,
 48 PKCα, or c-Src and then incubated with CXCL14 (30 ng/ml) for 24 h. (E) A549 cells
 49 were pretreated with U0126, PD98059, SB203580, SP600125, FAKi and Akti for 1 h
 50 and then incubated with CXCL14 (30 ng/ml) for 24 h. Cell migration was measured

51 using migration and wound healing assays (n = 4). Untreated cells and cells transfected
52 with control siRNA were used as controls.

53

54

55

56

57

58

59

60

61

62

63

64

65

66

67

68

69

70

71

72

73

74

75

76

77

78

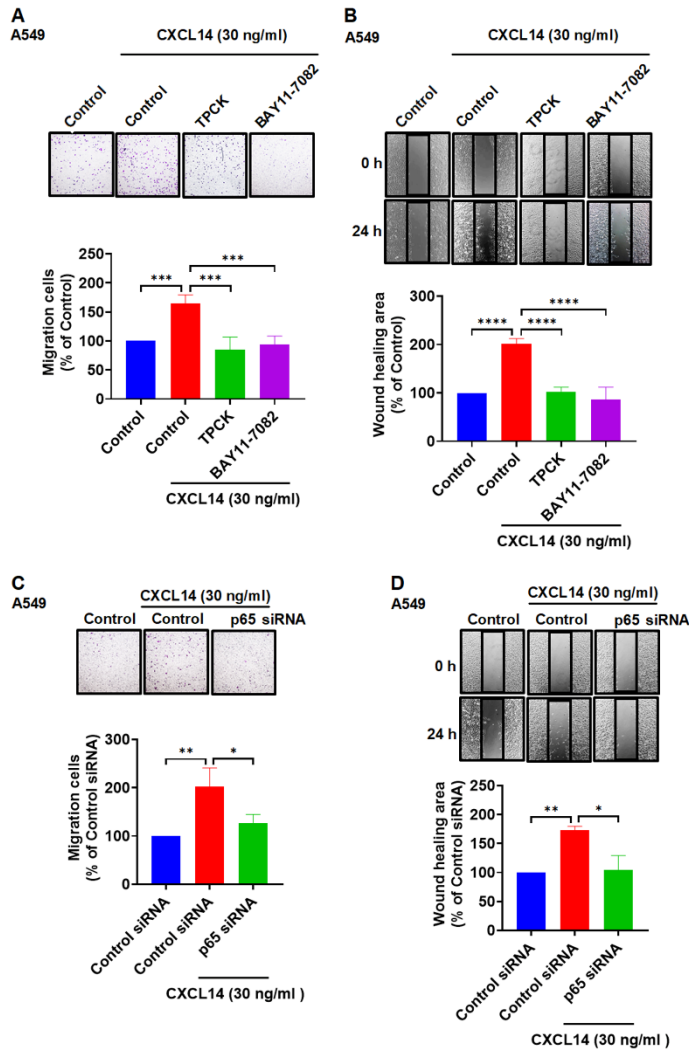
79

80

81

82

83



84

85 **Supplementary Figure S4. CXCL14 promotes cell migration through the**
 86 **phosphorylation of IKK α , I κ B α , and p65 in lung cancer cells.** (A, B) A549 cells
 87 were pretreated with TPCK (1 μ M) or BAY11-7082 (0.6 μ M) for 1 h and incubated
 88 with CXCL14 (30 ng/ml) for 24 h. Cell migration was measured through migration and
 89 wound healing assays (n = 4). (C, D) A549 cells were transfected with control siRNA
 90 or siRNA specific for p65 and treated with CXCL14 (30 ng/ml) for 24 h. Cell migration
 91 was measured through migration and wound healing assays (n = 4). Untreated cells and
 92 cells transfected with control siRNA were used as controls.

93

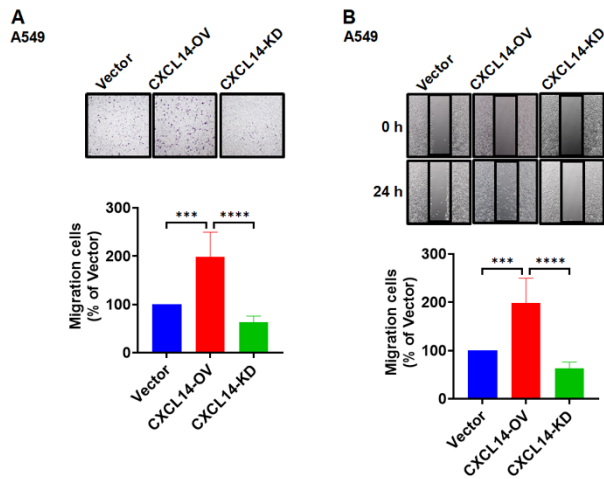
94

95

96

97

98



99

100 **Supplementary Figure S5. CXCL14 regulates migration in lung cancer cells.** (A,
 101 B) Cell migration of CXCL14-OV and CXCL14-KD A549 cells was measured with
 102 migration and wound healing assays (n = 4). Cells transfected with vector were used as
 103 controls.

104