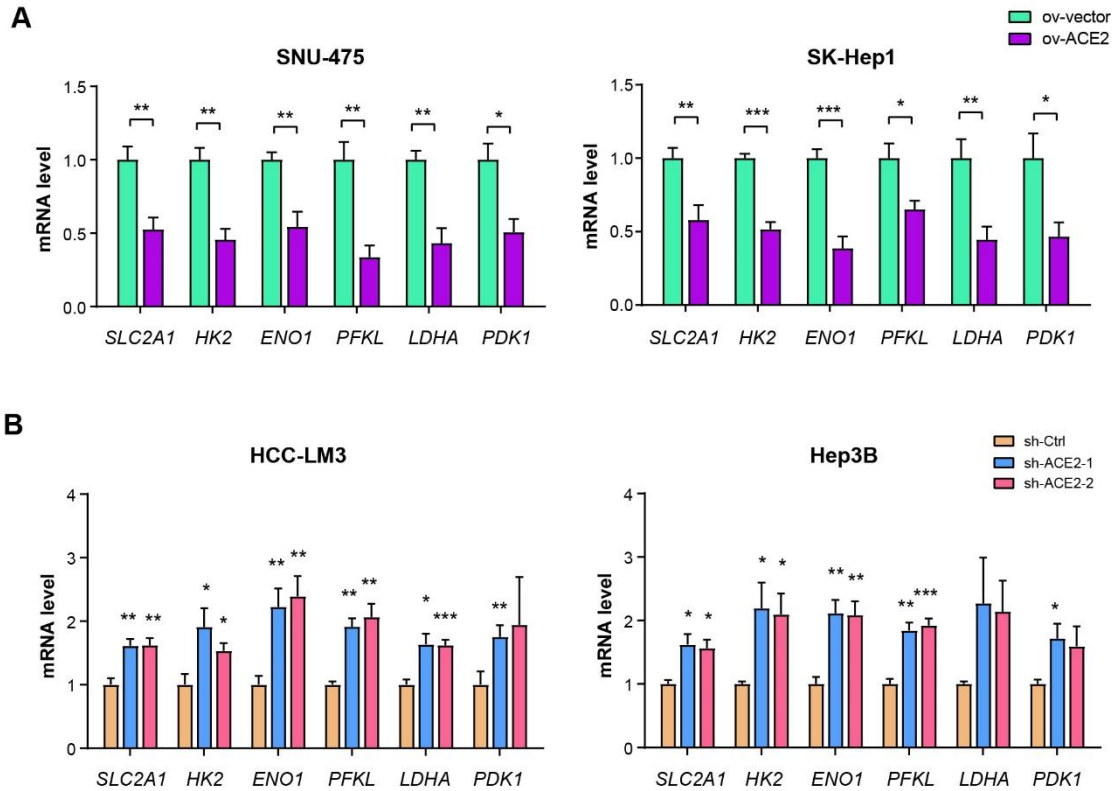


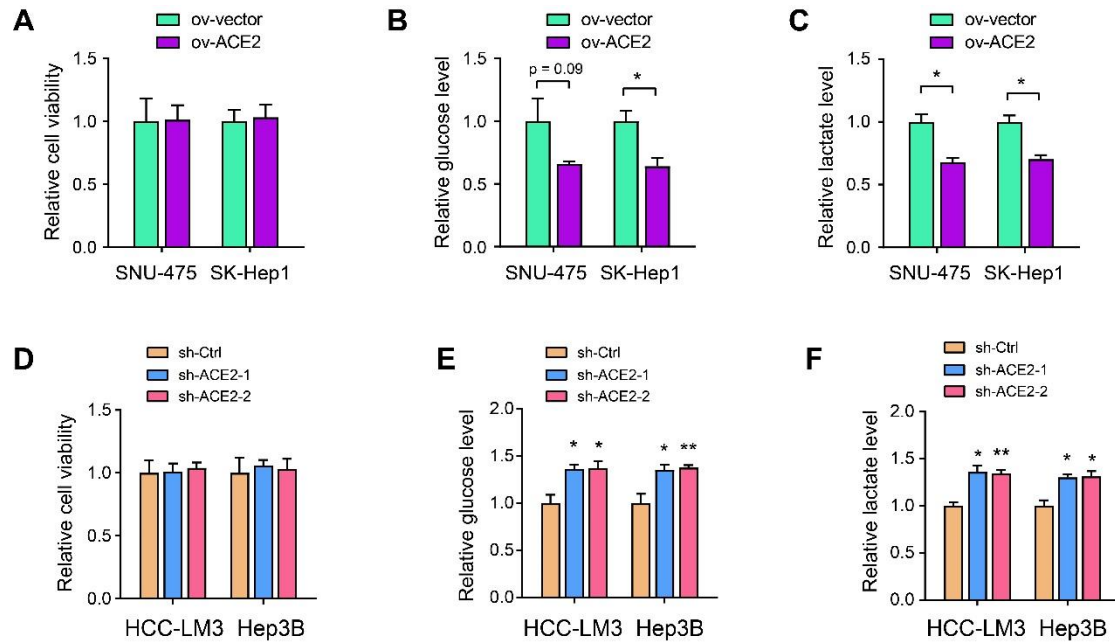
Supplementary Materials

Supplementary Figures

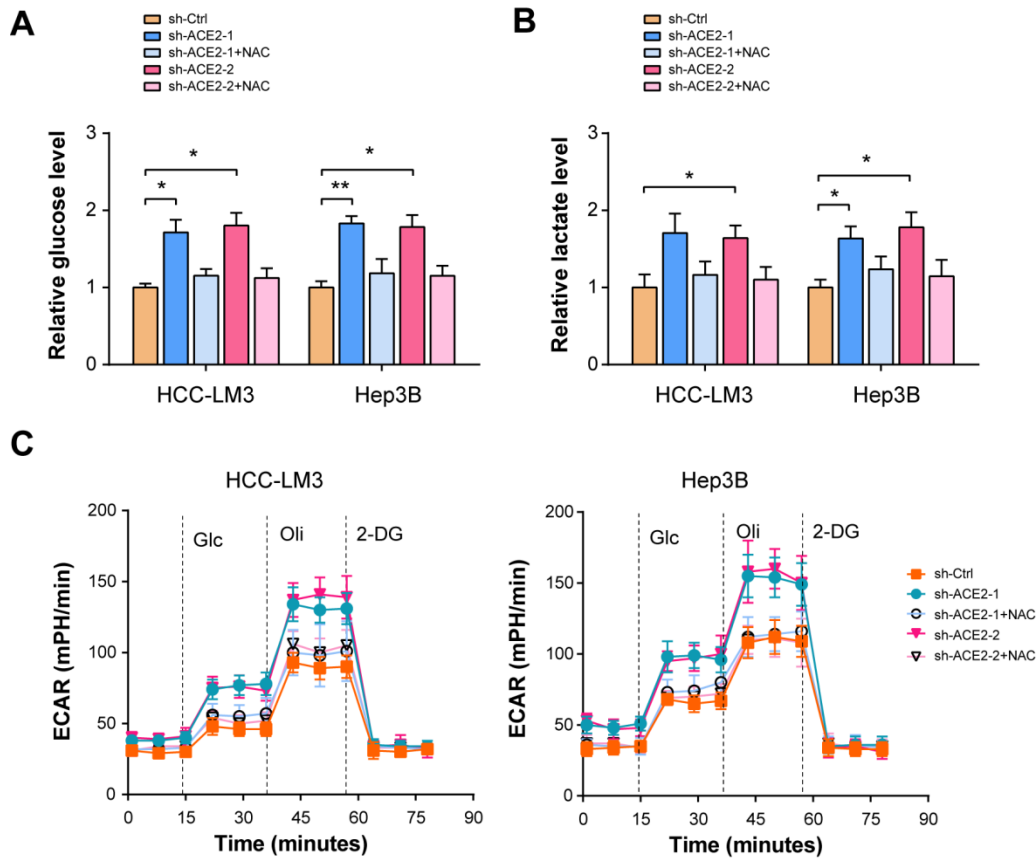


Supplementary Figure 1. Effects of ACE2 overexpression or knockdown on the expression of glycolytic components

(A) qRT-PCR analysis of glucose transporter (SLC2A1) and glycolytic genes (SLC2A1, HK2, ENO1, PFKL, LDHA, and PDK1) in the ov-vector and ov-ACE2 SUN-475 and SK-Hep1 cells (n = 3). (B) qRT-PCR analysis of glucose transporter (SLC2A1) and glycolytic genes (SLC2A1, HK2, ENO1, PFKL, LDHA, and PDK1) in the sh-Ctrl and sh-ACE2 HCC-LM3 and Hep3B cells (n = 3). *P < 0.05; **P < 0.01; ***P < 0.001.

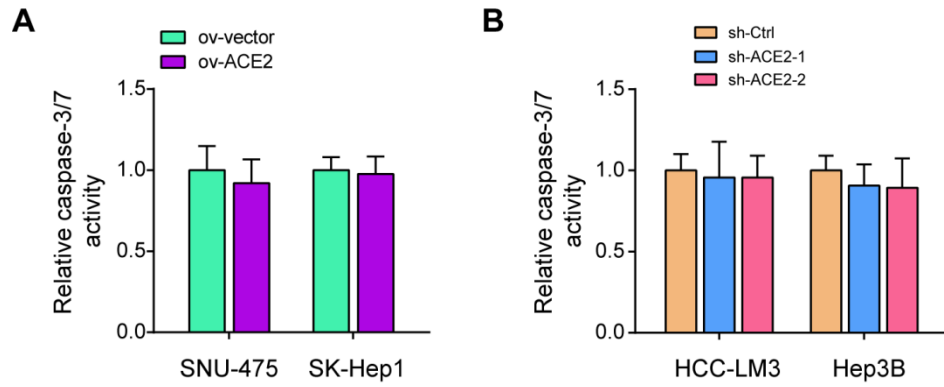


Supplementary Figure 2. ACE2 inhibits aerobic glycolysis in HCC cells. (A) CCK-8 assay showed the impacts of ACE2 overexpression on the cell proliferation of SNU-475 and SK-Hep1 cells at 12 h. (B) The influences of ACE2 overexpression on the glucose uptake in SNU-475 and SK-Hep1 cells at 12 h (n = 3). (C) The influences of ACE2 overexpression on the lactate release in SNU-475 and SK-Hep1 cells at 12 h (n = 3). (D) CCK-8 assay showed the impacts of ACE2 knockdown on the cell proliferation of HCC-LM3 and Hep3B cells at 12 h. (E) The influences of ACE2 knockdown on the glucose uptake in HCC-LM3 and Hep3B cells at 12 h (n = 3). (F) The influences of ACE2 knockdown on the lactate release in HCC-LM3 and Hep3B cells at 12 h (n = 3). *P < 0.05 and **P < 0.01.



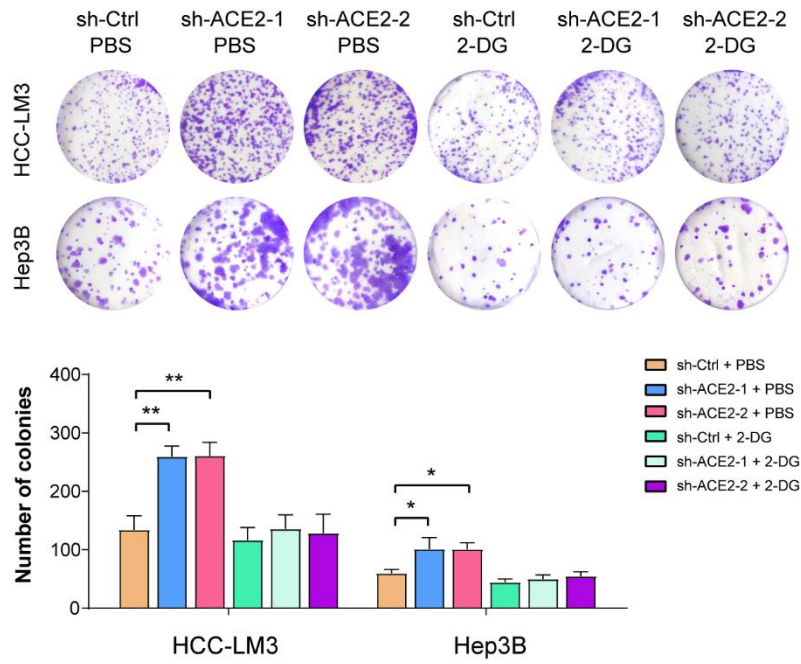
Supplementary Figure 3. NAC blocks enhanced aerobic glycolysis induced by ACE2 knockdown

(A) The effects of ACE2 knockdown on glucose uptake in the presence or absence of 1 mM N-acetyl cysteine (NAC) treatment were measured in HCC-LM3 and Hep3B cells. (B) The effects of ACE2 knockdown on lactate release in the presence or absence of 1 mM N-acetyl cysteine (NAC) treatment were measured in HCC-LM3 and Hep3B cells. (C) The effects of ACE2 knockdown on extracellular acidification rate in the presence or absence of 1 mM N-acetyl cysteine (NAC) treatment were measured in HCC-LM3 and Hep3B cells. *P < 0.05; **P < 0.01.



Supplementary Figure 4. ACE2 does not effect on HCC cell apoptosis

(A) Comparison of caspase-3/7 activity in the ov-vector and ov-ACE2 SUN-475 and SK-Hep1 cells (n = 3). (B) Comparison of caspase-3/7 activity in the sh-Ctrl and sh-ACE2 HCC-LM3 and Hep3B cells (n = 3).



Supplementary Figure 5. ACE2 knockdown-mediated growth-promoting effects are glycolysis dependent. The effects of ACE2 knockdown on *in vitro* proliferation of HCC-LM3 and Hep3B cells in the presence or absence of 2-DG treatment were measured by colony formation assay (n = 3). *P < 0.05; **P < 0.01.

Supplementary Table 1. Genes negatively associated with HCC glycolysis

Gene symbol	Pvalue	adjPvalue	log2FC	Low	High
<i>PAGE4</i>	0.000334	0.001347	-14.4252	0.22	1.00E-05
<i>LINC01985</i>	0.00021	0.000906	-13.3581	0.105	1.00E-05
<i>RGSL1</i>	7.39E-07	7.98E-06	-13.2877	0.1	1.00E-05
<i>TERB2</i>	2.39E-08	5.01E-07	-12.7731	0.07	1.00E-05
<i>SPATA46</i>	2.56E-05	0.000154	-12.2877	0.05	1.00E-05
<i>RPS4XP5</i>	3.15E-05	0.000183	-12.1357	0.045	1.00E-05
<i>GLYATL1P4</i>	0.017867	0.03897	-11.9658	0.04	1.00E-05
<i>NAV2-AS4</i>	4.08E-07	4.86E-06	-11.9658	0.04	1.00E-05
<i>JAKMIP2-AS1</i>	2.80E-05	0.000166	-11.5507	0.03	1.00E-05
<i>DNMT3L</i>	1.33E-07	1.96E-06	-5.6366	0.99501	0.02
<i>HSD17B13</i>	1.12E-06	1.11E-05	-4.3045	14.81978	0.75
<i>SPP2</i>	3.88E-19	6.74E-16	-4.0415	99.45941	6.03998
<i>LINC00844</i>	0.000131	0.000607	-3.8316	8.68489	0.61
<i>CYP2A6</i>	9.19E-07	9.50E-06	-3.6468	152.6268	12.18496
<i>UROC1</i>	3.31E-08	6.47E-07	-3.6329	7.50499	0.60499
<i>CYP3A4</i>	2.11E-08	4.49E-07	-3.5817	53.99556	4.50994
<i>CYP2E1</i>	7.45E-06	5.49E-05	-3.5733	1473.412	123.7812
<i>SLCO1B7</i>	4.70E-05	0.000256	-3.5236	0.115	0.01
<i>FAM99A</i>	7.11E-10	2.81E-08	-3.5235	2.87499	0.25001
<i>SLC10A1</i>	1.21E-10	7.31E-09	-3.4719	43.93909	3.9601
<i>AQP9</i>	1.56E-12	2.37E-10	-3.4311	108.6692	10.07505
<i>TTC36</i>	1.01E-06	1.02E-05	-3.3932	8.3524	0.795
<i>GLYAT</i>	9.15E-09	2.26E-07	-3.3499	57.96111	5.68501
<i>LINC01018</i>	1.09E-05	7.54E-05	-3.3176	6.7798	0.68001
<i>HGFAC</i>	0.000266	0.001111	-3.2597	30.83958	3.22
<i>CRYAA</i>	8.98E-07	9.36E-06	-3.1753	5.46506	0.60499
<i>RHBG</i>	7.62E-05	0.000386	-3.1712	5.85497	0.65
<i>SNTG1</i>	0.000288	0.001185	-3.1699	0.09	0.01
<i>CRYAA2</i>	5.54E-06	4.28E-05	-3.1567	8.65009	0.96997
<i>CYP7A1</i>	2.90E-09	9.06E-08	-3.1219	18.75996	2.15501
<i>RTP3</i>	9.87E-08	1.56E-06	-3.1197	21.59997	2.48501
<i>AKR1C6P</i>	9.92E-09	2.40E-07	-3.1057	1.97998	0.23001
<i>ELFN1</i>	7.42E-10	2.91E-08	-3.0372	5.49998	0.67
<i>CHRNA4</i>	0.004606	0.012444	-3.0256	1.14002	0.14
<i>GCGR</i>	4.36E-07	5.15E-06	-3.0237	12.89003	1.58501
<i>PCDH20</i>	0.000739	0.002632	-2.9542	0.155	0.02
<i>HEPACAM</i>	0.001041	0.003498	-2.8745	0.11	0.015
<i>TDGF1</i>	3.66E-08	7.04E-07	-2.8656	5.94011	0.81499
<i>CYP1A2</i>	0.000562	0.002086	-2.8509	0.505	0.07
<i>ZNF648</i>	7.07E-08	1.18E-06	-2.848	0.18	0.025
<i>IGF2-AS</i>	0.001356	0.004382	-2.8074	0.07	0.01
<i>MLIP-AS1</i>	0.000292	0.001199	-2.8074	0.07	0.01

<i>UGT1A4</i>	4.18E-06	3.37E-05	-2.7627	75.841	11.17515
<i>THRSP</i>	0.005851	0.015278	-2.7619	9.05491	1.33497
<i>CYP8B1</i>	1.55E-06	1.46E-05	-2.759	49.68596	7.33984
<i>FAM245A</i>	4.96E-07	5.76E-06	-2.7425	0.43501	0.065
<i>LINC01485</i>	3.03E-08	6.05E-07	-2.7238	96.08471	14.54506
<i>LECT2</i>	1.38E-10	7.86E-09	-2.7144	72.95069	11.11523
<i>DHRS2</i>	0.000867	0.003008	-2.6898	10.13028	1.57
<i>CD300LG</i>	2.30E-08	4.84E-07	-2.6781	0.16	0.025
<i>ADH4</i>	4.54E-09	1.30E-07	-2.6679	215.6273	33.92973
<i>SLCO1B3</i>	0.00034	0.001365	-2.6634	5.28983	0.83498
<i>SLC22A1</i>	1.75E-08	3.86E-07	-2.6497	55.255	8.80519
<i>CYP2A13</i>	2.53E-06	2.18E-05	-2.6439	0.25001	0.04
<i>GFRA1</i>	1.52E-05	1.00E-04	-2.6162	4.65992	0.76001
<i>ADH1C</i>	4.52E-06	3.60E-05	-2.6132	271.1166	44.30944
<i>HORMAD2-AS1</i>	2.49E-06	2.16E-05	-2.6127	13.64036	2.23004
<i>ADH7</i>	5.25E-05	0.000282	-2.585	0.06	0.01
<i>DRD1</i>	2.14E-09	7.06E-08	-2.585	0.06	0.01
<i>CYP2A7</i>	3.16E-05	0.000184	-2.5796	2.69	0.45001
<i>LINC02754</i>	2.73E-07	3.57E-06	-2.5663	8.44004	1.42499
<i>SEC14L3</i>	3.78E-06	3.10E-05	-2.5546	0.235	0.04
<i>CCDC196</i>	7.98E-05	0.000401	-2.5443	0.35	0.06
<i>MOGAT2</i>	2.80E-07	3.63E-06	-2.539	8.19493	1.41002
<i>CNDP1</i>	0.002424	0.007202	-2.4919	1.12502	0.2
<i>OPRPN</i>	0.000347	0.001388	-2.4894	0.365	0.065
<i>LINC01780</i>	8.43E-07	8.91E-06	-2.4854	0.7	0.125
<i>RANBP3L</i>	5.25E-09	1.47E-07	-2.4854	0.28	0.05
<i>C3orf85</i>	7.91E-05	0.000398	-2.4802	1.39498	0.25001
<i>APOC4</i>	6.71E-13	1.15E-10	-2.4592	410.7096	74.68592
<i>CYP3A7-CYP3A51P</i>	3.86E-07	4.64E-06	-2.4521	0.98501	0.18
<i>TRPM8</i>	1.26E-08	2.95E-07	-2.4519	8.18	1.49501
<i>GPLD1</i>	6.43E-11	4.41E-09	-2.441	6.4349	1.18501
<i>CYP2C8</i>	1.50E-07	2.17E-06	-2.4267	171.0021	31.80485
<i>HRG</i>	9.31E-09	2.29E-07	-2.3988	1056.79	200.3867
<i>IGF2</i>	0.000876	0.003033	-2.3917	35.37005	6.73997
<i>MTND5P1</i>	8.00E-08	1.30E-06	-2.3692	0.155	0.03
<i>RB1-DT</i>	0.000108	0.000519	-2.3656	0.33499	0.065
<i>FOLH1B</i>	7.28E-05	0.000371	-2.3374	0.93499	0.185
<i>SLC1A2</i>	3.73E-06	3.07E-05	-2.3349	3.355	0.66498
<i>SRD5A2</i>	9.38E-06	6.64E-05	-2.3274	1.30502	0.26001
<i>LINC00402</i>	1.27E-07	1.91E-06	-2.3219	0.05	0.01
<i>GYS2</i>	6.81E-09	1.79E-07	-2.3202	8.23999	1.64996
<i>CFHR4</i>	1.05E-07	1.63E-06	-2.316	17.08005	3.43003
<i>DSG1</i>	3.13E-06	2.63E-05	-2.2977	0.88499	0.18
<i>CCL16</i>	4.42E-09	1.28E-07	-2.2971	61.30919	12.47472

<i>ASPDH</i>	3.72E-11	2.83E-09	-2.2769	42.67085	8.80481
<i>LINC01093</i>	0.000474	0.00181	-2.2713	0.69999	0.145
<i>LINC02037</i>	2.31E-08	4.86E-07	-2.2701	0.82	0.17
<i>FMO3</i>	2.71E-14	9.42E-12	-2.2695	191.6721	39.7539
<i>MTND4P20</i>	1.06E-06	1.07E-05	-2.2517	7.21501	1.515
<i>TTR</i>	5.96E-10	2.44E-08	-2.2505	2464.078	517.8323
<i>ACADL</i>	7.48E-05	0.00038	-2.25	3.52009	0.73999
<i>GLYATL1</i>	7.32E-11	4.83E-09	-2.2483	58.27476	12.26516
<i>RTL9</i>	0.000632	0.00231	-2.2479	0.095	0.02
<i>PGLYRP2</i>	5.51E-10	2.29E-08	-2.2478	67.18328	14.14504
<i>RDH16</i>	1.15E-08	2.74E-07	-2.2429	47.62015	10.06003
<i>IGSF23</i>	1.18E-08	2.80E-07	-2.2375	10.96483	2.32505
<i>FABP4</i>	6.70E-09	1.77E-07	-2.2241	11.0498	2.36505
<i>CD5L</i>	0.000307	0.001255	-2.2146	1.23001	0.265
<i>NOTUM</i>	1.35E-05	9.06E-05	-2.214	5.15012	1.11
<i>FAM99B</i>	1.58E-06	1.47E-05	-2.2016	0.345	0.075
<i>UGT1A2P</i>	1.35E-05	9.05E-05	-2.195	0.435	0.095
<i>FNDC5</i>	3.61E-06	2.98E-05	-2.1782	5.68004	1.25502
<i>DEFB132</i>	0.001034	0.003483	-2.1699	0.135	0.03
<i>LCN6</i>	3.00E-05	0.000176	-2.1699	0.09	0.02
<i>LINC01344</i>	1.08E-10	6.69E-09	-2.1699	0.045	0.01
<i>PRR18</i>	1.92E-10	9.98E-09	-2.1654	1.57	0.34999
<i>GNMT</i>	1.94E-09	6.47E-08	-2.1653	43.55588	9.70989
<i>UPB1</i>	2.05E-15	1.35E-12	-2.1653	90.20942	20.11033
<i>LINC02499</i>	3.93E-11	2.97E-09	-2.1632	9.02516	2.015
<i>SLC22A7</i>	1.01E-07	1.59E-06	-2.1607	105.8603	23.67521
<i>DNMT3L-AS1</i>	8.01E-06	5.84E-05	-2.1565	0.535	0.12
<i>AFM</i>	6.44E-13	1.12E-10	-2.152	74.80378	16.83033
<i>LGR5</i>	0.017986	0.039179	-2.1468	0.46499	0.105
<i>SLC25A47</i>	1.07E-05	7.40E-05	-2.1167	19.04002	4.39003
<i>CYP1A1</i>	0.008463	0.020885	-2.1155	1.49497	0.34499
<i>SLC2A2</i>	8.99E-17	8.18E-14	-2.0722	146.6609	34.87541
<i>CFHR5</i>	5.55E-06	4.29E-05	-2.0712	30.29915	7.21011
<i>CYP2C9</i>	1.27E-09	4.59E-08	-2.0581	237.8538	57.11683
<i>ABCB11</i>	2.77E-06	2.37E-05	-2.0495	3.70505	0.89499
<i>LINC02708</i>	4.70E-05	0.000256	-2.0473	0.61999	0.15
<i>CYP4F2</i>	4.32E-09	1.25E-07	-2.0444	42.26048	10.24505
<i>SLC27A5</i>	1.89E-11	1.71E-09	-2.0416	291.5967	70.82622
<i>TAT</i>	7.45E-05	0.000379	-2.0346	110.7852	27.0395
<i>ADH1B</i>	2.60E-07	3.43E-06	-2.0312	416.7446	101.9575
<i>SLC39A5</i>	8.42E-06	6.08E-05	-2.0289	76.98921	18.86504
<i>LINC01549</i>	3.74E-06	3.08E-05	-2.0286	0.51	0.125
<i>HPD</i>	0.003139	0.008959	-2.0211	563.5421	138.8418
<i>RIPPLY1</i>	5.27E-05	0.000283	-2.0148	1.47502	0.365

<i>HNF4A-AS1</i>	8.43E-06	6.08E-05	-2.009	5.61495	1.39497
<i>AKR1D1</i>	1.74E-08	3.84E-07	-2.0089	14.65028	3.63992
<i>CFAP57</i>	3.06E-05	0.000179	-2	0.48	0.12
<i>DSCAS</i>	0.022965	0.048176	-2	0.06	0.015
<i>PACRG-AS1</i>	0.002307	0.006914	-2	0.02	0.005
<i>PRAMENP</i>	9.04E-05	0.000445	-2	0.04	0.01
<i>SLIT3-AS2</i>	1.87E-07	2.61E-06	-2	0.04	0.01
<i>CFHR3</i>	4.77E-06	3.76E-05	-1.9937	46.97493	11.79513
<i>FETUB</i>	1.51E-05	9.98E-05	-1.9707	39.23503	10.01007
<i>ACSM2A</i>	2.88E-10	1.38E-08	-1.9696	113.2124	28.90526
<i>TPRG1-AS1</i>	5.23E-07	6.03E-06	-1.9619	3.17496	0.815
<i>TMSB4Y</i>	0.008946	0.021882	-1.9615	0.37	0.095
<i>HORMAD2</i>	3.82E-05	0.000215	-1.9541	0.30999	0.08
<i>REN</i>	3.44E-07	4.25E-06	-1.9526	0.59998	0.155
<i>IL27</i>	6.12E-09	1.65E-07	-1.9477	4.33992	1.125
<i>FGF21</i>	0.021577	0.045703	-1.9438	25.31452	6.58
<i>BCHE</i>	5.25E-08	9.34E-07	-1.942	22.76532	5.92491
<i>ACSM5</i>	2.03E-06	1.83E-05	-1.9407	33.13035	8.63012
<i>F9</i>	5.59E-06	4.31E-05	-1.9288	41.50049	10.90009
<i>LINC00570</i>	2.47E-06	2.15E-05	-1.926	0.095	0.025
<i>ADH1A</i>	2.17E-10	1.10E-08	-1.9224	353.1539	93.17045
<i>ANO1</i>	4.70E-07	5.49E-06	-1.9159	13.49024	3.57497
<i>DNMBP-AS1</i>	2.51E-05	0.000152	-1.9085	1.14499	0.305
<i>MBL2</i>	2.46E-06	2.14E-05	-1.8874	15.09502	4.07996
<i>SSTR1</i>	0.001886	0.005812	-1.8779	2.09495	0.57001
<i>UGT2B27P</i>	2.32E-06	2.05E-05	-1.8768	1.06501	0.28999
<i>NR1I3</i>	1.19E-09	4.34E-08	-1.8747	71.01412	19.36489
<i>DAO</i>	3.94E-10	1.78E-08	-1.8473	28.84022	8.01492
<i>CYP4A22</i>	1.14E-11	1.16E-09	-1.8371	30.6551	8.58009
<i>TCP10L</i>	0.002974	0.008555	-1.8357	5.01498	1.40499
<i>ESR1</i>	6.93E-07	7.58E-06	-1.826	0.585	0.165
<i>CYP3A7</i>	0.000164	0.000733	-1.8176	25.41477	7.2102
<i>CUX2</i>	1.34E-07	1.97E-06	-1.8148	3.87008	1.10003
<i>ADORA2BP1</i>	0.004791	0.012869	-1.8129	0.64999	0.185
<i>ERLNC1</i>	0.000157	0.000708	-1.8074	0.07	0.02
<i>GDPD4</i>	6.79E-06	5.08E-05	-1.8074	0.21	0.06
<i>LINC00885</i>	0.002854	0.008271	-1.8074	0.07	0.02
<i>NACAP8</i>	0.005037	0.013459	-1.8074	0.07	0.02
<i>TRAPPC13P1</i>	0.003389	0.009573	-1.8074	0.07	0.02
<i>PLIN1</i>	2.05E-07	2.80E-06	-1.8038	3.05492	0.87499
<i>HAO2</i>	0.001031	0.003472	-1.8004	10.30992	2.95994
<i>SLC6A1</i>	2.80E-12	3.80E-10	-1.79	31.20932	9.02496
<i>IGFALS</i>	0.00021	0.000906	-1.7839	5.78494	1.67998
<i>ABCA8</i>	2.18E-05	0.000135	-1.7604	3.92994	1.15999

<i>AZGP1P2</i>	3.92E-06	3.20E-05	-1.7549	0.405	0.12
<i>LINC02362</i>	3.43E-07	4.25E-06	-1.7549	4.05008	1.20001
<i>PDK4</i>	3.43E-07	4.25E-06	-1.7475	29.93495	8.91525
<i>PCP4L1</i>	0.018681	0.040435	-1.7386	1.43501	0.43001
<i>LRRC3-DT</i>	4.41E-05	0.000243	-1.737	0.1	0.03
<i>QRFR</i>	0.000233	0.000991	-1.737	0.05	0.015
<i>CYP3A43</i>	4.62E-07	5.41E-06	-1.7346	1.01498	0.305
<i>ELOVL2-AS1</i>	6.01E-07	6.75E-06	-1.7308	0.78	0.235
<i>SERPINA4</i>	1.19E-16	1.03E-13	-1.7307	140.0709	42.20442
<i>PCK1</i>	0.000321	0.001306	-1.7287	107.4647	32.42496
<i>CES3</i>	1.34E-10	7.69E-09	-1.7241	10.76985	3.25997
<i>TMPRSS6</i>	1.04E-12	1.68E-10	-1.7151	72.54408	22.09537
<i>SERPINC1</i>	1.39E-14	5.77E-12	-1.7144	1933.578	589.2064
<i>RNU1-70P</i>	2.02E-12	2.94E-10	-1.7138	95.37046	29.07451
<i>CHCHD4P3</i>	3.09E-07	3.94E-06	-1.7137	0.41	0.125
<i>IYD</i>	5.70E-10	2.36E-08	-1.7055	3.17996	0.97502
<i>SEC14L2</i>	2.76E-10	1.33E-08	-1.701	63.7728	19.61492
<i>CYP4A11</i>	2.00E-09	6.66E-08	-1.6968	138.6661	42.77417
<i>ETNK2</i>	9.15E-08	1.45E-06	-1.6954	58.73495	18.13547
<i>RALGPS2-AS1</i>	1.51E-11	1.45E-09	-1.6933	0.75999	0.235
<i>AOC4P</i>	3.75E-08	7.16E-07	-1.6917	5.95999	1.84499
<i>EHHADH</i>	3.02E-11	2.46E-09	-1.6882	58.81172	18.24978
<i>ACSM2B</i>	7.36E-10	2.90E-08	-1.6838	232.4446	72.34886
<i>HSD17B6</i>	9.08E-09	2.25E-07	-1.6833	307.5209	95.75101
<i>CTD-3080P12.3</i>	8.59E-05	0.000426	-1.6829	0.61	0.18999
<i>TPPP2</i>	7.67E-10	2.99E-08	-1.6812	0.92999	0.29
<i>NAT2</i>	0.008428	0.020823	-1.6794	3.07493	0.96
<i>UGT2B10</i>	1.45E-06	1.38E-05	-1.6792	80.99224	25.28994
<i>PLGLA</i>	2.89E-06	2.45E-05	-1.6682	5.08495	1.59999
<i>PKLR</i>	1.10E-10	6.76E-09	-1.6646	52.56125	16.57991
<i>TDO2</i>	0.011	0.025942	-1.6638	86.64262	27.34433
<i>TENM2</i>	0.000821	0.002867	-1.663	0.19	0.06
<i>A1BG</i>	3.95E-12	4.93E-10	-1.6625	1195.156	377.5333
<i>THBS4</i>	0.00138	0.004447	-1.6599	4.645	1.47
<i>TTPA</i>	6.33E-08	1.08E-06	-1.6574	18.07501	5.72987
<i>FAM169A</i>	9.30E-06	6.59E-05	-1.6548	0.73999	0.235
<i>GREB1</i>	2.22E-05	0.000137	-1.6547	2.33	0.74
<i>CCND2P1</i>	0.00035	0.001399	-1.6527	4.68487	1.49001
<i>CCL25</i>	0.000893	0.003077	-1.6521	0.99003	0.315
<i>HLF</i>	3.30E-09	9.98E-08	-1.6505	16.21497	5.16507
<i>SLC13A5</i>	2.01E-08	4.33E-07	-1.6481	72.87298	23.25021
<i>HPR</i>	9.93E-07	1.01E-05	-1.6447	241.3262	77.1814
<i>CYP26A1</i>	0.000114	0.000539	-1.6439	0.375	0.12
<i>NUGGC</i>	7.53E-07	8.08E-06	-1.6378	2.22497	0.715

<i>CYP27A1</i>	1.30E-14	5.77E-12	-1.634	264.1045	85.0951
<i>ZNF385B</i>	3.73E-06	3.07E-05	-1.6338	2.85494	0.91999
<i>SLC22A25</i>	7.07E-07	7.70E-06	-1.6329	2.44998	0.78997
<i>ZG16</i>	6.01E-06	4.58E-05	-1.6314	1.58003	0.51
<i>HCG14</i>	7.05E-06	5.25E-05	-1.628	0.17	0.055
<i>ABCA9</i>	1.69E-11	1.59E-09	-1.6215	0.80001	0.26
<i>PFKFB1</i>	8.47E-06	6.11E-05	-1.6155	6.68	2.18001
<i>ABAT</i>	1.55E-08	3.49E-07	-1.6154	59.4718	19.40999
<i>LINC01702</i>	0.001545	0.004904	-1.6122	5.35012	1.74999
<i>LAMA5-AS1</i>	0.010374	0.0247	-1.6097	5.28004	1.73004
<i>LINC01595</i>	4.49E-05	0.000246	-1.6052	1.08003	0.355
<i>HAPLN4</i>	1.98E-06	1.79E-05	-1.6041	0.38	0.125
<i>SLC17A4</i>	1.96E-10	1.01E-08	-1.6013	15.10974	4.97989
<i>TRIM80P</i>	1.19E-09	4.35E-08	-1.5999	0.485	0.16
<i>PIPOX</i>	1.05E-13	2.75E-11	-1.5939	146.931	48.67492
<i>HS1BP3-IT1</i>	1.37E-07	2.01E-06	-1.5919	3.13498	1.04
<i>GLS2</i>	0.018411	0.039934	-1.5876	8.50522	2.82999
<i>G6PC1</i>	3.25E-09	9.88E-08	-1.5871	134.1487	44.6509
<i>FXVD1</i>	7.36E-05	0.000375	-1.586	86.55398	28.83028
<i>AOX2P</i>	0.010549	0.025048	-1.585	0.03	0.01
<i>CCDC187</i>	0.005139	0.013679	-1.585	0.15	0.05
<i>CHN2-AS1</i>	0.000442	0.001706	-1.585	0.135	0.045
<i>COL25A1</i>	3.85E-05	0.000217	-1.585	0.03	0.01
<i>HSD3B2</i>	0.00165	0.005189	-1.585	0.06	0.02
<i>JAKMIP2</i>	3.22E-06	2.70E-05	-1.585	0.36001	0.12
<i>LINC01744</i>	0.016249	0.035962	-1.585	0.03	0.01
<i>LINGO4</i>	1.64E-06	1.52E-05	-1.585	0.24	0.08
<i>LIPJ</i>	3.36E-05	0.000193	-1.585	0.03	0.01
<i>RPL7P60</i>	0.013849	0.031465	-1.585	0.09	0.03
<i>VWA8-AS1</i>	2.08E-06	1.86E-05	-1.585	0.03	0.01
<i>ZFHX4-AS1</i>	0.001168	0.003863	-1.585	0.09	0.03
<i>OTC</i>	2.96E-08	5.94E-07	-1.5816	56.98601	19.04017
<i>CYP2B6</i>	4.57E-08	8.35E-07	-1.5706	16.46987	5.54499
<i>NECAB2</i>	0.007307	0.0185	-1.5704	5.91006	1.98997
<i>ACOT12</i>	2.07E-08	4.44E-07	-1.5638	16.96954	5.73995
<i>BTNL9</i>	3.60E-10	1.65E-08	-1.5634	2.33494	0.79001
<i>IFNLR1</i>	1.40E-10	7.95E-09	-1.5556	2.19	0.745
<i>MYCL</i>	2.75E-12	3.78E-10	-1.5527	6.86487	2.33999
<i>ALDH1L1</i>	0.000258	0.001081	-1.5495	113.4699	38.76434
<i>GATM</i>	1.22E-13	3.14E-11	-1.5454	389.3972	133.4069
<i>GBP7</i>	0.002643	0.007751	-1.545	6.58	2.25501
<i>CHAD</i>	1.38E-13	3.38E-11	-1.5392	11.30512	3.88994
<i>NLRP6</i>	0.000256	0.001073	-1.5377	0.45	0.155
<i>FCN2</i>	0.000456	0.001754	-1.5361	0.29	0.1

<i>SLC2A12</i>	0.000934	0.003197	-1.5318	1.19997	0.415
<i>C9orf152</i>	0.0032	0.009108	-1.5306	0.39001	0.135
<i>AOX3P</i>	0.00129	0.004194	-1.5236	0.115	0.04
<i>APOA1</i>	4.26E-08	7.88E-07	-1.5232	7312.626	2544.151
<i>SIGLEC15</i>	0.008951	0.02189	-1.522	0.56	0.195
<i>DNASE1L3</i>	8.16E-09	2.07E-07	-1.5143	10.06993	3.52503
<i>CYP3A5</i>	4.58E-10	1.99E-08	-1.5112	141.6405	49.69027
<i>RORC</i>	2.43E-14	8.95E-12	-1.5064	48.78081	17.16995
<i>DIO1</i>	0.002561	0.007547	-1.506	57.16042	20.12504
<i>GSTA1</i>	0.000262	0.001097	-1.5059	766.0888	269.753
<i>BHMT</i>	6.40E-05	0.000334	-1.504	63.4904	22.38473
<i>HSD11B1</i>	0.003327	0.009415	-1.5013	70.50115	24.90422
<i>LINC01127</i>	2.31E-09	7.51E-08	-1.5009	1.50001	0.53
<i>ACSL6</i>	0.000201	0.000872	-1.4963	1.73498	0.615
<i>AMD1P4</i>	0.010784	0.025505	-1.4854	0.07	0.025
<i>RPL17P11</i>	0.005742	0.015019	-1.4854	0.14	0.05
<i>RPL7AP15</i>	7.94E-05	0.000399	-1.4854	0.07	0.025
<i>CYP2D6</i>	5.97E-06	4.55E-05	-1.4834	194.2468	69.46977
<i>PRODH2</i>	6.43E-09	1.71E-07	-1.4823	65.60431	23.48041
<i>PCK2</i>	1.31E-11	1.28E-09	-1.482	181.076	64.82441
<i>SLC13A2</i>	0.003076	0.008806	-1.4806	0.60001	0.215
<i>CTNNA3</i>	1.41E-05	9.38E-05	-1.478	0.195	0.07
<i>F12</i>	4.38E-13	8.21E-11	-1.4772	238.1584	85.54035
<i>FCAMR</i>	0.006771	0.017354	-1.4754	0.57001	0.205
<i>ENPP3</i>	0.01301	0.029922	-1.4739	0.75	0.27
<i>TREH</i>	0.000547	0.002043	-1.4695	0.89999	0.32499
<i>CPED1</i>	0.000116	0.000548	-1.4655	2.95494	1.07003
<i>APOM</i>	2.69E-08	5.53E-07	-1.4649	354.3914	128.384
<i>CLEC3B</i>	3.31E-08	6.47E-07	-1.4638	15.57027	5.64494
<i>INHBC</i>	6.31E-07	7.00E-06	-1.4631	21.56003	7.81994
<i>LINC02637</i>	5.09E-10	2.16E-08	-1.4626	3.95497	1.43497
<i>GABBR2</i>	0.023149	0.048519	-1.4594	0.055	0.02
<i>GNAT1</i>	0.000531	0.001993	-1.4594	0.165	0.06
<i>LINC00222</i>	0.001702	0.005323	-1.4594	0.11	0.04
<i>OMD</i>	0.008655	0.021291	-1.4594	0.055	0.02
<i>SPDYC</i>	8.20E-09	2.08E-07	-1.4552	0.84998	0.31
<i>ARID3C</i>	1.06E-08	2.53E-07	-1.4484	0.65499	0.24
<i>SLC6A13</i>	7.11E-05	0.000364	-1.4388	2.85999	1.055
<i>SHBG</i>	0.000158	0.00071	-1.4373	14.05491	5.18996
<i>HEPN1</i>	0.001214	0.003993	-1.433	0.135	0.05
<i>CCDC170</i>	5.43E-06	4.21E-05	-1.4289	0.87498	0.32499
<i>NADK2-AS1</i>	0.000178	0.000786	-1.4288	0.175	0.065
<i>SLC6A12</i>	3.36E-07	4.18E-06	-1.4282	18.29979	6.79991
<i>CDO1</i>	2.85E-13	6.18E-11	-1.4278	106.9792	39.76383

<i>SHD</i>	7.49E-06	5.51E-05	-1.4251	7.46518	2.78001
<i>SLC16A11</i>	6.80E-06	5.08E-05	-1.4242	9.5	3.54005
<i>CCL14</i>	2.01E-08	4.33E-07	-1.4228	9.62525	3.59004
<i>GPER1</i>	5.82E-09	1.59E-07	-1.422	8.6149	3.215
<i>ADRB2</i>	3.08E-08	6.14E-07	-1.4203	1.365	0.51001
<i>ADH6</i>	5.53E-13	9.89E-11	-1.4194	73.34314	27.41972
<i>CALML3-AS1</i>	2.85E-06	2.42E-05	-1.415	0.08	0.03
<i>BANF1P2</i>	4.37E-10	1.91E-08	-1.4139	2.105	0.79001
<i>KCNJ8</i>	5.86E-08	1.01E-06	-1.4108	14.53006	5.46497
<i>DCXR</i>	2.45E-07	3.26E-06	-1.4103	660.3705	248.456
<i>PHYHD1</i>	0.012572	0.029067	-1.4102	17.27515	6.49996
<i>APOF</i>	7.40E-06	5.46E-05	-1.4094	16.92005	6.36997
<i>CTXND1</i>	1.89E-07	2.63E-06	-1.4027	3.11994	1.18
<i>DCXR-DT</i>	0.000205	0.000889	-1.402	4.76988	1.805
<i>FTCD</i>	2.15E-11	1.89E-09	-1.4015	224.4397	84.95954
<i>BDH1</i>	3.72E-13	7.48E-11	-1.3966	127.1009	48.2756
<i>KNG1</i>	1.62E-11	1.53E-09	-1.3916	1262.398	481.1416
<i>SLC22A10</i>	5.66E-06	4.36E-05	-1.3911	6.25511	2.38498
<i>SLC38A4</i>	1.96E-07	2.71E-06	-1.3895	61.89182	23.62449
<i>LINC02259</i>	6.93E-07	7.58E-06	-1.387	0.33999	0.13
<i>KRTAP5-6</i>	5.56E-08	9.71E-07	-1.3857	0.405	0.155
<i>CSAD</i>	7.59E-14	2.12E-11	-1.3848	22.34017	8.55483
<i>SLC13A3</i>	0.006922	0.017678	-1.3804	6.0398	2.32001
<i>GPAM</i>	2.96E-10	1.41E-08	-1.3781	35.96099	13.83521
<i>TUSC8</i>	2.34E-07	3.15E-06	-1.3769	2.80501	1.08003
<i>C7</i>	0.00502	0.013418	-1.3651	8.56491	3.32497
<i>AHSG</i>	2.45E-07	3.26E-06	-1.3607	1677.168	653.1004
<i>PPP1R1A</i>	0.000963	0.003276	-1.3557	59.1796	23.12448
<i>LINC02675</i>	3.13E-05	0.000182	-1.3508	1.13501	0.44501
<i>CLDN14</i>	5.06E-09	1.42E-07	-1.3494	13.78509	5.41003
<i>LRRC3</i>	1.32E-07	1.95E-06	-1.3492	4.00001	1.57003
<i>LINC02029</i>	0.002209	0.006654	-1.3479	0.27999	0.11
<i>SERPINF2</i>	2.24E-11	1.94E-09	-1.3448	525.0417	206.7072
<i>EXOC3L4</i>	3.24E-07	4.06E-06	-1.3326	24.27988	9.6402
<i>AADAC</i>	3.97E-10	1.78E-08	-1.3291	155.1835	61.76375
<i>CYP4F3</i>	9.36E-08	1.48E-06	-1.3289	43.04636	17.13502
<i>LPA</i>	2.89E-08	5.83E-07	-1.3264	1.60499	0.63999
<i>SORD</i>	3.50E-09	1.05E-07	-1.3258	95.58995	38.13424
<i>HJV</i>	1.16E-07	1.76E-06	-1.3241	122.6978	49.00448
<i>CA4</i>	0.000214	0.000922	-1.322	0.40001	0.16
<i>ADRA1A</i>	0.000555	0.002067	-1.3219	0.72498	0.29
<i>CPS1-IT1</i>	0.002927	0.00844	-1.3219	0.05	0.02
<i>HMGB3P10</i>	0.00011	0.000525	-1.3219	0.1	0.04
<i>LARGE1-AS1</i>	0.000347	0.001389	-1.3219	0.25	0.1

<i>LYPLAL1-DT</i>	0.003224	0.009165	-1.3219	0.075	0.03
<i>ITIH1</i>	3.45E-12	4.45E-10	-1.3179	877.9518	352.1623
<i>HOMER2</i>	8.15E-07	8.62E-06	-1.3159	23.41502	9.40495
<i>SAA4</i>	4.18E-06	3.37E-05	-1.3142	232.2195	93.38474
<i>SLC27A2</i>	8.50E-07	8.96E-06	-1.3132	54.54537	21.94992
<i>SHLD2P3</i>	3.72E-10	1.69E-08	-1.3093	0.57	0.23001
<i>SERPINA11</i>	0.000168	0.000751	-1.3087	63.30451	25.55518
<i>FMO4</i>	1.52E-08	3.42E-07	-1.3084	11.37985	4.59497
<i>GMNC</i>	0.005712	0.014955	-1.2996	0.48	0.195
<i>NCMAP-DT</i>	4.61E-05	0.000252	-1.2996	0.16	0.065
<i>ATF7IP2</i>	6.29E-06	4.75E-05	-1.2885	26.1747	10.71518
<i>APOH</i>	2.71E-14	9.42E-12	-1.2881	4204.626	1721.806
<i>WNK3</i>	1.94E-07	2.69E-06	-1.288	1.05003	0.43001
<i>DBH</i>	3.80E-08	7.23E-07	-1.2872	0.71998	0.295
<i>ABCC9</i>	0.000246	0.001036	-1.2867	2.52506	1.035
<i>AR</i>	1.66E-07	2.37E-06	-1.2848	5.94492	2.43998
<i>ABCB4</i>	1.55E-06	1.46E-05	-1.2842	52.98358	21.75538
<i>CA14</i>	0.000499	0.001893	-1.2831	2.385	0.98002
<i>EVPLL</i>	0.013197	0.030259	-1.2801	0.255	0.105
<i>LINC00933</i>	1.72E-05	0.00011	-1.2801	0.17	0.07
<i>EPHX2</i>	3.12E-12	4.16E-10	-1.2788	56.72957	23.38043
<i>SLCO1B1</i>	6.04E-07	6.76E-06	-1.2782	43.81502	18.06512
<i>DPYS</i>	2.54E-07	3.37E-06	-1.2768	168.7864	69.66126
<i>LINC02028</i>	2.24E-07	3.03E-06	-1.2761	1.55	0.64
<i>PANK1</i>	7.28E-14	2.08E-11	-1.2759	17.12008	7.07018
<i>EPHA1</i>	0.000571	0.002111	-1.2757	16.64502	6.87491
<i>DBH-AS1</i>	4.15E-10	1.85E-08	-1.2752	5.98996	2.47494
<i>UGT2B15</i>	0.001104	0.003682	-1.2745	136.3299	56.35562
<i>MGC32805</i>	6.82E-05	0.000353	-1.2727	1.65501	0.685
<i>ZBTB16</i>	0.001315	0.004264	-1.2671	3.16496	1.315
<i>FOLH1</i>	1.72E-05	0.000111	-1.2666	6.45994	2.68501
<i>CFHR2</i>	2.74E-08	5.59E-07	-1.2634	264.4474	110.1559
<i>ABCA6</i>	3.53E-09	1.05E-07	-1.2602	20.18025	8.42501
<i>STPG3</i>	2.15E-06	1.92E-05	-1.2591	0.73001	0.305
<i>CNGA1</i>	6.95E-05	0.000358	-1.2586	3.90009	1.63003
<i>TKFC</i>	6.81E-09	1.79E-07	-1.2581	106.685	44.60474
<i>FAXDC2</i>	4.12E-10	1.83E-08	-1.2562	30.47969	12.76021
<i>NR1I2</i>	1.20E-05	8.20E-05	-1.255	10.58513	4.43499
<i>LINC02565</i>	0.001441	0.004621	-1.2538	0.155	0.065
<i>SLC38A3</i>	1.47E-13	3.54E-11	-1.2524	219.4649	92.12034
<i>PALMD</i>	1.50E-14	6.08E-12	-1.2496	18.63024	7.835
<i>IGFBP2</i>	0.001104	0.003682	-1.246	319.7378	134.8105
<i>CRYL1</i>	3.76E-13	7.48E-11	-1.2453	108.8159	45.90091
<i>INSIG1</i>	1.05E-05	7.33E-05	-1.2453	126.7214	53.45418

<i>LINC02608</i>	0.000981	0.003325	-1.2427	3.45504	1.45999
<i>RHEBP2</i>	3.72E-08	7.13E-07	-1.2419	12.49973	5.28501
<i>ACADSB</i>	3.28E-08	6.44E-07	-1.2415	39.77053	16.81969
<i>CAT</i>	1.98E-16	1.58E-13	-1.2408	175.3077	74.18158
<i>C6</i>	0.00012	0.000561	-1.2401	57.4497	24.32061
<i>CLDN15</i>	2.40E-05	0.000146	-1.2385	31.36947	13.29511
<i>TMEM82</i>	0.006183	0.016021	-1.2377	5.53002	2.34499
<i>GLIS2-AS1</i>	0.000377	0.001489	-1.237	1.15498	0.49
<i>SERPINA5</i>	3.94E-09	1.16E-07	-1.2362	243.0239	103.1597
<i>ADORA2A-AS1</i>	3.72E-13	7.48E-11	-1.2345	11.23505	4.77489
<i>RGN</i>	5.56E-10	2.31E-08	-1.2322	123.025	52.36836
<i>CPS1</i>	0.014177	0.03209	-1.2321	236.523	100.6896
<i>LINC00671</i>	8.46E-07	8.93E-06	-1.2294	0.33999	0.145
<i>CYP2D7</i>	0.00321	0.009132	-1.2279	22.10028	9.43515
<i>LRCOL1</i>	0.000495	0.001881	-1.2247	1.04	0.445
<i>LINC01146</i>	0.000281	0.001163	-1.2245	12.24496	5.24001
<i>SLC17A2</i>	1.78E-06	1.63E-05	-1.2237	14.61994	6.25988
<i>SLC51A</i>	0.001137	0.003775	-1.2236	63.01516	26.98447
<i>DDX25</i>	0.007448	0.018816	-1.2224	0.07	0.03
<i>LINC01354</i>	0.009673	0.023321	-1.2224	0.07	0.03
<i>LINC01537</i>	1.22E-06	1.20E-05	-1.2224	0.07	0.03
<i>OGFR-AS1</i>	0.009303	0.022575	-1.2224	0.14	0.06
<i>PACRG</i>	2.05E-06	1.85E-05	-1.2224	1.15502	0.495
<i>CADM1</i>	5.77E-08	9.98E-07	-1.2206	45.38447	19.47488
<i>ALDH2</i>	1.25E-10	7.40E-09	-1.2177	498.1717	214.1904
<i>HS3ST3B1</i>	2.24E-08	4.76E-07	-1.2177	6.20996	2.67004
<i>C3P1</i>	0.001497	0.004774	-1.2169	11.18006	4.80988
<i>DMGDH</i>	1.49E-08	3.38E-07	-1.2159	26.86481	11.56504
<i>CGNL1</i>	5.60E-11	4.01E-09	-1.2106	13.46977	5.82002
<i>SORD2P</i>	7.16E-09	1.85E-07	-1.206	44.93965	19.48012
<i>STPG3-AS1</i>	1.53E-06	1.44E-05	-1.2038	0.64499	0.28
<i>F10-AS1</i>	1.66E-05	0.000108	-1.1979	0.195	0.085
<i>DHRS1</i>	4.36E-12	5.24E-10	-1.1976	55.14942	24.0446
<i>EXPH5</i>	0.00129	0.004194	-1.1926	0.31999	0.14
<i>APBA1</i>	1.33E-05	8.95E-05	-1.1896	2.39496	1.05002
<i>APOC3</i>	3.81E-08	7.24E-07	-1.1877	8552.334	3754.574
<i>EPHX1</i>	5.79E-07	6.56E-06	-1.1848	1554.472	683.8007
<i>GPIHBP1</i>	1.07E-07	1.66E-06	-1.1848	1.57996	0.69501
<i>TMEM220-AS1</i>	2.37E-12	3.31E-10	-1.1848	5.36501	2.35999
<i>ACSM5P1</i>	0.00218	0.006581	-1.1844	0.125	0.055
<i>TRMT112P4</i>	0.002403	0.007149	-1.1844	0.75	0.33
<i>ACE2</i>	2.67E-02	5.48E-02	-1.1829	0.42	0.185
<i>MYH7B</i>	7.67E-07	8.19E-06	-1.1829	0.42	0.185
<i>APOA5</i>	2.25E-05	0.000139	-1.1827	100.1689	44.12563

<i>SLC16A2</i>	1.40E-08	3.21E-07	-1.1814	14.04999	6.19506
<i>LEAP2</i>	6.29E-06	4.75E-05	-1.175	108.4434	48.02636
<i>HAO1</i>	7.44E-08	1.23E-06	-1.1733	98.94958	43.87582
<i>TMPRSS9</i>	0.003311	0.009379	-1.171	1.60999	0.715
<i>PROZ</i>	5.00E-05	0.00027	-1.1707	9.90502	4.3999
<i>ABHD12B</i>	0.000118	0.000555	-1.1699	0.18	0.08
<i>FBN3</i>	0.005761	0.01506	-1.1699	0.135	0.06
<i>GALR3</i>	0.008181	0.02033	-1.1699	0.09	0.04
<i>TMEM272</i>	0.001083	0.003619	-1.1699	0.045	0.02
<i>AZGP1P1</i>	6.68E-08	1.13E-06	-1.1687	7.25009	3.22497
<i>MTARC1</i>	5.66E-06	4.36E-05	-1.1666	34.56993	15.40015
<i>FABP1</i>	0.000381	0.001502	-1.1656	2067.023	921.4284
<i>SULT2A1</i>	1.38E-05	9.18E-05	-1.1651	203.1209	90.58082
<i>XDH</i>	5.15E-05	0.000278	-1.1643	7.38516	3.29504
<i>MPPED1</i>	2.09E-05	0.00013	-1.1633	1.63497	0.72999
<i>NCMAP</i>	0.000648	0.002359	-1.1629	1.03002	0.46001
<i>CIDEB</i>	9.19E-07	9.50E-06	-1.1619	64.10334	28.65005
<i>GOLGA8M</i>	0.000102	0.000494	-1.1616	0.42501	0.18999
<i>CASQ2</i>	8.54E-06	6.14E-05	-1.1605	0.38	0.17
<i>HMGCS2</i>	7.38E-07	7.97E-06	-1.1598	565.4103	253.0663
<i>F7</i>	1.70E-10	9.27E-09	-1.1597	69.7609	31.22556
<i>CES2</i>	2.96E-09	9.21E-08	-1.1594	166.1153	74.37069
<i>FTOP1</i>	0.00012	0.00056	-1.1585	0.62499	0.27999
<i>SCN4A</i>	4.58E-07	5.37E-06	-1.1565	0.26749	0.12
<i>SHLD2P1</i>	4.07E-13	8.02E-11	-1.155	3.48503	1.56498
<i>IAPP</i>	6.46E-05	0.000337	-1.152	0.1	0.045
<i>SEZ6</i>	0.005603	0.01473	-1.152	0.1	0.045
<i>TSPEAR-AS1</i>	0.015155	0.033885	-1.152	0.69998	0.31499
<i>SCNN1D</i>	8.09E-08	1.31E-06	-1.1516	2.25503	1.01503
<i>CD14</i>	5.55E-08	9.70E-07	-1.1504	187.428	84.43874
<i>HPX</i>	3.42E-08	6.64E-07	-1.1486	1185.562	534.7481
<i>GREB1L-DT</i>	0.000868	0.00301	-1.1468	0.155	0.07
<i>LGSN</i>	0.018094	0.039361	-1.1468	0.155	0.07
<i>RCL1</i>	1.15E-09	4.24E-08	-1.1452	32.8898	14.87026
<i>MIR99AHG</i>	1.58E-05	0.000103	-1.145	4.655	2.10497
<i>EGILA</i>	3.06E-06	2.58E-05	-1.143	0.265	0.12
<i>MLXIPL</i>	4.06E-14	1.27E-11	-1.1417	114.2886	51.79948
<i>F11</i>	2.36E-07	3.17E-06	-1.1413	44.13937	20.01027
<i>DGAT2</i>	9.95E-08	1.56E-06	-1.141	79.16909	35.89992
<i>AASS</i>	0.000393	0.001544	-1.1378	4.22499	1.92
<i>INHBA-AS1</i>	9.87E-05	0.000479	-1.1375	0.11	0.05
<i>ALAD</i>	6.48E-14	1.88E-11	-1.1374	67.74443	30.79477
<i>CPN2</i>	1.42E-08	3.25E-07	-1.1371	79.79577	36.27993
<i>CES4A</i>	0.007966	0.019887	-1.1334	2.09499	0.95499

<i>SLC16A12</i>	0.00551	0.01453	-1.1312	0.23	0.105
<i>NDUFA6-DT</i>	3.78E-07	4.55E-06	-1.1273	6.21489	2.84497
<i>MAMDC2-AS1</i>	1.20E-05	8.18E-05	-1.1255	0.12	0.055
<i>ACR</i>	4.05E-06	3.28E-05	-1.1234	0.305	0.14
<i>MAGOH2P</i>	1.39E-05	9.28E-05	-1.1234	0.61	0.27999
<i>AOX1</i>	0.00022	0.000946	-1.1233	144.8756	66.50405
<i>ECM2</i>	4.46E-08	8.19E-07	-1.1223	7.63004	3.50497
<i>PBLD</i>	1.07E-07	1.65E-06	-1.1212	41.36483	19.0153
<i>C4BPA</i>	4.28E-05	0.000237	-1.1211	450.5249	207.1303
<i>GPT2</i>	0.007307	0.0185	-1.1167	40.00949	18.4502
<i>GPR182</i>	2.62E-05	0.000157	-1.1155	0.13	0.06
<i>VIPR1</i>	0.00042	0.001635	-1.1137	0.66	0.305
<i>ADCY10</i>	3.00E-05	0.000176	-1.1105	2.85003	1.31999
<i>ETNPPL</i>	0.00787	0.01968	-1.1105	17.01482	7.88017
<i>RALGPS2</i>	4.78E-11	3.52E-09	-1.1087	11.16006	5.17491
<i>RHEBP1</i>	1.36E-06	1.31E-05	-1.1077	11.40016	5.29007
<i>TMEM88</i>	2.81E-09	8.84E-08	-1.1021	4.75491	2.21499
<i>RBP5</i>	7.49E-05	0.00038	-1.102	104.705	48.77894
<i>LIPC</i>	5.31E-07	6.11E-06	-1.1019	63.8952	29.76923
<i>LCAT</i>	0.000512	0.001933	-1.1011	35.2453	16.4302
<i>F13B</i>	1.42E-07	2.07E-06	-1.1006	59.1549	27.58571
<i>GPR17</i>	4.13E-05	0.00023	-1.0995	0.15	0.07
<i>ANG</i>	9.00E-07	9.37E-06	-1.0976	444.6512	207.7856
<i>CYB5A</i>	6.07E-10	2.48E-08	-1.0963	758.1271	354.5783
<i>ALDH6A1</i>	3.15E-06	2.65E-05	-1.0939	33.32919	15.61478
<i>GNA14</i>	1.27E-07	1.89E-06	-1.0925	0.725	0.33999
<i>ITPR2</i>	3.50E-08	6.77E-07	-1.0905	10.61526	4.98501
<i>TMC3-AS1</i>	1.48E-09	5.20E-08	-1.0899	1.49	0.70001
<i>NALT1</i>	2.33E-05	0.000142	-1.089	0.58499	0.275
<i>C6orf201</i>	0.000189	0.000829	-1.0875	0.085	0.04
<i>MIR325HG</i>	0.008303	0.02056	-1.0875	0.085	0.04
<i>SIAH2-AS1</i>	0.000237	0.001008	-1.0875	0.17	0.08
<i>PON3</i>	2.29E-09	7.47E-08	-1.086	115.1091	54.2246
<i>CBLN1</i>	0.000488	0.001859	-1.0834	0.89	0.42
<i>HOGA1</i>	4.68E-05	0.000256	-1.0767	9.37508	4.44498
<i>FAM166A</i>	6.87E-05	0.000355	-1.074	0.2	0.095
<i>TMEM220</i>	7.59E-12	8.29E-10	-1.0719	23.55497	11.20509
<i>PEMT</i>	2.81E-09	8.84E-08	-1.0715	59.10909	28.1254
<i>F11-AS1</i>	3.84E-08	7.28E-07	-1.0712	2.91004	1.38498
<i>DYNLT4</i>	0.01305	0.029999	-1.0704	0.105	0.05
<i>GOLGA6A</i>	0.000848	0.00295	-1.0704	0.105	0.05
<i>LINC02292</i>	1.96E-05	0.000124	-1.0704	0.105	0.05
<i>RAMP3</i>	5.69E-05	0.000302	-1.0698	8.35505	3.9801
<i>MLIP</i>	0.000118	0.000556	-1.0696	8.18508	3.89989

<i>HMGCS1</i>	2.66E-05	0.000159	-1.0672	58.97353	28.14426
<i>HCN3</i>	3.24E-10	1.51E-08	-1.0665	10.1051	4.82491
<i>STEAP4</i>	0.001475	0.004718	-1.0641	0.80501	0.385
<i>ITIH2</i>	2.22E-09	7.30E-08	-1.063	736.4025	352.4677
<i>FYB2</i>	1.63E-06	1.51E-05	-1.0608	3.75505	1.8
<i>MSMO1</i>	8.76E-10	3.35E-08	-1.0559	124.9877	60.12077
<i>MICU3</i>	3.35E-06	2.79E-05	-1.0549	1.20503	0.58
<i>PRAP1</i>	6.29E-05	0.000329	-1.0547	756.1219	364.0018
<i>ACSS3</i>	0.003572	0.010018	-1.0543	15.17013	7.30495
<i>UGT2B7</i>	0.000613	0.002249	-1.0542	91.2763	43.95464
<i>ALDH5A1</i>	3.24E-15	1.93E-12	-1.0536	23.33046	11.24012
<i>MPDZ</i>	5.55E-08	9.70E-07	-1.0496	11.55014	5.57994
<i>DAB1</i>	0.01752	0.038327	-1.0495	0.445	0.215
<i>SPATA21</i>	0.011575	0.027121	-1.0489	0.29999	0.145
<i>SNHG22</i>	2.07E-06	1.86E-05	-1.0486	3.32002	1.60504
<i>EMCN</i>	2.49E-08	5.17E-07	-1.0457	4.48998	2.17503
<i>LIME1</i>	3.31E-05	0.000191	-1.0448	52.15521	25.27989
<i>CCDC158</i>	0.002065	0.00629	-1.0444	0.165	0.08
<i>PEBP1P2</i>	9.92E-06	6.96E-05	-1.0444	0.495	0.24
<i>NAGS</i>	6.79E-05	0.000351	-1.0418	12.26002	5.95499
<i>KLF9</i>	6.28E-08	1.07E-06	-1.0405	18.40968	8.94989
<i>RNF165</i>	0.004552	0.01232	-1.0395	0.185	0.09
<i>HSD17B8</i>	4.03E-12	4.94E-10	-1.0393	43.4555	21.14458
<i>PPP1R1C</i>	0.002231	0.00671	-1.0317	2.98498	1.46004
<i>SORBS2</i>	7.54E-07	8.08E-06	-1.0307	29.68439	14.53005
<i>DBNDD1</i>	0.001188	0.003918	-1.0283	13.13531	6.44013
<i>HDC</i>	0.001641	0.005166	-1.0275	0.265	0.13
<i>PPP1R3G</i>	0.006585	0.016929	-1.0259	2.81003	1.37998
<i>NUTM2A</i>	8.62E-06	6.20E-05	-1.0247	0.58999	0.28999
<i>FBP1</i>	6.07E-05	0.000319	-1.0238	122.4326	60.21507
<i>HMG2N2P47</i>	0.000954	0.003251	-1.0217	0.33499	0.165
<i>TFR2</i>	4.06E-07	4.84E-06	-1.0203	241.9327	119.2783
<i>PTGES3P2</i>	0.004086	0.011248	-1.0192	1.135	0.56
<i>BCO2</i>	0.01307	0.030014	-1.0188	2.32004	1.14501
<i>FMO5</i>	6.07E-09	1.65E-07	-1.017	92.46493	45.69025
<i>DHTKD1</i>	2.72E-08	5.57E-07	-1.016	27.16026	13.43004
<i>CPB2</i>	1.40E-09	4.97E-08	-1.0158	292.6854	144.7467
<i>GADD45G</i>	1.87E-05	0.000118	-1.0155	50.47028	24.96546
<i>ALDOB</i>	0.000464	0.00178	-1.014	1238.222	613.1306
<i>FBLN5</i>	0.002221	0.006684	-1.0135	8.05511	3.99001
<i>ALAS1</i>	5.68E-09	1.56E-07	-1.0128	129.9858	64.41969
<i>PPP1R3B</i>	1.12E-07	1.73E-06	-1.0122	13.64492	6.76506
<i>MTHFD1</i>	1.60E-06	1.49E-05	-1.0118	89.36539	44.31972
<i>LRRC2</i>	7.84E-08	1.28E-06	-1.0113	1.925	0.955

<i>RDH5</i>	0.000161	0.000723	-1.0097	20.20484	10.03497
<i>PAH</i>	6.09E-08	1.05E-06	-1.0088	357.7558	177.7851
<i>SLC25A25</i>	9.45E-07	9.69E-06	-1.007	27.15054	13.50989
<i>STARD5</i>	4.82E-08	8.75E-07	-1.0067	7.57509	3.76988
<i>KLKB1</i>	4.04E-09	1.19E-07	-1.0042	29.45505	14.68494
<i>NADK2</i>	4.74E-11	3.50E-09	-1.0037	65.10554	32.47046
<i>RPL23AP1</i>	0.000754	0.002679	-1.0034	2.09501	1.04502
<i>TLCD4</i>	3.45E-10	1.59E-08	-1.0024	14.76497	7.37
<i>TMEM150C</i>	2.49E-08	5.17E-07	-1.0014	5.11483	2.55497
<i>PECR</i>	4.60E-08	8.41E-07	-1.001	62.73162	31.34441
<i>ASTN1</i>	0.001312	0.004255	-1	0.04	0.02
<i>C1QTNF9</i>	0.000182	0.000801	-1	0.06	0.03
<i>CCDC73</i>	1.51E-05	9.96E-05	-1	0.1	0.05
<i>CYP2G1P</i>	0.006474	0.016695	-1	0.02	0.01
<i>CYP4Z1</i>	0.003689	0.010293	-1	0.06	0.03
<i>DCT</i>	0.007478	0.018881	-1	0.02	0.01
<i>FAM221B</i>	0.000111	0.00053	-1	0.02	0.01
<i>FMR1-AS1</i>	0.002436	0.007227	-1	0.02	0.01
<i>LINC00612</i>	0.000493	0.001874	-1	0.06	0.03
<i>LINC01482</i>	0.001428	0.004582	-1	0.02	0.01
<i>LINCR-0001</i>	0.022265	0.046949	-1	0.12	0.06
<i>LRRC3B</i>	0.00212	0.006427	-1	0.06	0.03
<i>LRRC77P</i>	8.89E-05	0.000439	-1	0.12	0.06
<i>MAPT-IT1</i>	0.000929	0.003185	-1	0.02	0.01
<i>NLRP14</i>	0.020953	0.044552	-1	0.02	0.01
<i>OR2C1</i>	0.001681	0.005271	-1	0.02	0.01
<i>OR7E29P</i>	0.000156	0.000703	-1	0.06	0.03
<i>PDE9A-AS1</i>	0.000642	0.002339	-1	0.04	0.02
<i>RNF217-AS1</i>	0.004054	0.011181	-1	0.02	0.01
<i>SAXO1</i>	0.016136	0.035759	-1	0.02	0.01
<i>SEPHS1P6</i>	0.001259	0.004116	-1	0.06	0.03
<i>SLC22A24</i>	0.002307	0.006914	-1	0.02	0.01
<i>TCTE1</i>	1.84E-05	0.000117	-1	0.04	0.02
<i>TDRD15</i>	0.002085	0.006341	-1	0.02	0.01
<i>USH2A</i>	0.00062	0.00227	-1	0.17	0.085
