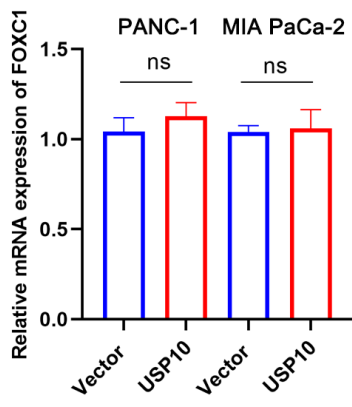
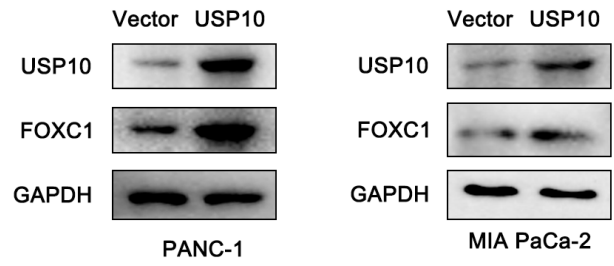
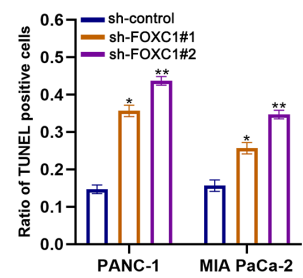
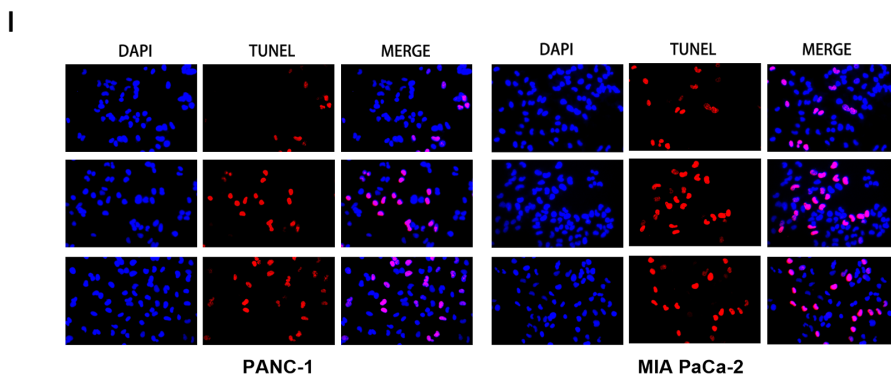
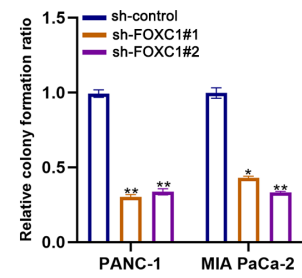
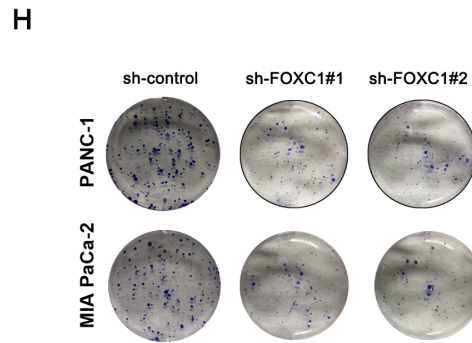
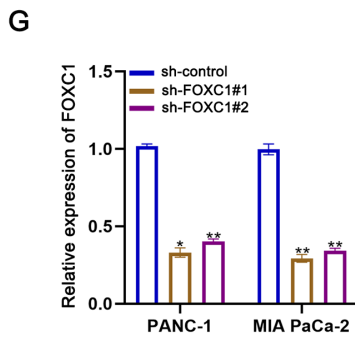
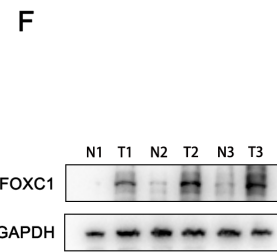
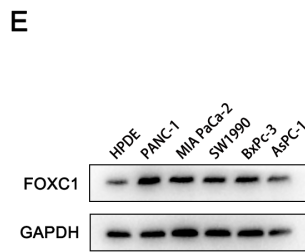
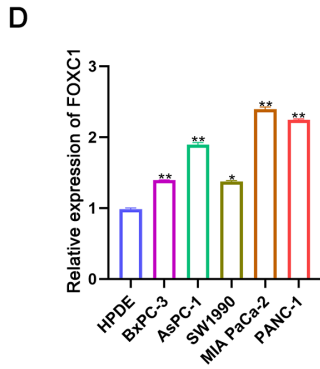
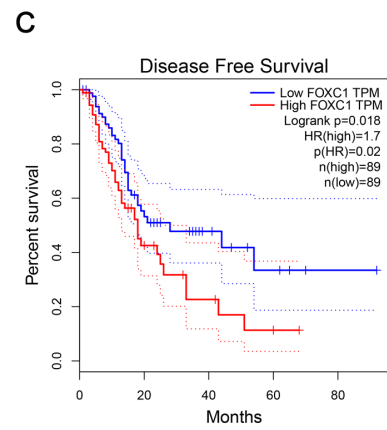
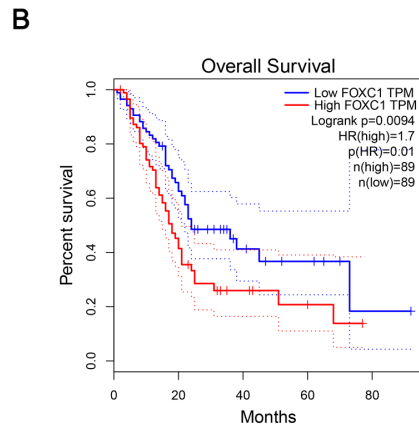
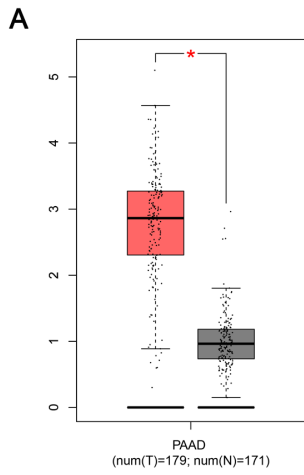


**Supplemental Figure 1. USP10 overexpression promoted the protein expression of FOXC1 .** (a) PCR analysis was performed to measure the effect of USP10 overexpression on the mRNA of FOXC1.(b) Western blot was performed to measure the effect of USP10 overexpression on the protein of FOXC1.

**Supplemental Figure 2. FOXC1 was upregulated in PDAC and high FOXC1 expression was remarkably associated with poor prognosis.** (a) The expression of FOXC1 in PDAC tissues based on TCGA database. (b) The overall survival rate of the PDAC patients with high or low FOXC1 expression was estimated by Kaplan-Meier analysis. (c) The disease free survival rate of the PDAC patients with high or low FOXC1 expression was estimated by Kaplan-Meier analysis. (d) The expression of FOXC1 was analyzed in PDAC cell lines by using PCR analysis. (e) The expression of FOXC1 was analyzed in PDAC cell lines by using WB analysis. (f) The expression of FOXC1 was analyzed in PDAC tissues by using WB analysis. (g) The transfection effects of sh-FOXC1 were evaluated by PCR analysis. (h) The effect of FOXC1 on cell proliferation in PDAC cells were measured by colony forming assays. (i) The effect of FOXC1 on cell apoptosis in PDAC cells were measured by Tunel assays.

**A****B**



**Supplemental Table 1. The sequences involved in this study.**

Gene		Sequence (5'—3')
USP10	Forward	AAGCAAGCTATGGCTCCATCG
	Reverse	CTCCGCCTCCACATTAGAAC
FOXC1	Forward	TGTTGAGTCACAGAGGATCG
	Reverse	ACAGTCGTAGACGAAAGCTCC
GAPDH	Forward	CTGGGCTACACTGAGCACC
	Reverse	AAGTGGTCGTTGAGGGCAATG

**Supplementary Table 2. The sequences of shRNA in this study.**

Name	Sequences:5'→3'
sh-USP10-1	CCGGGGACAAGAAUAUCAGAGAAUUCTCGAGUUCUCUGAUA UUCUUGUCCAUTTTTTG
sh-USP10-2	CCGGGCAGGUUGAAGUCAAGAAGGCTCGAGUUCUUUGACU UCAACCUGCUUTTTTTG
sh-NC	CCGGCAACAAGATGAAGAGCACCAACTCGAGTTGGTGCTCTT CATCTTGTTGTTTTG
sh-FOXC1-1	CCGGCGGGAAUAGUAGCUGUCAAAUUCTCGAGUUGACAGCUA CUAUUCCCGUUTTTTTG
sh-FOXC1-2	CCGGCCUACAACAUGUUCGAGAACGCTCGAGUUCUCGAACA UGUUGUAGGAGTTTTG
sh-control	CCGGCAACAAGATGAAGAGCACCAACTCGAGTTGGTGCTCTT CATCTTGTTGTTTTG