

Uncropped Western blots

Figure 2A

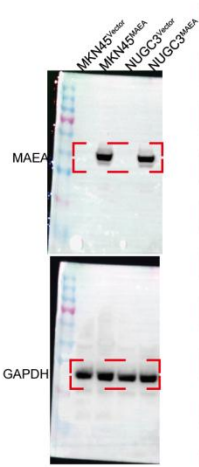


Figure 2B



Figure 4D

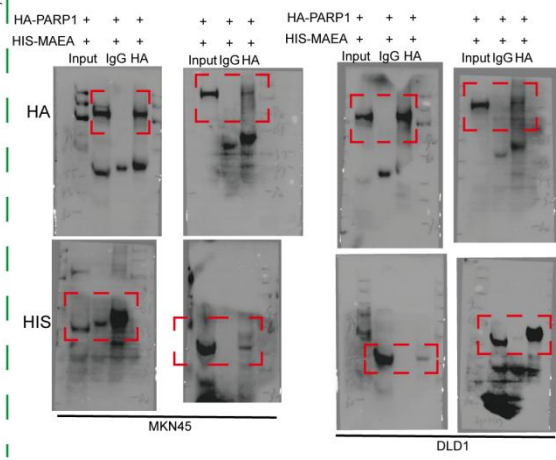


Figure 4E

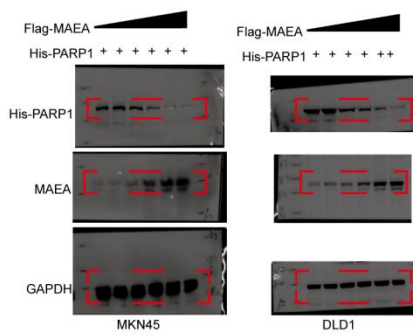


Figure 4G

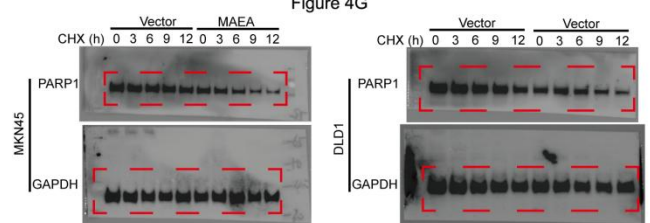


Figure 4H

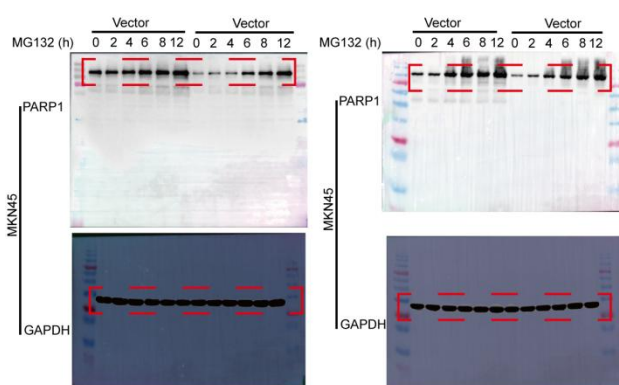


Figure 4I

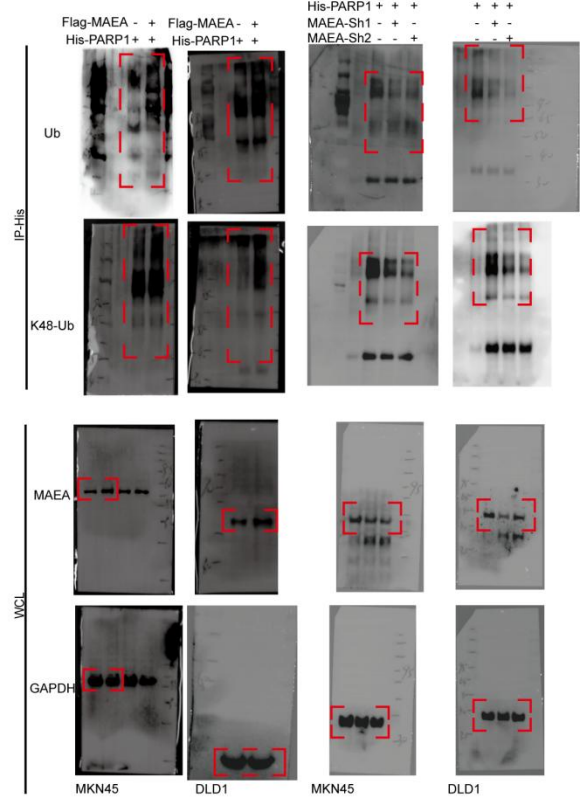
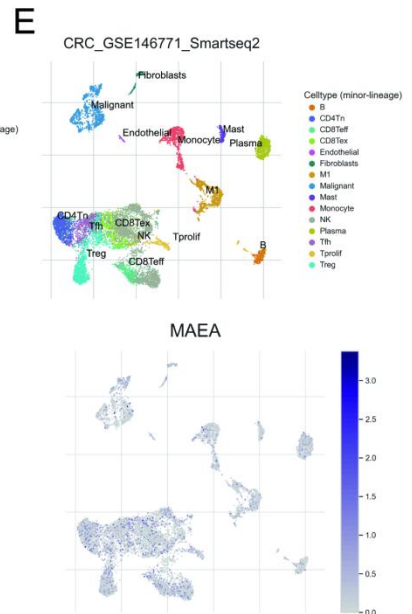
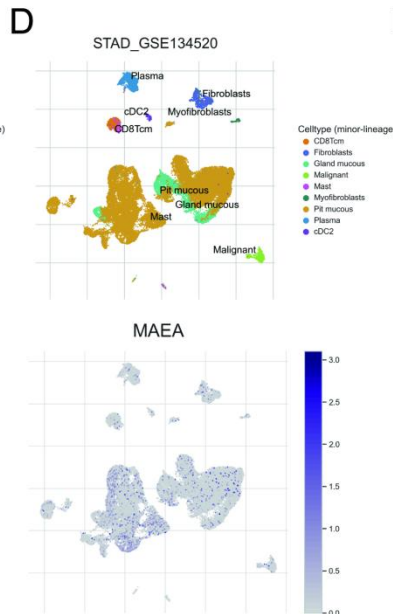
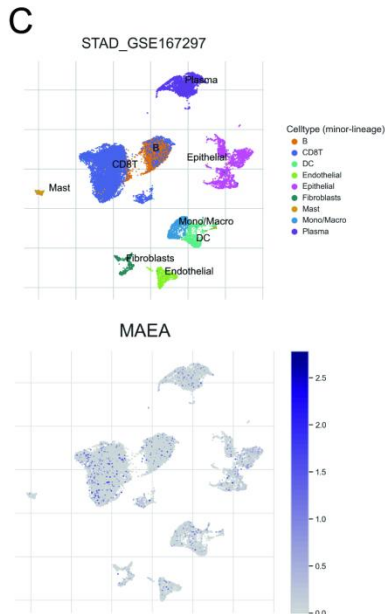
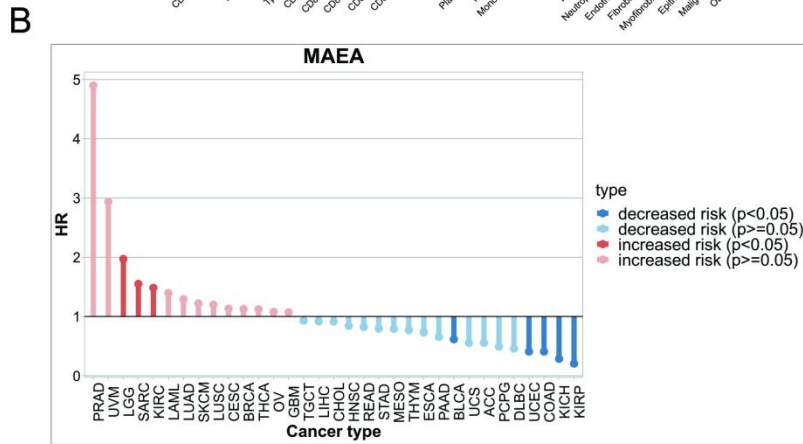
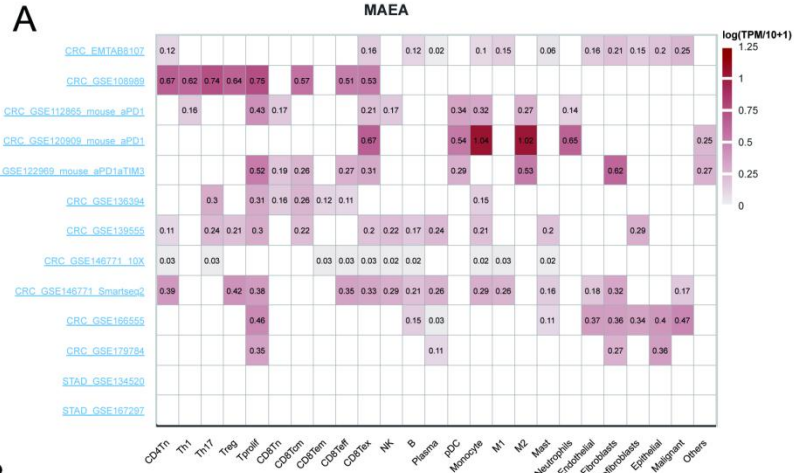


Figure S1



Supplementary Table 1. Correlation between MAEA expression and clinicopathological characteristics of gastric patients.

Clinicopathological Characteristics	Low MAEA	High MAEA	p-Value
Number	73	96	
Age, n (%)			0.193
<60 years	37 (50.7)	39 (36.4)	
≥60 years	36 (49.3)	57 (63.6)	
Gender, n (%)			0.154
Male	56 (76.7)	64 (74.5)	
Female	17 (23.3)	32 (25.5)	
Histologic type, n (%)			0.133
Tubular or papillary adenocarcinoma	66 (90.4)	76 (85.5)	
Signet-ring cell carcinoma	6 (8.2)	14 (7.3)	
Mucinous adenocarcinoma	1 (1.4)	5 (5.5)	
^a Others	0 (0)	1 (1.7)	
Differentiation, n (%)			0.231
Well-Moderately	59 (26.5)	70 (18.2)	
Poor	14 (73.5)	26 (81.8)	
Lauren's classification, n (%)			0.028
Diffuse type	35 (47.9)	40 (32.7)	
Intestinal type	23 (31.5)	47 (50.9)	
Mixed type	15 (20.6)	8 (16.4)	
Invasion Depth, n (%)			0.153
T1 + T2	11 (15.1)	23 (23.9)	
T3 + T4	62 (84.9)	73 (76.1)	
Lymph Node Metastasis, n (%)			0.065
N0	13 (17.8)	29 (30.2)	
N1/N2/N3	60 (82.2)	67 (69.8)	
Distant Metastasis, n (%)			0.014
M0	53 (72.6)	84 (87.5)	
M1	20 (27.4)	12 (12.5)	
TNM Stage, n (%)			0.076
I+II	18 (24.7)	36 (37.5)	
III+IV	55 (75.3)	60 (62.5)	
Perineural Invasion, n (%)			0.001
Absent	21 (28.8)	58 (60.4)	
Present	52 (71.2)	38 (39.6)	
Vessel Invasion, n (%)			0.640
Absent	32 (43.8)	67 (69.8)	
Present	41 (56.2)	29 (30.2)	

Statistical analyses were performed by the Pearson χ^2 test

^aOthers: hepatoid adenocarcinoma and squamous carcinoma

Supplementary Table 2. Univariate and multivariate analyses for the prognostic factors of overall survival in gastric cancer patients.

Variable	Univariate Analysis		Multivariate Analysis	
	HR (95% CI)	p-Value	HR (95% CI)	p-Value
Age (≥ 60 years vs. < 60 years)	0.782 (0.506–1.210)	0.269	0.523 (0.302–0.907)	0.021
Gender (male vs. female)	1.348 (0.857–2.120)	0.196	1.396 (0.770–2.530)	0.272
Histology (tubular/papillary adenocarcinoma vs. the others)	1.763 (0.850–3.656)	0.128	1.492 (0.623–3.571)	0.369
Differentiation (well/moderate vs. poor)	0.657 (0.381–1.136)	0.133	0.584 (0.285–1.197)	0.142
Invasion depth (T3/T4 vs. T1/T2)	6.147 (2.484–15.215)	< 0.001	2.826 (0.907–8.804)	0.073
Lymph Node Metastasis (N+ vs. N0)	4.974 (2.393–10.339)	< 0.001	2.686 (1.115–6.475)	0.028
Distant metastasis (M1 vs. M0)	3.553 (2.206–5.723)	< 0.001	2.127 (1.182–3.826)	0.012
Perineural Invasion (present vs. absent)	3.323 (2.020–5.467)	< 0.001	1.885 (0.916–3.878)	0.085
Vessel Invasion (present vs. absent)	2.125 (1.374–3.286)	0.001	1.136 (0.651–1.982)	0.653
MAEA expression (high vs. low)	0.211 (0.120–0.370)	< 0.001	0.238 (0.128–0.446)	0.001

Supplementary Table 3. Univariate and multivariate analyses for the prognostic factors of disease free survival in gastric cancer patients.

Variable	Univariate Analysis		Multivariate Analysis	
	HR (95% CI)	p-Value	HR (95% CI)	p-Value
Age (≥ 60 years vs. < 60 years)	0.782 (0.506–1.210)	0.269	0.814 (0.402-1.647)	0.556
Gender (male vs. female)	1.348 (0.857–2.120)	0.196	1.311 (0.624-2.754)	0.475
Histology (tubular/papillary adenocarcinoma vs. the others)	1.763 (0.850–3.656)	0.128	1.491 (0.587-3.789)	0.401
Differentiation (well/moderate vs. poor)	0.657 (0.381–1.136)	0.133	0.450 (0.179-1.128)	0.089
Invasion depth (T3/T4 vs. T1/T2)	6.147 (2.484–15.215)	< 0.001	2.847 (0.720-11.258)	0.136
Lymph Node Metastasis (N+ vs. N0)	4.974 (2.393–10.339)	< 0.001	1.957 (0.723-5.295)	0.186
Distant metastasis (M1 vs. M0)	3.553 (2.206–5.723)	< 0.001	1.006 (0.414-2.444)	0.989
Perineural Invasion (present vs. absent)	3.323 (2.020–5.467)	< 0.001	1.753 (0.700-4.394)	0.231
Vessel Invasion (present vs. absent)	2.125 (1.374–3.286)	0.001	1.911 (0.964-4.110)	0.063
MAEA expression (high vs. low)	2.745 (1.625–4.638)	< 0.001	0.327 (0.155-0.691)	0.003