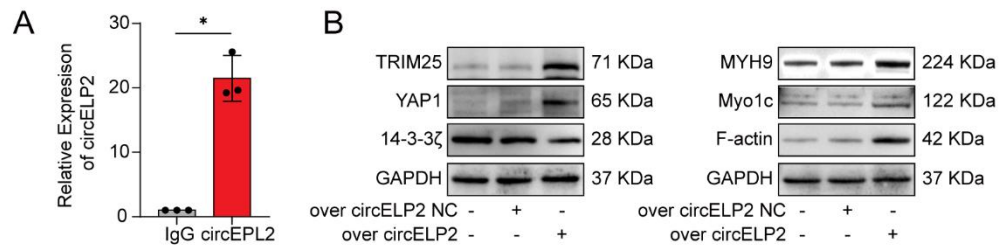
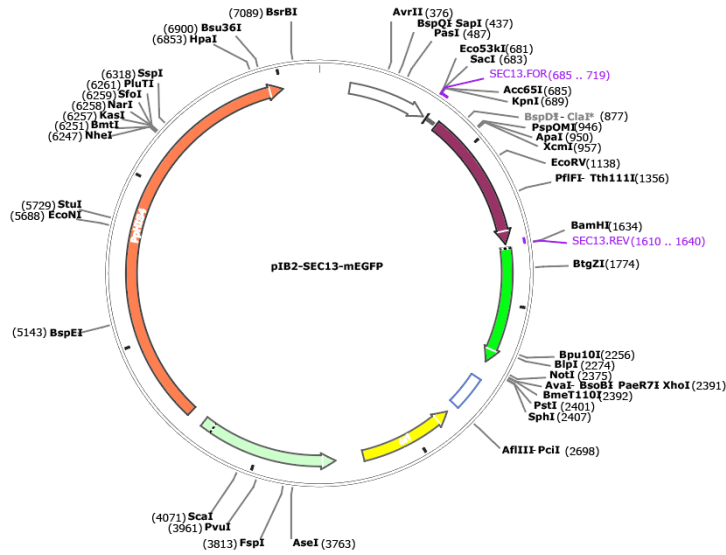


**Figure S1. (A)** L929 cells were transfected with over-circELP2, followed by RIP assay. The result showed that TRIM25 interacted with circELP2. **(B)** Western blot showed that the levels of TRIM25, YAP1, MYH9, Myo1c, and F-actin were increased in the over-circELP2 group; the level of 14-3-3 $\zeta$  had an opposite trend.  $p^* < 0.05$ , mean  $\pm$  SD.



**Figure S2.** The vector map of the circELP2 overexpression plasmid.



**Table S1.** The antibody details in the Western blot experiment.

<b>Antibody Name</b>	<b>Dilution</b>	<b>Manufacturer</b>	<b>Catalog Number</b>
anti-Collagen III	1:1000	Affinity, China	AF5457
anti-Collagen I	1:1000	Affinity, China	AF7001
anti- $\alpha$ -SMA	1:1000	Affinity, China	AF1032
anti-Vimentin	1:1000	Affinity, China	AF7013
anti-GAPDH	1:1000	Affinity, China	AF7021
anti-FAP	1:1000	Cell Signaling Technology, USA	66562
anti-S100A4	1:20000	Proteintech, China	16105-1-AP
anti-TRIM25	1:20000	Proteintech, China	12573-1-AP
anti-14-3-3 $\zeta$	1:5000	Proteintech, China	14881-1-AP
anti-p-YAP1	1:1000	Affinity, China	AF3328
anti-YAP1	1:5000	Proteintech, China	13584-1-AP
anti-BRD4	1:1000	Cell Signaling Technology, USA	63759
anti-H3K27ac	1:2000	ABclonal, China	A7253

anti- Acetylation	1:1000	PTM Bio, China	PTM-102
anti-LaminB1	1:10000	Bioswamp, China	RMAB60267
anti-β-Tubulin	1:2000	Affinity, China	AF7011
anti-MYH9	1:20000	Proteintech, China	11128-1-AP
anti-Myo1c	1:1000	Bioswmp, China	PAB53130
anti-F-actin	1:500	Abcam, UK	Ab205
HRP Goat Anti- Rabbit IgG	1:5000	Bioswamp, China	SAB48169
HRP Goat Anti- Mouse IgG	1:5000	Bioswamp, China	SAB48168

**Table S2.** The protein peptide information bound to circELP2 identified by mass spectrometry.

Accession	Gene Name	Description	Mass	Score	Matches	Sequences	emPAI	Coverage	
<a href="#">P04264</a>	KRT1	Keratin, type II cytoskeletal 1 OS=I	66170	9440	329(259)	33(27)	4.45	52%	<a href="#">P04264_uniprot</a>
<a href="#">P13645</a>	KRT10	Keratin, type I cytoskeletal 10 OS=I	59020	6132	240(181)	25(23)	3.32	38%	<a href="#">P13645_uniprot</a>
<a href="#">P35908</a>	KRT2	Keratin, type II cytoskeletal 2 epide:	65678	2643	104(82)	18(17)	1.41	27%	<a href="#">P35908_uniprot</a>
<a href="#">P35579</a>	MYH9	Myosin-9 OS=Homo sapiens OX=9	227646	2283	156(98)	63(51)	1.31	29%	<a href="#">P35579_uniprot</a>
<a href="#">P35527</a>	KRT9	Keratin, type I cytoskeletal 9 OS=H	62255	1734	86(61)	17(14)	1.66	35%	<a href="#">P35527_uniprot</a>
<a href="#">P08779</a>	KRT16	Keratin, type I cytoskeletal 16 OS=I	51578	1594	79(49)	20(16)	2.24	46%	<a href="#">P08779_uniprot</a>
<a href="#">P04259</a>	KRT6B	Keratin, type II cytoskeletal 6B OS=	60315	1347	76(50)	18(13)	1.00	30%	<a href="#">P04259_uniprot</a>
<a href="#">P02533</a>	KRT14	Keratin, type I cytoskeletal 14 OS=I	51872	1300	58(45)	17(13)	1.37	37%	<a href="#">P02533_uniprot</a>
<a href="#">P60709</a>	ACTB	Actin, cytoplasmic 1 OS=Homo sap	42052	1281	72(56)	7(7)	1.67	23%	<a href="#">P60709_uniprot</a>
<a href="#">P02538</a>	KRT6A	Keratin, type II cytoskeletal 6A OS=	60293	1137	86(50)	23(16)	1.34	36%	<a href="#">P02538_uniprot</a>
<a href="#">P41252</a>	IARS	Isoleucine--tRNA ligase, cytoplasmic	145718	1113	87(49)	28(22)	0.74	23%	<a href="#">P41252_uniprot</a>
<a href="#">Q7Z794</a>	KRT77	Keratin, type II cytoskeletal 1b OS=	62149	1098	43(32)	8(6)	0.36	14%	<a href="#">Q7Z794_uniprot</a>
<a href="#">P48668</a>	KRT6C	Keratin, type II cytoskeletal 6C OS=	60273	1028	80(46)	20(15)	1.22	32%	<a href="#">P48668_uniprot</a>
<a href="#">Q04695</a>	KRT17	Keratin, type I cytoskeletal 17 OS=I	48361	916	46(35)	15(12)	1.21	30%	<a href="#">Q04695_uniprot</a>
<a href="#">P13647</a>	KRT5	Keratin, type II cytoskeletal 5 OS=I	62568	885	72(46)	24(19)	1.64	37%	<a href="#">P13647_uniprot</a>
<a href="#">P54136</a>	RARS	Arginine--tRNA ligase, cytoplasmic	76129	805	63(37)	25(19)	1.32	41%	<a href="#">P54136_uniprot</a>
<a href="#">P15924</a>	DSP	Desmoplakin OS=Homo sapiens O	334021	730	83(35)	46(23)	0.26	17%	<a href="#">P15924_uniprot</a>
<a href="#">P11142</a>	HSPA8	Heat shock cognate 71 kDa protein	71082	671	57(22)	21(11)	0.97	33%	<a href="#">P11142_uniprot</a>
<a href="#">P62805</a>	HIST1H4A	Histone H4 OS=Homo sapiens OX=	11360	666	33(25)	5(4)	2.77	41%	<a href="#">P62805_uniprot</a>
<a href="#">P47929</a>	LGALS7	Galectin-7 OS=Homo sapiens OX=	15123	579	36(16)	6(5)	2.38	51%	<a href="#">P47929_uniprot</a>
<a href="#">P48594</a>	SERPINB1	Serpin B4 OS=Homo sapiens OX=	44997	523	20(15)	9(7)	0.76	24%	<a href="#">P48594_uniprot</a>
<a href="#">P04792</a>	HSPB1	Heat shock protein beta-1 OS=Hom	22826	517	18(13)	4(4)	0.98	24%	<a href="#">P04792_uniprot</a>
<a href="#">Q5VTE0</a>	EEF1A1P1	Putative elongation factor 1-alpha-li	50495	510	22(15)	7(5)	0.37	16%	<a href="#">Q5VTE0_uniprot</a>
<a href="#">P04083</a>	ANXA1	Annexin A1 OS=Homo sapiens OX	38918	476	21(17)	9(8)	1.08	31%	<a href="#">P04083_uniprot</a>
<a href="#">P53621</a>	COPA	Coatomer subunit alpha OS=Homo	139797	463	49(20)	27(15)	0.48	22%	<a href="#">P53621_uniprot</a>
<a href="#">P07355</a>	ANXA2	Annexin A2 OS=Homo sapiens OX	38808	439	31(20)	13(12)	1.89	40%	<a href="#">P07355_uniprot</a>
<a href="#">P11021</a>	HSPA5	Endoplasmic reticulum chaperone	E72402	421	31(15)	16(12)	0.86	30%	<a href="#">P11021_uniprot</a>
<a href="#">P0DMV8</a>	HSPA1A	Heat shock 70 kDa protein 1A OS=	70294	416	33(19)	13(11)	0.81	24%	<a href="#">P0DMV8_uniprot</a>
<a href="#">P07900</a>	HSP90AA1	Heat shock protein HSP 90-alpha O	85006	414	30(15)	15(8)	0.35	25%	<a href="#">P07900_uniprot</a>
<a href="#">P31947</a>	SFN	14-3-3 protein sigma OS=Homo sap	27871	393	38(21)	8(7)	1.76	29%	<a href="#">P31947_uniprot</a>

<a href="#">P08238</a>	HSP90AB	Heat shock protein HSP 90-beta OS=Homo sapiens	389	31(14)	16(7)	0.31	28%	<a href="#">P08238_uniprot</a>
<a href="#">P31151</a>	S100A7	Protein S100-A7 OS=Homo sapiens	369	14(11)	4(4)	1.84	23%	<a href="#">P31151_uniprot</a>
<a href="#">P04406</a>	GAPDH	Glyceraldehyde-3-phosphate dehydr	351	22(17)	8(8)	1.40	24%	<a href="#">P04406_uniprot</a>
<a href="#">Q9UM54</a>	MYO6	Unconventional myosin-VI OS=Hoi	349	32(18)	18(12)	0.38	15%	<a href="#">Q9UM54_uniprot</a>
<a href="#">Q9NZT1</a>	CALML5	Calmodulin-like protein 5 OS=Hom	347	18(11)	5(3)	1.63	36%	<a href="#">Q9NZT1_uniprot</a>
<a href="#">P02545</a>	LMNA	Prelamin-A/C OS=Homo sapiens O	344	22(11)	16(9)	0.61	28%	<a href="#">P02545_uniprot</a>
<a href="#">Q15046</a>	KARS	Lysine--tRNA ligase OS=Homo sap	342	39(18)	17(9)	0.67	26%	<a href="#">Q15046_uniprot</a>
<a href="#">P06702</a>	S100A9	Protein S100-A9 OS=Homo sapiens	312	20(9)	6(5)	2.94	63%	<a href="#">P06702_uniprot</a>
<a href="#">P05109</a>	S100A8	Protein S100-A8 OS=Homo sapiens	299	16(10)	4(3)	2.01	44%	<a href="#">P05109_uniprot</a>
<a href="#">P31944</a>	CASP14	Caspase-14 OS=Homo sapiens OX=	290	13(12)	8(7)	1.20	29%	<a href="#">P31944_uniprot</a>
<a href="#">P29508</a>	SERPINB	Serpins B3 OS=Homo sapiens OX=	280	15(12)	9(8)	0.77	19%	<a href="#">P29508_uniprot</a>
<a href="#">Q00610</a>	CLTC	Clathrin heavy chain 1 OS=Homo s	266	18(9)	11(8)	0.14	8%	<a href="#">Q00610_uniprot</a>
<a href="#">P0DOX5</a>		Immunoglobulin gamma-1 heavy ch	263	30(10)	7(5)	0.67	16%	<a href="#">P0DOX5_uniprot</a>
<a href="#">Q02413</a>	DSG1	Desmoglein-1 OS=Homo sapiens O	256	19(9)	10(8)	0.25	13%	<a href="#">Q02413_uniprot</a>
<a href="#">P63104</a>	YWHAZ	14-3-3 protein zeta/delta OS=Homo	255	18(10)	5(3)	0.76	22%	<a href="#">P63104_uniprot</a>
<a href="#">P08670</a>	VIM	Vimentin OS=Homo sapiens OX=9	238	22(14)	15(9)	0.81	28%	<a href="#">P08670_uniprot</a>
<a href="#">Q9BQE3</a>	TUBA1C	Tubulin alpha-1C chain OS=Homo	230	31(12)	8(4)	0.37	22%	<a href="#">Q9BQE3_uniprot</a>
<a href="#">P14923</a>	JUP	Junction plakoglobin OS=Homo sa	224	20(9)	10(6)	0.26	16%	<a href="#">P14923_uniprot</a>
<a href="#">P04075</a>	ALDOA	Fructose-bisphosphate aldolase A	220	19(8)	8(5)	0.75	32%	<a href="#">P04075_uniprot</a>
<a href="#">Q13813</a>	SPTAN1	Spectrin alpha chain, non-erythrocy	214	34(10)	29(10)	0.13	13%	<a href="#">Q13813_uniprot</a>
<a href="#">Q6UWP8</a>	SBSN	Suprabasin OS=Homo sapiens OX=	209	10(6)	7(4)	0.37	20%	<a href="#">Q6UWP8_uniprot</a>
<a href="#">P81605</a>	DCD	Dermcidin OS=Homo sapiens OX=	205	6(5)	2(2)	0.69	12%	<a href="#">P81605_uniprot</a>
<a href="#">P06733</a>	ENO1	Alpha-enolase OS=Homo sapiens O	205	17(9)	8(6)	0.50	21%	<a href="#">P06733_uniprot</a>
<a href="#">P35580</a>	MYH10	Myosin-10 OS=Homo sapiens OX=	200	27(13)	15(7)	0.10	8%	<a href="#">P35580_uniprot</a>
<a href="#">Q0ZGT2</a>	NEXN	Nexilin OS=Homo sapiens OX=960	192	22(10)	12(7)	0.43	13%	<a href="#">Q0ZGT2_uniprot</a>
<a href="#">P60174</a>	TPI1	Triosephosphate isomerase OS=Hoi	186	12(6)	6(4)	0.50	20%	<a href="#">P60174_uniprot</a>
<a href="#">O43707</a>	ACTN4	Alpha-actinin-4 OS=Homo sapiens	178	23(9)	17(9)	0.40	26%	<a href="#">O43707_uniprot</a>
<a href="#">P14618</a>	PKM	Pyruvate kinase PKM OS=Homo sa	178	21(11)	9(7)	0.73	23%	<a href="#">P14618_uniprot</a>
<a href="#">P00338</a>	LDHA	L-lactate dehydrogenase A chain O	170	17(10)	9(6)	0.82	29%	<a href="#">P00338_uniprot</a>
<a href="#">P62937</a>	PPIA	Peptidyl-prolyl cis-trans isomerase	164	9(7)	5(5)	1.34	22%	<a href="#">P62937_uniprot</a>
<a href="#">P12956</a>	XRCC6	X-ray repair cross-complementing p	162	13(5)	7(4)	0.20	13%	<a href="#">P12956_uniprot</a>
<a href="#">Q15149</a>	PLEC	Plectin OS=Homo sapiens OX=960	161	25(7)	21(6)	0.04	5%	<a href="#">Q15149_uniprot</a>
<a href="#">P27348</a>	YWHAQ	14-3-3 protein theta OS=Homo sapi	159	13(8)	3(3)	0.57	13%	<a href="#">P27348_uniprot</a>
<a href="#">P0DP23</a>	CALM1	Calmodulin-1 OS=Homo sapiens O	151	9(5)	3(2)	0.73	30%	<a href="#">P0DP23_uniprot</a>

<a href="#">P62258</a>	YWHAE	14-3-3 protein epsilon OS=Homo sa	29326	149	15(10)	5(4)	0.71	22%	<a href="#">P62258_uniprot</a>
<a href="#">P62979</a>	RPS27A	Ubiquitin-40S ribosomal protein S2	18296	149	10(6)	4(4)	0.97	25%	<a href="#">P62979_uniprot</a>
<a href="#">Q86SG5</a>	S100A7A	Protein S100-A7A OS=Homo sapie	11412	143	6(4)	2(2)	1.20	21%	<a href="#">Q86SG5_uniprot</a>
<a href="#">P07476</a>	IVL	Involucrin OS=Homo sapiens OX=	68551	142	15(7)	12(7)	0.39	27%	<a href="#">P07476_uniprot</a>
<a href="#">P06396</a>	GSN	Gelsolin OS=Homo sapiens OX=	9686043	134	12(5)	6(4)	0.16	13%	<a href="#">P06396_uniprot</a>
<a href="#">P61981</a>	YWHAH	14-3-3 protein gamma OS=Homo sa	28456	132	13(9)	4(4)	0.74	16%	<a href="#">P61981_uniprot</a>
<a href="#">P30086</a>	PEBP1	Phosphatidylethanolamine-binding	121158	131	4(3)	2(2)	0.34	18%	<a href="#">P30086_uniprot</a>
<a href="#">Q13835</a>	PKP1	Plakophilin-1 OS=Homo sapiens O	84119	130	11(3)	6(2)	0.08	10%	<a href="#">Q13835_uniprot</a>
<a href="#">P36952</a>	SERPINB5	Serpin B5 OS=Homo sapiens OX=	942530	129	5(4)	4(3)	0.35	14%	<a href="#">P36952_uniprot</a>
<a href="#">Q14258</a>	TRIM25	E3 ubiquitin/ISG15 ligase TRIM25	72581	127	8(5)	6(5)	0.25	11%	<a href="#">Q14258_uniprot</a>
<a href="#">P01834</a>	IGKC	Immunoglobulin kappa constant OS	11929	125	13(5)	2(2)	0.66	35%	<a href="#">P01834_uniprot</a>
<a href="#">P07339</a>	CTSD	Cathepsin D OS=Homo sapiens OX	45037	125	12(6)	5(4)	0.33	14%	<a href="#">P07339_uniprot</a>
<a href="#">P23396</a>	RPS3	40S ribosomal protein S3 OS=Homo	26842	125	12(5)	7(3)	0.42	30%	<a href="#">P23396_uniprot</a>
<a href="#">Q9UHB6</a>	LIMA1	LIM domain and actin-binding prote	85630	122	13(5)	9(4)	0.30	15%	<a href="#">Q9UHB6_uniprot</a>
<a href="#">P13639</a>	EEF2	Elongation factor 2 OS=Homo sapie	96246	122	11(8)	8(5)	0.18	8%	<a href="#">P13639_uniprot</a>
<a href="#">Q06830</a>	PRDX1	Peroxiredoxin-1 OS=Homo sapiens	22324	121	11(6)	4(4)	0.75	22%	<a href="#">Q06830_uniprot</a>
<a href="#">E9PAV3</a>	NACA	Nascent polypeptide-associated cor	205979	119	4(3)	2(2)	0.03	1%	<a href="#">E9PAV3_uniprot</a>
<a href="#">P00558</a>	PGK1	Phosphoglycerate kinase 1 OS=Homo	44985	116	10(4)	4(2)	0.33	12%	<a href="#">P00558_uniprot</a>
<a href="#">P04080</a>	CSTB	Cystatin-B OS=Homo sapiens OX=	11190	114	7(4)	2(2)	1.24	24%	<a href="#">P04080_uniprot</a>
<a href="#">Q07020</a>	RPL18	60S ribosomal protein L18 OS=Homo	21735	114	4(2)	3(2)	0.33	19%	<a href="#">Q07020_uniprot</a>
<a href="#">P07237</a>	P4HB	Protein disulfide-isomerase OS=Homo	57480	113	25(7)	15(6)	0.40	33%	<a href="#">P07237_uniprot</a>
<a href="#">Q5QNW6</a>	HIST2H2E	Histone H2B type 2-F OS=Homo sa	13912	112	9(7)	3(3)	0.93	26%	<a href="#">Q5QNW6_uniprot</a>
<a href="#">P02768</a>	ALB	Serum albumin OS=Homo sapiens	71317	110	11(4)	5(2)	0.14	9%	<a href="#">P02768_uniprot</a>
<a href="#">P10599</a>	TXN	Thioredoxin OS=Homo sapiens OX	12015	109	4(3)	1(1)	0.29	12%	<a href="#">P10599_uniprot</a>
<a href="#">P68371</a>	TUBB4B	Tubulin beta-4B chain OS=Homo sa	50255	104	18(5)	6(3)	0.29	17%	<a href="#">P68371_uniprot</a>
<a href="#">P01876</a>	IGHA1	Immunoglobulin heavy constant alp	38486	101	6(2)	3(2)	0.18	11%	<a href="#">P01876_uniprot</a>
<a href="#">P15311</a>	EZR	Ezrin OS=Homo sapiens OX=	960669484	101	13(6)	6(4)	0.20	10%	<a href="#">P15311_uniprot</a>
<a href="#">Q92876</a>	KLK6	Kallikrein-6 OS=Homo sapiens OX	27523	101	4(4)	2(2)	0.26	13%	<a href="#">Q92876_uniprot</a>
<a href="#">Q6KB66</a>	KRT80	Keratin, type II cytoskeletal 80 OS	51007	99	8(4)	8(4)	0.28	20%	<a href="#">Q6KB66_uniprot</a>
<a href="#">Q09666</a>	AHNAK	Neuroblast differentiation-associate	629213	98	35(4)	27(3)	0.02	6%	<a href="#">Q09666_uniprot</a>
<a href="#">P06753</a>	TPM3	Tropomyosin alpha-3 chain OS=Homo	32987	98	6(5)	4(3)	0.33	13%	<a href="#">P06753_uniprot</a>
<a href="#">P09211</a>	GSTP1	Glutathione S-transferase P OS=Homo	23569	95	8(4)	5(3)	0.49	36%	<a href="#">P09211_uniprot</a>
<a href="#">P58107</a>	EPPK1	Epiplakin OS=Homo sapiens OX=	9557674	93	18(3)	12(2)	0.01	3%	<a href="#">P58107_uniprot</a>
<a href="#">P55072</a>	VCP	Transitional endoplasmic reticulum	89950	90	12(5)	9(5)	0.24	11%	<a href="#">P55072_uniprot</a>

<a href="#">P26640</a>	VARS	Valine--tRNA ligase OS=Homo sap	141642	88	7(3)	7(3)	0.10	6%	<a href="#">P26640_uniprot</a>
<a href="#">O75223</a>	GGCT	Gamma-glutamylcyclotransferase O	21222	88	8(3)	4(3)	0.55	27%	<a href="#">O75223_uniprot</a>
<a href="#">P27482</a>	CALML3	Calmodulin-like protein 3 OS=Hom	16937	85	5(3)	5(3)	0.72	43%	<a href="#">P27482_uniprot</a>
<a href="#">P07437</a>	TUBB	Tubulin beta chain OS=Homo sapie	50095	85	22(7)	7(4)	0.38	20%	<a href="#">P07437_uniprot</a>
<a href="#">Q00839</a>	HNRNPU	Heterogeneous nuclear ribonucleop	91269	83	5(3)	3(2)	0.07	4%	<a href="#">Q00839_uniprot</a>
<a href="#">Q9H0U4</a>	RAB1B	Ras-related protein Rab-1B OS=Ho	22328	83	7(3)	2(1)	0.15	9%	<a href="#">Q9H0U4_uniprot</a>
<a href="#">P20930</a>	FLG	Filaggrin OS=Homo sapiens OX=9(	435036	80	8(3)	4(2)	0.02	1%	<a href="#">P20930_uniprot</a>
<a href="#">Q16643</a>	DBN1	Drebrin OS=Homo sapiens OX=96(	71842	79	7(2)	5(2)	0.09	9%	<a href="#">Q16643_uniprot</a>
<a href="#">O43390</a>	HNRNPR	Heterogeneous nuclear ribonucleop	71184	76	2(2)	1(1)	0.05	1%	<a href="#">O43390_uniprot</a>
<a href="#">P07737</a>	PFN1	Profilin-1 OS=Homo sapiens OX=9	15216	76	5(3)	3(2)	0.50	31%	<a href="#">P07737_uniprot</a>
<a href="#">P13489</a>	RNH1	Ribonuclease inhibitor OS=Homo s:	51766	75	6(3)	3(2)	0.13	8%	<a href="#">P13489_uniprot</a>
<a href="#">P06576</a>	ATP5F1B	ATP synthase subunit beta, mitoch	56525	73	13(4)	8(3)	0.19	21%	<a href="#">P06576_uniprot</a>
<a href="#">P19971</a>	TYMP	Thymidine phosphorylase OS=Hom	50323	73	2(2)	2(2)	0.14	6%	<a href="#">P19971_uniprot</a>
<a href="#">P02042</a>	HBD	Hemoglobin subunit delta OS=Hom	16159	73	6(4)	2(1)	0.21	12%	<a href="#">P02042_uniprot</a>
<a href="#">O14950</a>	MYL12B	Myosin regulatory light chain 12B	19824	72	5(3)	2(2)	0.37	12%	<a href="#">O14950_uniprot</a>
<a href="#">P60842</a>	EIF4A1	Eukaryotic initiation factor 4A-I	OS46353	71	9(4)	5(2)	0.15	15%	<a href="#">P60842_uniprot</a>
<a href="#">O75369</a>	FLNB	Filamin-B OS=Homo sapiens OX=9	280157	70	21(2)	17(2)	0.02	9%	<a href="#">O75369_uniprot</a>
<a href="#">P35268</a>	RPL22	60S ribosomal protein L22 OS=Ho	14835	68	3(2)	2(2)	0.51	18%	<a href="#">P35268_uniprot</a>
<a href="#">O60437</a>	PPL	Periplakin OS=Homo sapiens OX=9	205193	66	20(3)	16(3)	0.05	10%	<a href="#">O60437_uniprot</a>
<a href="#">Q9C075</a>	KRT23	Keratin, type I cytoskeletal 23	OS148272	66	4(1)	4(1)	0.14	12%	<a href="#">Q9C075_uniprot</a>
<a href="#">Q96G03</a>	PGM2	Phosphoglucomutase-2 OS=Homo s	68754	65	3(2)	3(2)	0.10	6%	<a href="#">Q96G03_uniprot</a>
<a href="#">P23246</a>	SFPQ	Splicing factor, proline- and glut	76216	64	6(4)	4(3)	0.13	5%	<a href="#">P23246_uniprot</a>
<a href="#">P61978</a>	HNRNPK	Heterogeneous nuclear ribonucleop	51230	64	3(2)	3(2)	0.13	8%	<a href="#">P61978_uniprot</a>
<a href="#">P25705</a>	ATP5F1A	ATP synthase subunit alpha, mitoch	59828	63	11(4)	7(4)	0.24	14%	<a href="#">P25705_uniprot</a>
<a href="#">P40121</a>	CAPG	Macrophage-capping protein OS=H	38760	63	5(2)	3(2)	0.18	10%	<a href="#">P40121_uniprot</a>
<a href="#">P18669</a>	PGAM1	Phosphoglycerate mutase 1 OS=Ho	28900	62	8(2)	5(2)	0.24	28%	<a href="#">P18669_uniprot</a>
<a href="#">P01859</a>	IGHG2	Immunoglobulin heavy constant ga	36505	61	9(3)	4(3)	0.30	12%	<a href="#">P01859_uniprot</a>
<a href="#">P04843</a>	RPN1	Dolichyl-diphosphooligosaccharide	68641	61	2(1)	2(1)	0.05	4%	<a href="#">P04843_uniprot</a>
<a href="#">Q9UBH0</a>	IL36RN	Interleukin-36 receptor antagonist	p17237	61	3(3)	2(2)	0.43	8%	<a href="#">Q9UBH0_uniprot</a>
<a href="#">Q92817</a>	EVPL	Envoplakin OS=Homo sapiens OX=	232774	60	20(3)	14(3)	0.04	9%	<a href="#">Q92817_uniprot</a>
<a href="#">P49755</a>	TMED10	Transmembrane emp24 domain-con	25131	60	2(1)	2(1)	0.13	10%	<a href="#">P49755_uniprot</a>
<a href="#">Q9Y281</a>	CFL2	Cofilin-2 OS=Homo sapiens OX=9(	18839	59	2(2)	1(1)	0.18	6%	<a href="#">Q9Y281_uniprot</a>
<a href="#">P61626</a>	LYZ	Lysozyme C OS=Homo sapiens OX	16982	59	3(2)	1(1)	0.20	8%	<a href="#">P61626_uniprot</a>
<a href="#">P16402</a>	HIST1H1I	Histone H1.3 OS=Homo sapiens O	22336	58	45(2)	3(1)	0.32	14%	<a href="#">P16402_uniprot</a>

<a href="#">P26038</a>	MSN	Moesin OS=Homo sapiens OX=960 67892	58	10(6)	6(4)	0.21	9%	<a href="#">P26038_uniprot</a>
<a href="#">P69905</a>	HBA1	Hemoglobin subunit alpha OS=Hon 15305	57	5(4)	3(3)	1.23	23%	<a href="#">P69905_uniprot</a>
<a href="#">P28072</a>	PSMB6	Proteasome subunit beta type-6 OS= 25570	56	1(1)	1(1)	0.13	4%	<a href="#">P28072_uniprot</a>
<a href="#">Q9P2E9</a>	RRBP1	Ribosome-binding protein 1 OS=Hc 152780	55	10(4)	8(4)	0.09	8%	<a href="#">Q9P2E9_uniprot</a>
<a href="#">P15880</a>	RPS2	40S ribosomal protein S2 OS=Hom 31590	55	3(1)	3(1)	0.11	10%	<a href="#">P15880_uniprot</a>
<a href="#">Q96FJ2</a>	DYNLL2	Dynein light chain 2, cytoplasmic O 10457	55	1(1)	1(1)	0.33	12%	<a href="#">Q96FJ2_uniprot</a>
<a href="#">P02675</a>	FGB	Fibrinogen beta chain OS=Homo sa 56577	54	5(2)	5(2)	0.12	15%	<a href="#">P02675_uniprot</a>
<a href="#">P31943</a>	HNRNPH	Heterogeneous nuclear ribonucleop 49484	54	3(3)	2(2)	0.21	5%	<a href="#">P31943_uniprot</a>
<a href="#">Q08211</a>	DHX9	ATP-dependent RNA helicase A O 142181	54	13(1)	11(1)	0.02	11%	<a href="#">Q08211_uniprot</a>
<a href="#">Q8N1N4</a>	KRT78	Keratin, type II cytoskeletal 78 OS= 57629	54	7(2)	5(2)	0.12	12%	<a href="#">Q8N1N4_uniprot</a>
<a href="#">P60866</a>	RPS20	40S ribosomal protein S20 OS=Hon 13478	53	4(2)	3(2)	0.57	26%	<a href="#">P60866_uniprot</a>
<a href="#">Q99436</a>	PSMB7	Proteasome subunit beta type-7 OS= 30288	52	1(1)	1(1)	0.11	3%	<a href="#">Q99436_uniprot</a>
<a href="#">O00159</a>	MYO1C	Unconventional myosin-Ic OS=Hon 122461	52	11(2)	7(2)	0.05	8%	<a href="#">O00159_uniprot</a>
<a href="#">P00403</a>	MT-CO2	Cytochrome c oxidase subunit 2 OS 25719	51	2(2)	1(1)	0.13	4%	<a href="#">P00403_uniprot</a>
<a href="#">P52272</a>	HNRNPM	Heterogeneous nuclear ribonucleop 77749	51	6(3)	4(3)	0.13	5%	<a href="#">P52272_uniprot</a>
<a href="#">P32119</a>	PRDX2	Peroxiredoxin-2 OS=Homo sapiens 22049	51	3(1)	3(1)	0.15	18%	<a href="#">P32119_uniprot</a>
<a href="#">P01040</a>	CSTA	Cystatin-A OS=Homo sapiens OX= 11000	50	2(1)	1(1)	0.31	18%	<a href="#">P01040_uniprot</a>
<a href="#">P30041</a>	PRDX6	Peroxiredoxin-6 OS=Homo sapiens 25133	50	5(3)	3(1)	0.13	16%	<a href="#">P30041_uniprot</a>
<a href="#">O15144</a>	ARPC2	Actin-related protein 2/3 complex s 34426	50	4(1)	4(1)	0.10	13%	<a href="#">O15144_uniprot</a>
<a href="#">Q9H1E1</a>	RNASE7	Ribonuclease 7 OS=Homo sapiens 17921	50	2(1)	1(1)	0.19	8%	<a href="#">Q9H1E1_uniprot</a>
<a href="#">P51149</a>	RAB7A	Ras-related protein Rab-7a OS=Hor 23760	50	7(2)	5(2)	0.30	30%	<a href="#">P51149_uniprot</a>
<a href="#">P62913</a>	RPL11	60S ribosomal protein L11 OS=Hor 20468	49	4(2)	2(1)	0.16	14%	<a href="#">P62913_uniprot</a>
<a href="#">P42357</a>	HAL	Histidine ammonia-lyase OS=Homc 73336	49	5(2)	3(2)	0.09	6%	<a href="#">P42357_uniprot</a>
<a href="#">P14174</a>	MIF	Macrophage migration inhibitory fa 12639	49	2(1)	1(1)	0.27	9%	<a href="#">P14174_uniprot</a>
<a href="#">Q8WVV4</a>	POF1B	Protein POF1B OS=Homo sapiens 68878	49	9(3)	7(3)	0.15	12%	<a href="#">Q8WVV4_uniprot</a>
<a href="#">P29401</a>	TKT	Transketolase OS=Homo sapiens O. 68519	48	5(1)	3(1)	0.05	7%	<a href="#">P29401_uniprot</a>
<a href="#">P16050</a>	ALOX15	Arachidonate 15-lipoxygenase OS= 75498	48	4(3)	3(3)	0.14	6%	<a href="#">P16050_uniprot</a>
<a href="#">P22314</a>	UBA1	Ubiquitin-like modifier-activating e 118858	48	2(1)	2(1)	0.03	2%	<a href="#">P22314_uniprot</a>
<a href="#">P07108</a>	DBI	Acyl-CoA-binding protein OS=Hon 10038	48	9(2)	5(2)	0.82	64%	<a href="#">P07108_uniprot</a>
<a href="#">P17931</a>	LGALS3	Galectin-3 OS=Homo sapiens OX= 26193	48	5(3)	4(2)	0.43	19%	<a href="#">P17931_uniprot</a>
<a href="#">P21333</a>	FLNA	Filamin-A OS=Homo sapiens OX= 283301	48	15(1)	12(1)	0.02	6%	<a href="#">P21333_uniprot</a>
<a href="#">Q08188</a>	TGM3	Protein-glutamine gamma-glutamylt 76926	48	3(1)	3(1)	0.04	4%	<a href="#">Q08188_uniprot</a>
<a href="#">P14625</a>	HSP90B1	Endoplasmic reticulum chaperone O 92696	47	4(2)	3(2)	0.07	4%	<a href="#">P14625_uniprot</a>
<a href="#">P00352</a>	ALDH1A1	Retinal dehydrogenase 1 OS=Homo 55454	46	3(1)	3(1)	0.06	9%	<a href="#">P00352_uniprot</a>

<a href="#">P62241</a>	RPS8	40S ribosomal protein S8 OS=Homo	24475	45	6(2)	4(2)	0.29	25%	<a href="#">P62241_uniprot</a>
<a href="#">P18085</a>	ARF4	ADP-ribosylation factor 4 OS=Homo	20612	45	3(1)	1(1)	0.16	6%	<a href="#">P18085_uniprot</a>
<a href="#">P51659</a>	HSD17B4	Peroxisomal multifunctional enzyme	80092	45	2(1)	2(1)	0.04	3%	<a href="#">P51659_uniprot</a>
<a href="#">P04040</a>	CAT	Catalase OS=Homo sapiens OX=96	59947	45	2(1)	2(1)	0.05	4%	<a href="#">P04040_uniprot</a>
<a href="#">P52907</a>	CAPZA1	F-actin-capping protein subunit alpha	33073	45	5(1)	3(1)	0.10	13%	<a href="#">P52907_uniprot</a>
<a href="#">P62249</a>	RPS16	40S ribosomal protein S16 OS=Homo	16549	45	3(2)	1(1)	0.20	6%	<a href="#">P62249_uniprot</a>
<a href="#">Q8WWI1</a>	LMO7	LIM domain only protein 7 OS=Homo	194002	44	8(1)	5(1)	0.02	3%	<a href="#">Q8WWI1_uniprot</a>
<a href="#">P06748</a>	NPM1	Nucleophosmin OS=Homo sapiens	32726	44	2(1)	1(1)	0.10	4%	<a href="#">P06748_uniprot</a>
<a href="#">P04632</a>	CAPNS1	Calpain small subunit 1 OS=Homo	28469	43	1(1)	1(1)	0.12	5%	<a href="#">P04632_uniprot</a>
<a href="#">Q15907</a>	RAB11B	Ras-related protein Rab-11B OS=Homo	24588	42	2(2)	1(1)	0.14	5%	<a href="#">Q15907_uniprot</a>
<a href="#">P51572</a>	BCAP31	B-cell receptor-associated protein 3	28031	42	3(1)	3(1)	0.12	13%	<a href="#">P51572_uniprot</a>
<a href="#">Q6WCQ1</a>	MPRIIP	Myosin phosphatase Rho-interacting	117260	42	18(2)	16(2)	0.12	22%	<a href="#">Q6WCQ1_uniprot</a>
<a href="#">P47897</a>	QARS	Glutamine--tRNA ligase OS=Homo	88655	42	1(1)	1(1)	0.04	1%	<a href="#">P47897_uniprot</a>
<a href="#">P24534</a>	EEF1B2	Elongation factor 1-beta OS=Homo	24919	42	4(2)	3(2)	0.29	16%	<a href="#">P24534_uniprot</a>
<a href="#">P40763</a>	STAT3	Signal transducer and activator of tr	88810	42	4(2)	4(2)	0.08	8%	<a href="#">P40763_uniprot</a>
<a href="#">P11940</a>	PABPC1	Polyadenylate-binding protein 1 OS	70854	41	4(2)	3(1)	0.05	6%	<a href="#">P11940_uniprot</a>
<a href="#">P31930</a>	UQCRC1	Cytochrome b-c1 complex subunit	153297	41	3(1)	3(1)	0.06	6%	<a href="#">P31930_uniprot</a>
<a href="#">P62857</a>	RPS28	40S ribosomal protein S28 OS=Homo	7893	41	4(1)	2(1)	0.45	30%	<a href="#">P62857_uniprot</a>
<a href="#">Q6ZVX7</a>	NCCRP1	F-box only protein 50 OS=Homo sa	30942	40	2(1)	2(1)	0.11	6%	<a href="#">Q6ZVX7_uniprot</a>
<a href="#">Q07065</a>	CKAP4	Cytoskeleton-associated protein 4	66097	40	11(2)	11(2)	0.16	24%	<a href="#">Q07065_uniprot</a>
<a href="#">P26641</a>	EEF1G	Elongation factor 1-gamma OS=Homo	50429	40	4(2)	2(2)	0.14	5%	<a href="#">P26641_uniprot</a>
<a href="#">P50914</a>	RPL14	60S ribosomal protein L14 OS=Homo	23531	40	2(1)	1(1)	0.14	5%	<a href="#">P50914_uniprot</a>
<a href="#">P29373</a>	CRABP2	Cellular retinoic acid-binding protei	15854	39	4(1)	2(1)	0.21	13%	<a href="#">P29373_uniprot</a>
<a href="#">O15145</a>	ARPC3	Actin-related protein 2/3 complex s	20761	39	2(1)	1(1)	0.16	6%	<a href="#">O15145_uniprot</a>
<a href="#">P22735</a>	TGM1	Protein-glutamine gamma-glutamyl t	90529	39	9(1)	6(1)	0.04	9%	<a href="#">P22735_uniprot</a>
<a href="#">P62269</a>	RPS18	40S ribosomal protein S18 OS=Homo	17708	39	2(1)	2(1)	0.19	13%	<a href="#">P62269_uniprot</a>
<a href="#">Q8NHW5</a>	RPLP0P6	60S acidic ribosomal protein P0-like	34514	38	2(1)	2(1)	0.10	5%	<a href="#">Q8NHW5_uniprot</a>
<a href="#">P19338</a>	NCL	Nucleolin OS=Homo sapiens OX=9	76625	38	1(1)	1(1)	0.04	1%	<a href="#">P19338_uniprot</a>
<a href="#">Q02878</a>	RPL6	60S ribosomal protein L6 OS=Homo	32765	38	2(1)	2(1)	0.10	7%	<a href="#">Q02878_uniprot</a>
<a href="#">P38646</a>	HSPA9	Stress-70 protein, mitochondrial OS	73920	38	7(1)	6(1)	0.04	11%	<a href="#">P38646_uniprot</a>
<a href="#">P30050</a>	RPL12	60S ribosomal protein L12 OS=Homo	17979	38	1(1)	1(1)	0.19	5%	<a href="#">P30050_uniprot</a>
<a href="#">P22392</a>	NME2	Nucleoside diphosphate kinase B	17401	37	3(2)	2(2)	0.43	17%	<a href="#">P22392_uniprot</a>
<a href="#">P47756</a>	CAPZB	F-actin-capping protein subunit beta	31616	37	1(1)	1(1)	0.11	3%	<a href="#">P47756_uniprot</a>
<a href="#">P45974</a>	USP5	Ubiquitin carboxyl-terminal hydroly	96638	37	3(1)	3(1)	0.03	3%	<a href="#">P45974_uniprot</a>

<a href="#">P08865</a>	RPSA	40S ribosomal protein SA OS=Hom	32947	37	4(1)	3(1)	0.10	8%	<a href="#">P08865_uniprot</a>
<a href="#">P18124</a>	RPL7	60S ribosomal protein L7 OS=Hom	29264	37	7(2)	4(2)	0.38	20%	<a href="#">P18124_uniprot</a>
<a href="#">P62917</a>	RPL8	60S ribosomal protein L8 OS=Hom	28235	36	1(1)	1(1)	0.12	6%	<a href="#">P62917_uniprot</a>
<a href="#">Q9BUF5</a>	TUBB6	Tubulin beta-6 chain OS=Homo sap	50281	36	10(2)	3(2)	0.14	8%	<a href="#">Q9BUF5_uniprot</a>
<a href="#">P06744</a>	GPI	Glucose-6-phosphate isomerase OS=	63335	36	5(2)	4(2)	0.11	10%	<a href="#">P06744_uniprot</a>
<a href="#">P45880</a>	VDAC2	Voltage-dependent anion-selective c	32060	35	4(2)	3(2)	0.22	11%	<a href="#">P45880_uniprot</a>
<a href="#">Q08554</a>	DSC1	Desmocollin-1 OS=Homo sapiens C	101406	35	4(1)	4(1)	0.03	6%	<a href="#">Q08554_uniprot</a>
<a href="#">P13796</a>	LCP1	Plastin-2 OS=Homo sapiens OX=9c	70814	35	7(2)	5(2)	0.09	11%	<a href="#">P13796_uniprot</a>
<a href="#">Q13867</a>	BLMH	Bleomycin hydrolase OS=Homo sap	53155	35	5(1)	3(1)	0.06	9%	<a href="#">Q13867_uniprot</a>
<a href="#">A0A0B4J1</a>	IGHV3-74	Immunoglobulin heavy variable 3-7	13002	35	1(1)	1(1)	0.26	9%	<a href="#">A0A0B4J1X5_uniprot</a>
<a href="#">P14735</a>	IDE	Insulin-degrading enzyme OS=Hom	118692	35	11(1)	11(1)	0.06	13%	<a href="#">P14735_uniprot</a>
<a href="#">Q96QA5</a>	GSDMA	Gasdermin-A OS=Homo sapiens O	49619	35	3(1)	3(1)	0.07	8%	<a href="#">Q96QA5_uniprot</a>
<a href="#">Q95197</a>	RTN3	Reticulon-3 OS=Homo sapiens OX=	113169	35	2(1)	2(1)	0.03	2%	<a href="#">Q95197_uniprot</a>
<a href="#">P31949</a>	S100A11	Protein S100-A11 OS=Homo sapier	11847	35	3(2)	1(1)	0.29	8%	<a href="#">P31949_uniprot</a>
<a href="#">P08133</a>	ANXA6	Annexin A6 OS=Homo sapiens OX	76168	34	10(2)	9(2)	0.09	13%	<a href="#">P08133_uniprot</a>
<a href="#">Q13045</a>	FLII	Protein flightless-1 homolog OS=H	146142	34	9(1)	8(1)	0.02	6%	<a href="#">Q13045_uniprot</a>
<a href="#">Q01469</a>	FABP5	Fatty acid-binding protein, epiderm	15497	34	1(1)	1(1)	0.22	8%	<a href="#">Q01469_uniprot</a>
<a href="#">P60660</a>	MYL6	Myosin light polypeptide 6 OS=Hor	17090	34	4(1)	3(1)	0.43	23%	<a href="#">P60660_uniprot</a>
<a href="#">Q9NZH8</a>	IL36G	Interleukin-36 gamma OS=Homo sa	18937	34	3(1)	2(1)	0.18	12%	<a href="#">Q9NZH8_uniprot</a>
<a href="#">P62851</a>	RPS25	40S ribosomal protein S25 OS=Hon	13791	33	1(1)	1(1)	0.25	8%	<a href="#">P62851_uniprot</a>
<a href="#">P60900</a>	PSMA6	Proteasome subunit alpha type-6	OS27838	33	2(1)	2(1)	0.12	10%	<a href="#">P60900_uniprot</a>
<a href="#">Q9UJ70</a>	NAGK	N-acetyl-D-glucosamine kinase OS=	37694	33	1(1)	1(1)	0.09	3%	<a href="#">Q9UJ70_uniprot</a>
<a href="#">Q14203</a>	DCTN1	Dynactin subunit 1 OS=Homo sapie	142348	33	2(2)	2(2)	0.05	1%	<a href="#">Q14203_uniprot</a>
<a href="#">P07910</a>	HNRNPC	Heterogeneous nuclear ribonucleop	33707	32	4(2)	3(2)	0.21	10%	<a href="#">P07910_uniprot</a>
<a href="#">P30101</a>	PDIA3	Protein disulfide-isomerase A3 OS=	57146	32	6(1)	6(1)	0.06	14%	<a href="#">P30101_uniprot</a>
<a href="#">P47914</a>	RPL29	60S ribosomal protein L29 OS=Hor	17798	32	2(1)	2(1)	0.19	17%	<a href="#">P47914_uniprot</a>
<a href="#">P07996</a>	THBS1	Thrombospondin-1 OS=Homo sapie	133291	32	4(1)	4(1)	0.05	4%	<a href="#">P07996_uniprot</a>
<a href="#">P16401</a>	HIST1H1E	Histone H1.5 OS=Homo sapiens O	22566	32	2(1)	1(1)	0.15	4%	<a href="#">P16401_uniprot</a>
<a href="#">Q15008</a>	PSMD6	26S proteasome non-ATPase regula	45787	31	2(1)	2(1)	0.07	6%	<a href="#">Q15008_uniprot</a>
<a href="#">P27797</a>	CALR	Calreticulin OS=Homo sapiens OX=	48283	31	7(1)	3(1)	0.07	12%	<a href="#">P27797_uniprot</a>
<a href="#">P62263</a>	RPS14	40S ribosomal protein S14 OS=Hon	16434	31	1(1)	1(1)	0.21	8%	<a href="#">P62263_uniprot</a>
<a href="#">P0CG04</a>	IGLC1	Immunoglobulin lambda constant 1	11512	31	2(1)	2(1)	0.30	32%	<a href="#">P0CG04_uniprot</a>
<a href="#">P61160</a>	ACTR2	Actin-related protein 2 OS=Homo s	45017	30	3(1)	3(1)	0.07	9%	<a href="#">P61160_uniprot</a>
<a href="#">Q9Y6M1</a>	IGF2BP2	Insulin-like growth factor 2 mRNA-	66195	30	1(1)	1(1)	0.05	2%	<a href="#">Q9Y6M1_uniprot</a>

<a href="#">P22695</a>	UQCRC2	Cytochrome b-c1 complex subunit 248584	30	1(1)	1(1)	0.07	3%	<a href="#">P22695_uniprot</a>
<a href="#">P52209</a>	PGD	6-phosphogluconate dehydrogenase.53619	29	2(1)	2(1)	0.13	6%	<a href="#">P52209_uniprot</a>
<a href="#">Q16658</a>	FSCN1	Fascin OS=Homo sapiens OX=960655123	29	1(1)	1(1)	0.06	2%	<a href="#">Q16658_uniprot</a>
<a href="#">O15231</a>	ZNF185	Zinc finger protein 185 OS=Homo s74393	29	4(1)	4(1)	0.04	9%	<a href="#">O15231_uniprot</a>
<a href="#">P07305</a>	H1F0	Histone H1.0 OS=Homo sapiens O220850	29	1(1)	1(1)	0.16	6%	<a href="#">P07305_uniprot</a>
<a href="#">P00747</a>	PLG	Plasminogen OS=Homo sapiens OX93247	29	1(1)	1(1)	0.04	1%	<a href="#">P00747_uniprot</a>
<a href="#">Q9UQ80</a>	PA2G4	Proliferation-associated protein 2G444101	29	1(1)	1(1)	0.07	2%	<a href="#">Q9UQ80_uniprot</a>
<a href="#">Q9H2D6</a>	TRIOBP	TRIO and F-actin-binding protein O264125	28	3(1)	3(1)	0.01	1%	<a href="#">Q9H2D6_uniprot</a>
<a href="#">P52565</a>	ARHGDI1	Rho GDP-dissociation inhibitor 1 O23250	28	2(1)	1(1)	0.14	7%	<a href="#">P52565_uniprot</a>
<a href="#">P22626</a>	HNRNPA1	Heterogeneous nuclear ribonucleoprotein 37464	28	2(1)	2(1)	0.09	4%	<a href="#">P22626_uniprot</a>
<a href="#">P49862</a>	KLK7	Kallikrein-7 OS=Homo sapiens OX28191	28	3(1)	2(1)	0.12	9%	<a href="#">P49862_uniprot</a>
<a href="#">P19367</a>	HK1	Hexokinase-1 OS=Homo sapiens O103561	28	4(1)	4(1)	0.03	4%	<a href="#">P19367_uniprot</a>
<a href="#">Q6NXT2</a>	H3F3C	Histone H3.3C OS=Homo sapiens C15318	28	1(1)	1(1)	0.22	5%	<a href="#">Q6NXT2_uniprot</a>
<a href="#">Q14134</a>	TRIM29	Tripartite motif-containing protein 266478	28	9(2)	4(2)	0.10	8%	<a href="#">Q14134_uniprot</a>
<a href="#">P0C0S8</a>	HIST1H2A	Histone H2A type 1 OS=Homo sapiens O14083	28	5(1)	2(1)	0.24	21%	<a href="#">P0C0S8_uniprot</a>
<a href="#">P23526</a>	AHCY	Adenosylhomocysteinase OS=Homo sapiens O48255	27	2(1)	2(1)	0.07	5%	<a href="#">P23526_uniprot</a>
<a href="#">P59998</a>	ARPC4	Actin-related protein 2/3 complex subunit 19768	27	3(1)	1(1)	0.17	6%	<a href="#">P59998_uniprot</a>
<a href="#">P46940</a>	IQGAP1	Ras GTPase-activating-like protein 189761	27	7(1)	6(1)	0.02	4%	<a href="#">P46940_uniprot</a>
<a href="#">P51648</a>	ALDH3A2	Fatty aldehyde dehydrogenase OS=Homo sapiens O155269	27	2(1)	1(1)	0.06	2%	<a href="#">P51648_uniprot</a>
<a href="#">P80188</a>	LCN2	Neutrophil gelatinase-associated lipocalin 22745	26	2(1)	1(1)	0.15	5%	<a href="#">P80188_uniprot</a>
<a href="#">P55084</a>	HADHB	Trifunctional enzyme subunit beta, mitochondrial 151547	26	3(1)	2(1)	0.06	4%	<a href="#">P55084_uniprot</a>
<a href="#">Q96F07</a>	CYFIP2	Cytoplasmic FMR1-interacting protein 150298	25	5(1)	3(1)	0.02	2%	<a href="#">Q96F07_uniprot</a>
<a href="#">O15143</a>	ARPC1B	Actin-related protein 2/3 complex subunit 41722	25	1(1)	1(1)	0.08	4%	<a href="#">O15143_uniprot</a>
<a href="#">P05141</a>	SLC25A5	ADP/ATP translocase 2 OS=Homo sapiens O33059	25	8(1)	5(1)	0.10	13%	<a href="#">P05141_uniprot</a>
<a href="#">A0A0C4D</a>	IGKV3D-7	Immunoglobulin kappa variable 3D-13254	25	1(1)	1(1)	0.26	7%	<a href="#">A0A0C4DH55_uniprot</a>
<a href="#">P30153</a>	PPP2R1A	Serine/threonine-protein phosphatase 2B subunit 66065	25	2(1)	2(1)	0.05	5%	<a href="#">P30153_uniprot</a>
<a href="#">P62424</a>	RPL7A	60S ribosomal protein L7a OS=Homo sapiens O30148	24	3(1)	3(1)	0.11	13%	<a href="#">P62424_uniprot</a>
<a href="#">Q14574</a>	DSC3	Desmocollin-3 OS=Homo sapiens C101218	24	8(1)	6(1)	0.03	9%	<a href="#">Q14574_uniprot</a>
<a href="#">P36578</a>	RPL4	60S ribosomal protein L4 OS=Homo sapiens O47953	24	3(1)	2(1)	0.07	6%	<a href="#">P36578_uniprot</a>
<a href="#">P07858</a>	CTSB	Cathepsin B OS=Homo sapiens OX38766	24	2(1)	2(1)	0.09	6%	<a href="#">P07858_uniprot</a>
<a href="#">P07384</a>	CAPN1	Calpain-1 catalytic subunit OS=Homo sapiens O82465	24	2(0)	2(0)	0.04	3%	<a href="#">P07384_uniprot</a>
<a href="#">P09601</a>	HMOX1	Heme oxygenase 1 OS=Homo sapiens O32798	24	3(1)	3(1)	0.10	13%	<a href="#">P09601_uniprot</a>
<a href="#">P51991</a>	HNRNPA1	Heterogeneous nuclear ribonucleoprotein 39799	23	3(1)	3(1)	0.08	10%	<a href="#">P51991_uniprot</a>
<a href="#">O00487</a>	PSMD14	26S proteasome non-ATPase regulatory subunit 14 34726	23	1(1)	1(1)	0.10	4%	<a href="#">O00487_uniprot</a>

<a href="#">Q01518</a>	CAP1	Adenylyl cyclase-associated protein 52325	23	3(1)	3(1)	0.06	6%	<a href="#">Q01518_uniprot</a>
<a href="#">Q9Y5Z4</a>	HEBP2	Heme-binding protein 2 OS=Homo 22861	23	1(1)	1(1)	0.15	6%	<a href="#">Q9Y5Z4_uniprot</a>
<a href="#">P00491</a>	PNP	Purine nucleoside phosphorylase O6 32325	21	9(2)	6(2)	0.34	28%	<a href="#">P00491_uniprot</a>
<a href="#">P40939</a>	HADHA	Trifunctional enzyme subunit alpha, 83688	21	1(0)	1(0)	0.04	1%	<a href="#">P40939_uniprot</a>
<a href="#">P25311</a>	AZGP1	Zinc-alpha-2-glycoprotein OS=Hori 34465	19	1(0)	1(0)	0.10	5%	<a href="#">P25311_uniprot</a>
<a href="#">P07814</a>	EPRS	Bifunctional glutamate/proline--tRN 172080	18	4(1)	3(1)	0.02	2%	<a href="#">P07814_uniprot</a>
<a href="#">P61019</a>	RAB2A	Ras-related protein Rab-2A OS=Ho 23702	17	3(0)	3(0)	0.14	19%	<a href="#">P61019_uniprot</a>
<a href="#">P21796</a>	VDAC1	Voltage-dependent anion-selective c 30868	17	5(0)	4(0)	0.11	19%	<a href="#">P21796_uniprot</a>
<a href="#">P63244</a>	RACK1	Receptor of activated protein C kina 35511	16	2(0)	2(0)	0.09	8%	<a href="#">P63244_uniprot</a>

**Table S3.** The differentially expressed proteins bound to TRIM25 identified by mass spectrometry.

Protein IDs	Majority protein IDs	Intensity IgG	Intensity TRIM25Ab	均一化		Fold Change FC(TRIM25Ab/IgG)	sig
				Intensity IgG	Intensity TRIM25Ab		
sp A4D161 F221A-FAM221A_HU	sp A4D161 F221A-FAM221A_HUMAN	0	13997000	0	1.23299E-05	#DIV/0!	up
sp O00299 CLIC1-CLIC1_HUMAN	sp O00299 CLIC1-CLIC1_HUMAN	0	6432300	0	5.66618E-06	#DIV/0!	up
sp O00425 IF2B3-IGF2BP3_HUM	sp O00425 IF2B3-IGF2BP3_HUMAN	0	109440000	0	9.64051E-05	#DIV/0!	up
sp O00560 SDCB1-SDCBP_HUMA	sp O00560 SDCB1-SDCBP_HUMAN	0	6306800	0	5.55563E-06	#DIV/0!	up
sp O00567 NOP56-NOP56_HUMA	sp O00567 NOP56-NOP56_HUMAN	0	12685000	0	1.11741E-05	#DIV/0!	up
sp O00622 CCN1-CCN1_HUMAN	sp O00622 CCN1-CCN1_HUMAN	0	15677000	0	1.38098E-05	#DIV/0!	up
sp O00767 ACOD-SCD_HUMAN	sp O00767 ACOD-SCD_HUMAN	0	2910700	0	2.56402E-06	#DIV/0!	up
sp O14579 COPE-COPE_HUMAN	sp O14579 COPE-COPE_HUMAN	0	27112000	0	2.38828E-05	#DIV/0!	up
sp O14908 GIPC1-GIPC1_HUMAN	sp O14908 GIPC1-GIPC1_HUMAN	0	36486000	0	3.21403E-05	#DIV/0!	up
sp O14974 MYPT1-PPP1R12A_HU	sp O14974 MYPT1-PPP1R12A_HUMAN	0	24373000	0	2.147E-05	#DIV/0!	up
sp O15460 P4HA2-P4HA2_HUMA	sp O15460 P4HA2-P4HA2_HUMAN	0	15796000	0	1.39146E-05	#DIV/0!	up
sp O15511 ARPC5-ARPC5_HUMA	sp O15511 ARPC5-ARPC5_HUMAN	0	43303000	0	3.81454E-05	#DIV/0!	up
sp O43143 DHX15-DHX15_HUM	sp O43143 DHX15-DHX15_HUMAN	0	10760000	0	9.47842E-06	#DIV/0!	up
sp O43175 SERA-PHGDH_HUMA	sp O43175 SERA-PHGDH_HUMAN	0	22078000	0	1.94484E-05	#DIV/0!	up
sp O43293 DAPK3-DAPK3_HUM	sp O43293 DAPK3-DAPK3_HUMAN	0	5205800	0	4.58576E-06	#DIV/0!	up
sp O43491 E41L2-EPB41L2_HUM	sp O43491 E41L2-EPB41L2_HUMAN	0	154430000	0	0.000136037	#DIV/0!	up
sp O43719 HTSF1-HTATSF1_HU	sp O43719 HTSF1-HTATSF1_HUMAN	0	133410000	0	0.00011752	#DIV/0!	up
sp O60506 HNRPQ-SYNCRIP_HU	sp O60506 HNRPQ-SYNCRIP_HUMAN	0	27702000	0	2.44025E-05	#DIV/0!	up
sp O60832 DKC1-DKC1_HUMAN	sp O60832 DKC1-DKC1_HUMAN	0	17051000	0	1.50201E-05	#DIV/0!	up
sp O75044 SRGP2-SRGAP2_HUM	sp O75044 SRGP2-SRGAP2_HUMAN;sp Q	0	3868200	0	3.40748E-06	#DIV/0!	up
sp O75083 WDR1-WDR1_HUMAN	sp O75083 WDR1-WDR1_HUMAN	0	64444000	0	5.67684E-05	#DIV/0!	up
sp O75533 SF3B1-SF3B1_HUMAN	sp O75533 SF3B1-SF3B1_HUMAN	0	942260000	0	0.000830032	#DIV/0!	up
sp O75592 MYCB2-MYCBP2_HU	sp O75592 MYCB2-MYCBP2_HUMAN	0	4025800	0	3.5463E-06	#DIV/0!	up
sp O75643 U520-SNRNP200_HUM	sp O75643 U520-SNRNP200_HUMAN	0	1847800	0	1.62772E-06	#DIV/0!	up
sp O75962 TRIO-TRIO_HUMAN;s	sp O75962 TRIO-TRIO_HUMAN;sp O60225	0	7053600	0	6.21348E-06	#DIV/0!	up
sp O76021 RL1D1-RSL1D1_HUM	sp O76021 RL1D1-RSL1D1_HUMAN	0	28415000	0	2.50306E-05	#DIV/0!	up
sp O94851 MICA2-MICAL2_HUM	sp O94851 MICA2-MICAL2_HUMAN	0	4772400	0	4.20398E-06	#DIV/0!	up
sp O94906 PRP6-PRPF6_HUMAN	sp O94906 PRP6-PRPF6_HUMAN	0	2011400	0	1.77183E-06	#DIV/0!	up
sp O94929 ABLM3-ABLM3_HUM	sp O94929 ABLM3-ABLM3_HUMAN	0	16611000	0	1.46325E-05	#DIV/0!	up
sp O95573 ACSL3-ACSL3_HUMA	sp O95573 ACSL3-ACSL3_HUMAN	0	26539000	0	2.33781E-05	#DIV/0!	up
sp O95749 GGPPS-GGPS1_HUMA	sp O95749 GGPPS-GGPS1_HUMAN	0	8497300	0	7.48522E-06	#DIV/0!	up
sp O95782 AP2A1-AP2A1_HUMA	sp O95782 AP2A1-AP2A1_HUMAN;sp O94	0	26914000	0	2.37084E-05	#DIV/0!	up
sp O95810 CAVN2-CAVIN2_HUM	sp O95810 CAVN2-CAVIN2_HUMAN	0	20466000	0	1.80284E-05	#DIV/0!	up
sp O95816 BAG2-BAG2_HUMAN	sp O95816 BAG2-BAG2_HUMAN	0	35221000	0	3.1026E-05	#DIV/0!	up
sp O95864 FADS2-FADS2_HUMA	sp O95864 FADS2-FADS2_HUMAN	0	53153000	0	4.68222E-05	#DIV/0!	up
sp P00367 DHE3-GLUD1_HUMAN	sp P00367 DHE3-GLUD1_HUMAN;sp P494	0	30396000	0	2.67757E-05	#DIV/0!	up
sp P01037 CYTN-CST1_HUMAN	sp P01037 CYTN-CST1_HUMAN	0	4311300	0	3.7978E-06	#DIV/0!	up
sp P02461 CO3A1-COL3A1_HUM	sp P02461 CO3A1-COL3A1_HUMAN;CON	0	7176100	0	6.32139E-06	#DIV/0!	up

sp P04156 PRIO-PRNP_HUMAN	sp P04156 PRIO-PRNP_HUMAN	0	4042600	0	3.5611E-06	#DIV/0!	up
sp P05141 ADT2-SLC25A5_HUMAN	sp P05141 ADT2-SLC25A5_HUMAN	0	26696000	0	2.35164E-05	#DIV/0!	up
sp P05386 RLA1-RPLP1_HUMAN	sp P05386 RLA1-RPLP1_HUMAN	0	18000000	0	1.58561E-05	#DIV/0!	up
sp P06748 NPM-NPM1_HUMAN	sp P06748 NPM-NPM1_HUMAN	0	108020000	0	9.51542E-05	#DIV/0!	up
sp P07195 LDHB-LDHB_HUMAN	sp P07195 LDHB-LDHB_HUMAN	0	38977000	0	3.43346E-05	#DIV/0!	up
sp P07737 PROF1-PFN1_HUMAN	sp P07737 PROF1-PFN1_HUMAN	0	4755500	0	4.18909E-06	#DIV/0!	up
sp P07910 HNRPC-HNRNPC_HUMAN	sp P07910 HNRPC-HNRNPC_HUMAN	0	22926000	0	2.01954E-05	#DIV/0!	up
sp P07996 TSP1-THBS1_HUMAN	sp P07996 TSP1-THBS1_HUMAN	0	18227000	0	1.60561E-05	#DIV/0!	up
sp P08195 4F2-SLC3A2_HUMAN	sp P08195 4F2-SLC3A2_HUMAN	0	5950700	0	5.24194E-06	#DIV/0!	up
sp P08237 PFKAM-PFKM_HUMAN	sp P08237 PFKAM-PFKM_HUMAN	0	5585800	0	4.9205E-06	#DIV/0!	up
sp P08579 RU2B-SNRPB2_HUMAN	sp P08579 RU2B-SNRPB2_HUMAN	0	9513300	0	8.38021E-06	#DIV/0!	up
sp P08708 RS17-RPS17_HUMAN	sp P08708 RS17-RPS17_HUMAN	0	200520000	0	0.000176637	#DIV/0!	up
sp P08754 GNAI3-GNAI3_HUMAN	sp P08754 GNAI3-GNAI3_HUMAN	0	22094000	0	1.94625E-05	#DIV/0!	up
sp P09382 LEG1-LGALS1_HUMAN	sp P09382 LEG1-LGALS1_HUMAN	0	129360000	0	0.000113953	#DIV/0!	up
sp P09661 RU2A-SNRPA1_HUMAN	sp P09661 RU2A-SNRPA1_HUMAN	0	73412000	0	6.46682E-05	#DIV/0!	up
sp P09936 UCHL1-UCHL1_HUMAN	sp P09936 UCHL1-UCHL1_HUMAN	0	5080700	0	4.47556E-06	#DIV/0!	up
sp P0CG39 POTEJ-POTEJ_HUMAN	sp P0CG39 POTEJ-POTEJ_HUMAN	0	10013000	0	8.8204E-06	#DIV/0!	up
sp P11047 LAMC1-LAMC1_HUMAN	sp P11047 LAMC1-LAMC1_HUMAN	0	3556000	0	3.13246E-06	#DIV/0!	up
sp P11387 TOP1-TOP1_HUMAN	sp P11387 TOP1-TOP1_HUMAN	0	27670000	0	2.43743E-05	#DIV/0!	up
sp P12110 CO6A2-COL6A2_HUMAN	sp P12110 CO6A2-COL6A2_HUMAN	0	68740000	0	6.05527E-05	#DIV/0!	up
sp P13010 XRCC5-XRCC5_HUMAN	sp P13010 XRCC5-XRCC5_HUMAN	0	123760000	0	0.000109019	#DIV/0!	up
sp P13489 RINI-RNH1_HUMAN	sp P13489 RINI-RNH1_HUMAN	0	13297000	0	1.17133E-05	#DIV/0!	up
sp P13674 P4HA1-P4HA1_HUMAN	sp P13674 P4HA1-P4HA1_HUMAN	0	67218000	0	5.9212E-05	#DIV/0!	up
sp P13797 PLST-PLS3_HUMAN	sp P13797 PLST-PLS3_HUMAN	0	4527400	0	3.98816E-06	#DIV/0!	up
sp P13987 CD59-CD59_HUMAN	sp P13987 CD59-CD59_HUMAN	0	102790000	0	9.05471E-05	#DIV/0!	up
sp P14649 MYL6B-MYL6B_HUMAN	sp P14649 MYL6B-MYL6B_HUMAN	0	82490000	0	7.2665E-05	#DIV/0!	up
sp P15144 AMPN-ANPEP_HUMAN	sp P15144 AMPN-ANPEP_HUMAN	0	55702000	0	4.90676E-05	#DIV/0!	up
sp P15259 PGAM2-PGAM2_HUMAN	sp P15259 PGAM2-PGAM2_HUMAN	0	2987100	0	2.63132E-06	#DIV/0!	up
sp P15880 RS2-RPS2_HUMAN	sp P15880 RS2-RPS2_HUMAN	0	104870000	0	9.23794E-05	#DIV/0!	up
sp P16070 CD44-CD44_HUMAN	sp P16070 CD44-CD44_HUMAN	0	19771000	0	1.74162E-05	#DIV/0!	up
sp P16520 GBB3-GNB3_HUMAN	sp P16520 GBB3-GNB3_HUMAN	0	13855000	0	1.22048E-05	#DIV/0!	up
sp P16615 AT2A2-ATP2A2_HUMAN	sp P16615 AT2A2-ATP2A2_HUMAN	0	4276400	0	3.76706E-06	#DIV/0!	up
sp P17302 CXA1-GJA1_HUMAN	sp P17302 CXA1-GJA1_HUMAN	0	11591000	0	1.02104E-05	#DIV/0!	up
sp P17987 TCPA-TCP1_HUMAN	sp P17987 TCPA-TCP1_HUMAN	0	14822000	0	1.30566E-05	#DIV/0!	up
sp P18077 RL35A-RPL35A_HUMAN	sp P18077 RL35A-RPL35A_HUMAN	0	29763000	0	2.62181E-05	#DIV/0!	up
sp P18206 VINC-VCL_HUMAN	sp P18206 VINC-VCL_HUMAN	0	9056300	0	7.97764E-06	#DIV/0!	up
sp P19474 RO52-TRIM21_HUMAN	sp P19474 RO52-TRIM21_HUMAN	0	17131000	0	1.50906E-05	#DIV/0!	up
sp P20908 CO5A1-COL5A1_HUMAN	sp P20908 CO5A1-COL5A1_HUMAN	0	15317000	0	1.34927E-05	#DIV/0!	up
sp P21980 TGM2-TGM2_HUMAN	sp P21980 TGM2-TGM2_HUMAN	0	89669000	0	7.89889E-05	#DIV/0!	up
sp P22087 FBRL-FBL_HUMAN	sp P22087 FBRL-FBL_HUMAN	0	67530000	0	5.94868E-05	#DIV/0!	up
sp P22314 UBA1-UBA1_HUMAN	sp P22314 UBA1-UBA1_HUMAN	0	9081500	0	7.99984E-06	#DIV/0!	up
sp P24593 IBP5-IGFBP5_HUMAN	sp P24593 IBP5-IGFBP5_HUMAN	0	5573100	0	4.90931E-06	#DIV/0!	up
sp P24821 TENA-TNC_HUMAN	sp P24821 TENA-TNC_HUMAN	0	4777500	0	4.20847E-06	#DIV/0!	up

sp P26038 MOES-MSN_HUMAN;sp P26038 MOES-MSN_HUMAN	0	22062000	0	1.94343E-05	#DIV/0!	up
sp P26599 PTBP1-PTBP1_HUMAN;sp P26599 PTBP1-PTBP1_HUMAN	0	11603000	0	1.0221E-05	#DIV/0!	up
sp P26641 EF1G-EEF1G_HUMAN;sp P26641 EF1G-EEF1G_HUMAN	0	7591600	0	6.6874E-06	#DIV/0!	up
sp P28288 ABCD3-ABCD3_HUMAN;sp P28288 ABCD3-ABCD3_HUMAN	0	7678600	0	6.76404E-06	#DIV/0!	up
sp P28289 TMOD1-TMOD1_HUMAN;sp P28289 TMOD1-TMOD1_HUMAN	0	84825000	0	7.47219E-05	#DIV/0!	up
sp P28290 ITPI2-ITPRID2_HUMAN;sp P28290 ITPI2-ITPRID2_HUMAN	0	21469000	0	1.89119E-05	#DIV/0!	up
sp P28300 LYOX-LOX_HUMAN;sp P28300 LYOX-LOX_HUMAN	0	20011000	0	1.76276E-05	#DIV/0!	up
sp P28799 GRN-GRN_HUMAN;sp P28799 GRN-GRN_HUMAN	0	16480000	0	1.45171E-05	#DIV/0!	up
sp P29401 TKT-TKT_HUMAN;sp P29401 TKT-TKT_HUMAN	0	8796500	0	7.74879E-06	#DIV/0!	up
sp P29536 LMOD1-LMOD1_HUMAN;sp P29536 LMOD1-LMOD1_HUMAN	0	62977000	0	5.54761E-05	#DIV/0!	up
sp P30038 AL4A1-ALDH4A1_HUMAN;sp P30038 AL4A1-ALDH4A1_HUMAN	0	8633400	0	7.60511E-06	#DIV/0!	up
sp P30041 PRDX6-PRDX6_HUMAN;sp P30041 PRDX6-PRDX6_HUMAN	0	20802000	0	1.83244E-05	#DIV/0!	up
sp P30101 PDIA3-PDIA3_HUMAN;sp P30101 PDIA3-PDIA3_HUMAN	0	20217000	0	1.7809E-05	#DIV/0!	up
sp P30305 MPIP2-CDC25B_HUMAN;sp P30305 MPIP2-CDC25B_HUMAN	0	31048000	0	2.735E-05	#DIV/0!	up
sp P32969 RL9-RPL9_HUMAN;sp P32969 RL9-RPL9_HUMAN	0	111660000	0	9.83607E-05	#DIV/0!	up
sp P35052 GPC1-GPC1_HUMAN;sp P35052 GPC1-GPC1_HUMAN	0	19852000	0	1.74875E-05	#DIV/0!	up
sp P35221 CTNA1-CTNNA1_HUMAN;sp P35221 CTNA1-CTNNA1_HUMAN	0	6362600	0	5.60478E-06	#DIV/0!	up
sp P35222 CTNB1-CTNNB1_HUMAN;sp P35222 CTNB1-CTNNB1_HUMAN	0	7775700	0	6.84957E-06	#DIV/0!	up
sp P35606 COPB2-COPB2_HUMAN;sp P35606 COPB2-COPB2_HUMAN	0	38942000	0	3.43038E-05	#DIV/0!	up
sp P35611 ADDA-ADD1_HUMAN;sp P35611 ADDA-ADD1_HUMAN	0	10786000	0	9.50133E-06	#DIV/0!	up
sp P35749 MYH11-MYH11_HUMAN;sp P35749 MYH11-MYH11_HUMAN	0	154930000	0	0.000136477	#DIV/0!	up
sp P36873 PPP1G-PPP1CC_HUMAN;sp P36873 PPP1G-PPP1CC_HUMAN	0	12006000	0	1.0576E-05	#DIV/0!	up
sp P38919 IF4A3-EIF4A3_HUMAN;sp P38919 IF4A3-EIF4A3_HUMAN	0	7394700	0	6.51395E-06	#DIV/0!	up
sp P39880 CUX1-CUX1_HUMAN;sp P39880 CUX1-CUX1_HUMAN;sp O1452	0	10368000	0	9.13311E-06	#DIV/0!	up
sp P40227 TCPZ-CCT6A_HUMAN;sp P40227 TCPZ-CCT6A_HUMAN	0	4408500	0	3.88342E-06	#DIV/0!	up
sp P41252 SYIC-IARS_HUMAN;sp P41252 SYIC-IARS_HUMAN	0	8515800	0	7.50152E-06	#DIV/0!	up
sp P42025 ACTY-ACR1B_HUMAN;sp P42025 ACTY-ACR1B_HUMAN	0	13512000	0	1.19026E-05	#DIV/0!	up
sp P42677 RS27-RPS27_HUMAN;sp P42677 RS27-RPS27_HUMAN	0	22634000	0	1.99382E-05	#DIV/0!	up
sp P43243 MATR3-MATR3_HUMAN;sp P43243 MATR3-MATR3_HUMAN	0	71751000	0	6.32051E-05	#DIV/0!	up
sp P46087 NOP2-NOP2_HUMAN;sp P46087 NOP2-NOP2_HUMAN	0	230660000	0	0.000203187	#DIV/0!	up
sp P46777 RL5-RPL5_HUMAN;sp P46777 RL5-RPL5_HUMAN	0	670660000	0	0.000590781	#DIV/0!	up
sp P46783 RS10-RPS10_HUMAN;sp P46783 RS10-RPS10_HUMAN;sp Q9NQ	0	87841000	0	7.73786E-05	#DIV/0!	up
sp P46939 UTRO-UTRN_HUMAN;sp P46939 UTRO-UTRN_HUMAN	0	13472000	0	1.18674E-05	#DIV/0!	up
sp P47914 RL29-RPL29_HUMAN;sp P47914 RL29-RPL29_HUMAN	0	65453000	0	5.76572E-05	#DIV/0!	up
sp P48651 PTSS1-PTDSS1_HUMAN;sp P48651 PTSS1-PTDSS1_HUMAN	0	25494000	0	2.24575E-05	#DIV/0!	up
sp P48681 NEST-NES_HUMAN;sp P48681 NEST-NES_HUMAN	0	12895000	0	1.13591E-05	#DIV/0!	up
sp P49207 RL34-RPL34_HUMAN;sp P49207 RL34-RPL34_HUMAN	0	65199000	0	5.74334E-05	#DIV/0!	up
sp P49368 TCPG-CCT3_HUMAN;sp P49368 TCPG-CCT3_HUMAN	0	15108000	0	1.33086E-05	#DIV/0!	up
sp P50395 GDIB-GDI2_HUMAN;sp P50395 GDIB-GDI2_HUMAN;sp P31150	0	4088700	0	3.60171E-06	#DIV/0!	up
sp P50402 EMD-EMD_HUMAN;sp P50402 EMD-EMD_HUMAN	0	22749000	0	2.00395E-05	#DIV/0!	up
sp P50479 PDLI4-PDLIM4_HUMAN;sp P50479 PDLI4-PDLIM4_HUMAN	0	10847000	0	9.55506E-06	#DIV/0!	up
sp P51114 FXR1-FXR1_HUMAN;sp P51114 FXR1-FXR1_HUMAN	0	94040000	0	8.28393E-05	#DIV/0!	up
sp P51116 FXR2-FXR2_HUMAN;sp P51116 FXR2-FXR2_HUMAN	0	21717000	0	1.91304E-05	#DIV/0!	up

sp P51571 SSRD-SSR4_HUMAN	sp P51571 SSRD-SSR4_HUMAN	0	2817500	0	2.48192E-06	#DIV/0!	up
sp P51991 ROA3-HNRNPA3_HUMAN	sp P51991 ROA3-HNRNPA3_HUMAN	0	4382100	0	3.86017E-06	#DIV/0!	up
sp P52209 6PGD-PGD_HUMAN	sp P52209 6PGD-PGD_HUMAN	0	24427000	0	2.15176E-05	#DIV/0!	up
sp P52943 CRIP2-CRIP2_HUMAN	sp P52943 CRIP2-CRIP2_HUMAN	0	5841100	0	5.14539E-06	#DIV/0!	up
sp P53007 TXTP-SLC25A1_HUMAN	sp P53007 TXTP-SLC25A1_HUMAN	0	72036000	0	6.34561E-05	#DIV/0!	up
sp P53396 ACLY-ACLY_HUMAN	sp P53396 ACLY-ACLY_HUMAN	0	61797000	0	5.44366E-05	#DIV/0!	up
sp P53618 COPB-COPB1_HUMAN	sp P53618 COPB-COPB1_HUMAN	0	17127000	0	1.50871E-05	#DIV/0!	up
sp P54289 CA2D1-CACNA2D1_HUMAN	sp P54289 CA2D1-CACNA2D1_HUMAN	0	15444000	0	1.36045E-05	#DIV/0!	up
sp P55209 NP1L1-NAP1L1_HUMAN	sp P55209 NP1L1-NAP1L1_HUMAN;sp Q9'	0	6787600	0	5.97916E-06	#DIV/0!	up
sp P55265 DSRAD-ADAR_HUMAN	sp P55265 DSRAD-ADAR_HUMAN	0	11046000	0	9.73036E-06	#DIV/0!	up
sp P55884 EIF3B-EIF3B_HUMAN	sp P55884 EIF3B-EIF3B_HUMAN	0	7451900	0	6.56434E-06	#DIV/0!	up
sp P56211 ARP19-ARPP19_HUMAN	sp P56211 ARP19-ARPP19_HUMAN	0	37399000	0	3.29446E-05	#DIV/0!	up
sp P61513 RL37A-RPL37A_HUMAN	sp P61513 RL37A-RPL37A_HUMAN	0	54460000	0	4.79735E-05	#DIV/0!	up
sp P61619 S61A1-SEC61A1_HUMAN	sp P61619 S61A1-SEC61A1_HUMAN	0	15002000	0	1.32152E-05	#DIV/0!	up
sp P61978 HNRPK-HNRNPK_HUMAN	sp P61978 HNRPK-HNRNPK_HUMAN	0	14808000	0	1.30443E-05	#DIV/0!	up
sp P61981 I433G-YWHAG_HUMAN	sp P61981 I433G-YWHAG_HUMAN	0	9707900	0	8.55164E-06	#DIV/0!	up
sp P62136 PP1A-PPP1CA_HUMAN	sp P62136 PP1A-PPP1CA_HUMAN	0	11932000	0	1.05108E-05	#DIV/0!	up
sp P62266 RS23-RPS23_HUMAN	sp P62266 RS23-RPS23_HUMAN	0	99378000	0	8.75415E-05	#DIV/0!	up
sp P62273 RS29-RPS29_HUMAN	sp P62273 RS29-RPS29_HUMAN	0	10291000	0	9.06528E-06	#DIV/0!	up
sp P62306 RUXF-SNRPF_HUMAN	sp P62306 RUXF-SNRPF_HUMAN	0	3619300	0	3.18822E-06	#DIV/0!	up
sp P62314 SMD1-SNRPD1_HUMAN	sp P62314 SMD1-SNRPD1_HUMAN	0	36657000	0	3.22909E-05	#DIV/0!	up
sp P62316 SMD2-SNRPD2_HUMAN	sp P62316 SMD2-SNRPD2_HUMAN	0	74886000	0	6.59667E-05	#DIV/0!	up
sp P62318 SMD3-SNRPD3_HUMAN	sp P62318 SMD3-SNRPD3_HUMAN	0	57389000	0	5.05537E-05	#DIV/0!	up
sp P62750 RL23A-RPL23A_HUMAN	sp P62750 RL23A-RPL23A_HUMAN	0	263060000	0	0.000231728	#DIV/0!	up
sp P62857 RS28-RPS28_HUMAN	sp P62857 RS28-RPS28_HUMAN	0	10059000	0	8.86092E-06	#DIV/0!	up
sp P62861 RS30-FAU_HUMAN	sp P62861 RS30-FAU_HUMAN	0	17634000	0	1.55337E-05	#DIV/0!	up
sp P62873 GBB1-GNB1_HUMAN	sp P62873 GBB1-GNB1_HUMAN	0	104160000	0	9.1754E-05	#DIV/0!	up
sp P62879 GBB2-GNB2_HUMAN	sp P62879 GBB2-GNB2_HUMAN;sp Q9HA	0	66720000	0	5.87733E-05	#DIV/0!	up
sp P62937 PPIA-PPIA_HUMAN	sp P62937 PPIA-PPIA_HUMAN	0	17644000	0	1.55425E-05	#DIV/0!	up
sp P63010 AP2B1-AP2B1_HUMAN	sp P63010 AP2B1-AP2B1_HUMAN;sp Q10'	0	20307000	0	1.78883E-05	#DIV/0!	up
sp P63096 GNAI1-GNAI1_HUMAN	sp P63096 GNAI1-GNAI1_HUMAN	0	13162000	0	1.15943E-05	#DIV/0!	up
sp P63162 RSMN-SNRPN_HUMAN	sp P63162 RSMN-SNRPN_HUMAN;sp P14'	0	24614000	0	2.16823E-05	#DIV/0!	up
sp P63167 DYL1-DYNLL1_HUMAN	sp P63167 DYL1-DYNLL1_HUMAN	0	12452000	0	1.09689E-05	#DIV/0!	up
sp P63173 RL38-RPL38_HUMAN	sp P63173 RL38-RPL38_HUMAN	0	14595000	0	1.28567E-05	#DIV/0!	up
sp P67809 YBOX1-YBX1_HUMAN	sp P67809 YBOX1-YBX1_HUMAN	0	101450000	0	8.93667E-05	#DIV/0!	up
sp P67870 CSK2B-CSNK2B_HUMAN	sp P67870 CSK2B-CSNK2B_HUMAN	0	8410600	0	7.40885E-06	#DIV/0!	up
sp P68032 ACTC-CTC1_HUMAN	sp P68032 ACTC-CTC1_HUMAN;sp P681	0	880830000	0	0.000775918	#DIV/0!	up
sp P78371 TCPB-CCT2_HUMAN	sp P78371 TCPB-CCT2_HUMAN	0	5253100	0	4.62743E-06	#DIV/0!	up
sp P78524 ST5-ST5_HUMAN	sp P78524 ST5-ST5_HUMAN	0	36975000	0	3.25711E-05	#DIV/0!	up
sp P78559 MAP1A-MAP1A_HUMAN	sp P78559 MAP1A-MAP1A_HUMAN;sp P4	0	3120000	0	2.74839E-06	#DIV/0!	up
sp P80723 BASP1-BASP1_HUMAN	sp P80723 BASP1-BASP1_HUMAN	0	21002000	0	1.85005E-05	#DIV/0!	up
sp P83111 LACTB-LACTB_HUMAN	sp P83111 LACTB-LACTB_HUMAN	0	119980000	0	0.00010569	#DIV/0!	up
sp Q00341 VIGLN-HDLBP_HUMAN	sp Q00341 VIGLN-HDLBP_HUMAN	0	55572000	0	4.89531E-05	#DIV/0!	up

sp Q00577 PURA-PURA_HUMAN	sp Q00577 PURA-PURA_HUMAN	0	22987000	0	2.02491E-05	#DIV/0!	up
sp Q01813 PFKAP-PFKP_HUMAN	sp Q01813 PFKAP-PFKP_HUMAN	0	94882000	0	8.3581E-05	#DIV/0!	up
sp Q01995 TAGL-TAGLN_HUMAN	sp Q01995 TAGL-TAGLN_HUMAN	0	16571000	0	1.45973E-05	#DIV/0!	up
sp Q02880 TOP2B-TOP2B_HUMAN	sp Q02880 TOP2B-TOP2B_HUMAN	0	10050000	0	8.85299E-06	#DIV/0!	up
sp Q02978 M2OM-SLC25A11_HUMAN	sp Q02978 M2OM-SLC25A11_HUMAN	0	7076200	0	6.23339E-06	#DIV/0!	up
sp Q06210 GFPT1-GFPT1_HUMAN	sp Q06210 GFPT1-GFPT1_HUMAN	0	3954700	0	3.48367E-06	#DIV/0!	up
sp Q07955 SRSF1-SRSF1_HUMAN	sp Q07955 SRSF1-SRSF1_HUMAN	0	46871000	0	4.12884E-05	#DIV/0!	up
sp Q12797 ASPH-ASPH_HUMAN	sp Q12797 ASPH-ASPH_HUMAN	0	44429000	0	3.91373E-05	#DIV/0!	up
sp Q12874 SF3A3-SF3A3_HUMAN	sp Q12874 SF3A3-SF3A3_HUMAN	0	900180000	0	0.000792964	#DIV/0!	up
sp Q12906 ILF3-ILF3_HUMAN	sp Q12906 ILF3-ILF3_HUMAN	0	105110000	0	9.25908E-05	#DIV/0!	up
sp Q13162 PRDX4-PRDX4_HUMAN	sp Q13162 PRDX4-PRDX4_HUMAN	0	6809500	0	5.99845E-06	#DIV/0!	up
sp Q13200 PSMD2-PSMD2_HUMAN	sp Q13200 PSMD2-PSMD2_HUMAN	0	12512000	0	1.10218E-05	#DIV/0!	up
sp Q13243 SRSF5-SRSF5_HUMAN	sp Q13243 SRSF5-SRSF5_HUMAN	0	15227000	0	1.34134E-05	#DIV/0!	up
sp Q13310 PABP4-PABPC4_HUMAN	sp Q13310 PABP4-PABPC4_HUMAN	0	119870000	0	0.000105593	#DIV/0!	up
sp Q13435 SF3B2-SF3B2_HUMAN	sp Q13435 SF3B2-SF3B2_HUMAN	0	670570000	0	0.000590701	#DIV/0!	up
sp Q13501 SQSTM1-SQSTM1_HUMAN	sp Q13501 SQSTM1-SQSTM1_HUMAN	0	7147100	0	6.29584E-06	#DIV/0!	up
sp Q13557 KCC2D-CAMK2D_HUMAN	sp Q13557 KCC2D-CAMK2D_HUMAN	0	6064700	0	5.34236E-06	#DIV/0!	up
sp Q13561 DCTN2-DCTN2_HUMAN	sp Q13561 DCTN2-DCTN2_HUMAN	0	86858000	0	7.65127E-05	#DIV/0!	up
sp Q13765 NACA-NACA_HUMAN	sp Q13765 NACA-NACA_HUMAN	0	11324000	0	9.97525E-06	#DIV/0!	up
sp Q14152 EIF3A-EIF3A_HUMAN	sp Q14152 EIF3A-EIF3A_HUMAN	0	5640400	0	4.9686E-06	#DIV/0!	up
sp Q14203 DCTN1-DCTN1_HUMAN	sp Q14203 DCTN1-DCTN1_HUMAN	0	61603000	0	5.42657E-05	#DIV/0!	up
sp Q14247 SRC8-CTTN_HUMAN	sp Q14247 SRC8-CTTN_HUMAN	0	168050000	0	0.000148034	#DIV/0!	up
sp Q14257 RCN2-RCN2_HUMAN	sp Q14257 RCN2-RCN2_HUMAN	0	32067000	0	2.82476E-05	#DIV/0!	up
sp Q14258 TRI25-TRIM25_HUMAN	sp Q14258 TRI25-TRIM25_HUMAN	0	540760000	0	0.000476352	#DIV/0!	up
sp Q14699 RFTN1-RFTN1_HUMAN	sp Q14699 RFTN1-RFTN1_HUMAN	0	8921200	0	7.85864E-06	#DIV/0!	up
sp Q14847 LASP1-LASP1_HUMAN	sp Q14847 LASP1-LASP1_HUMAN	0	7652600	0	6.74113E-06	#DIV/0!	up
sp Q15019 SEPT2-SEPTIN2_HUMAN	sp Q15019 SEPT2-SEPTIN2_HUMAN	0	14225000	0	1.25307E-05	#DIV/0!	up
sp Q15027 ACAP1-ACAP1_HUMAN	sp Q15027 ACAP1-ACAP1_HUMAN	0	80516000	0	7.09261E-05	#DIV/0!	up
sp Q15029 U5S1-EFTUD2_HUMAN	sp Q15029 U5S1-EFTUD2_HUMAN	0	6711300	0	5.91195E-06	#DIV/0!	up
sp Q15084 PDIA6-PDIA6_HUMAN	sp Q15084 PDIA6-PDIA6_HUMAN	0	11249000	0	9.90918E-06	#DIV/0!	up
sp Q15293 RCN1-RCN1_HUMAN	sp Q15293 RCN1-RCN1_HUMAN	0	16657000	0	1.46731E-05	#DIV/0!	up
sp Q15393 SF3B3-SF3B3_HUMAN	sp Q15393 SF3B3-SF3B3_HUMAN	0	948460000	0	0.000835493	#DIV/0!	up
sp Q15427 SF3B4-SF3B4_HUMAN	sp Q15427 SF3B4-SF3B4_HUMAN	0	28890000	0	2.5449E-05	#DIV/0!	up
sp Q15428 SF3A2-SF3A2_HUMAN	sp Q15428 SF3A2-SF3A2_HUMAN	0	232620000	0	0.000204914	#DIV/0!	up
sp Q15459 SF3A1-SF3A1_HUMAN	sp Q15459 SF3A1-SF3A1_HUMAN	0	1898400000	0	0.00167229	#DIV/0!	up
sp Q15582 BGH3-TGFB1_HUMAN	sp Q15582 BGH3-TGFB1_HUMAN	0	14549000	0	1.28161E-05	#DIV/0!	up
sp Q15717 ELAV1-ELAVL1_HUMAN	sp Q15717 ELAV1-ELAVL1_HUMAN	0	25276000	0	2.22655E-05	#DIV/0!	up
sp Q16181 SEPT7-SEPTIN7_HUMAN	sp Q16181 SEPT7-SEPTIN7_HUMAN	0	13979000	0	1.2314E-05	#DIV/0!	up
sp Q16658 FSCN1-FSCN1_HUMAN	sp Q16658 FSCN1-FSCN1_HUMAN	0	4408000	0	3.88298E-06	#DIV/0!	up
sp Q2VIR3 IF2GL-EIF2S3B_HUMAN	sp Q2VIR3 IF2GL-EIF2S3B_HUMAN	0	2724600	0	2.40009E-06	#DIV/0!	up
sp Q32MZ4 LRRF1-LRRFIP1_HUMAN	sp Q32MZ4 LRRF1-LRRFIP1_HUMAN	0	75391000	0	6.64115E-05	#DIV/0!	up
sp Q32P44 EMAL3-EML3_HUMAN	sp Q32P44 EMAL3-EML3_HUMAN	0	2809600	0	2.47496E-06	#DIV/0!	up
sp Q3ZCM7 TBB8-TUBB8_HUMAN	sp Q3ZCM7 TBB8-TUBB8_HUMAN	0	26956000	0	2.37454E-05	#DIV/0!	up

sp Q58FF8 H90B2-HSP90AB2P_H	sp Q58FF8 H90B2-HSP90AB2P_HUMAN	0	8809700	0	7.76042E-06	#DIV/0!	up
sp Q5EB52 MEST-MEST_HUMAN	sp Q5EB52 MEST-MEST_HUMAN	0	13895000	0	1.224E-05	#DIV/0!	up
sp Q5JSL3 DOC11-DOCK11_HUM	sp Q5JSL3 DOC11-DOCK11_HUMAN	0	3574900	0	3.14911E-06	#DIV/0!	up
sp Q5M775 CYTSB-SPECC1_HUM	sp Q5M775 CYTSB-SPECC1_HUMAN	0	15786000	0	1.39058E-05	#DIV/0!	up
sp Q5SSJ5 HP1B3-HP1BP3_HUM	sp Q5SSJ5 HP1B3-HP1BP3_HUMAN	0	111690000	0	9.83871E-05	#DIV/0!	up
sp Q5VT25 MRCKA-CDC42BPA_H	sp Q5VT25 MRCKA-CDC42BPA_HUMAN	0	5817200	0	5.12434E-06	#DIV/0!	up
sp Q63ZY3 KANK2-KANK2_HUM	sp Q63ZY3 KANK2-KANK2_HUMAN	0	12608000	0	1.11063E-05	#DIV/0!	up
sp Q6NYC8 PPR18-PPP1R18_HUM	sp Q6NYC8 PPR18-PPP1R18_HUMAN	0	6217200	0	5.4767E-06	#DIV/0!	up
sp Q6PKG0 LARP1-LARP1_HUM	sp Q6PKG0 LARP1-LARP1_HUMAN	0	7478600	0	6.58786E-06	#DIV/0!	up
sp Q6UWE0 LRSM1-LRSAM1_HU	sp Q6UWE0 LRSM1-LRSAM1_HUMAN	0	82940000	0	7.30614E-05	#DIV/0!	up
sp Q6YHK3 CD109-CD109_HUM	sp Q6YHK3 CD109-CD109_HUMAN	0	43140000	0	3.80018E-05	#DIV/0!	up
sp Q6ZXV5 TMTC3-TMTC3_HUM	sp Q6ZXV5 TMTC3-TMTC3_HUMAN	0	19895000	0	1.75254E-05	#DIV/0!	up
sp Q702N8 XIRP1-XIRP1_HUM	sp Q702N8 XIRP1-XIRP1_HUMAN	0	6503600	0	5.72899E-06	#DIV/0!	up
sp Q7L014 DDX46-DDX46_HUM	sp Q7L014 DDX46-DDX46_HUMAN	0	96471000	0	8.49808E-05	#DIV/0!	up
sp Q7RTV0 PHF5A-PHF5A_HUM	sp Q7RTV0 PHF5A-PHF5A_HUMAN	0	71934000	0	6.33663E-05	#DIV/0!	up
sp Q7Z2W4 ZCCHV-ZC3HAV1_H	sp Q7Z2W4 ZCCHV-ZC3HAV1_HUMAN	0	8151700	0	7.18079E-06	#DIV/0!	up
sp Q7Z478 DHX29-DHX29_HUM	sp Q7Z478 DHX29-DHX29_HUMAN	0	17648000	0	1.5546E-05	#DIV/0!	up
sp Q86UP2 KTN1-KTN1_HUMAN	sp Q86UP2 KTN1-KTN1_HUMAN	0	18548000	0	1.63388E-05	#DIV/0!	up
sp Q86V48 LUZP1-LUZP1_HUM	sp Q86V48 LUZP1-LUZP1_HUMAN	0	35496000	0	3.12682E-05	#DIV/0!	up
sp Q86YZ3 HORN-HRNR_HUM	sp Q86YZ3 HORN-HRNR_HUMAN;CON	0	5284900	0	4.65544E-06	#DIV/0!	up
sp Q8IY17 PLPL6-PNPLA6_HUM	sp Q8IY17 PLPL6-PNPLA6_HUMAN	0	7571600	0	6.66978E-06	#DIV/0!	up
sp Q8N556 AFAP1-AFAP1_HUM	sp Q8N556 AFAP1-AFAP1_HUMAN	0	4872500	0	4.29216E-06	#DIV/0!	up
sp Q8N5C1 CAHM5-CALHM5_HU	sp Q8N5C1 CAHM5-CALHM5_HUMAN	0	16369000	0	1.44194E-05	#DIV/0!	up
sp Q8N8S7 ENAH-ENAH_HUM	sp Q8N8S7 ENAH-ENAH_HUMAN	0	6503800	0	5.72916E-06	#DIV/0!	up
sp Q8NBN3 TM87A-TMEM87A_H	sp Q8NBN3 TM87A-TMEM87A_HUMAN	0	34812000	0	3.06657E-05	#DIV/0!	up
sp Q8NEV1 CSK23-CSNK2A3_HU	sp Q8NEV1 CSK23-CSNK2A3_HUMAN;sp	0	42273000	0	3.72381E-05	#DIV/0!	up
sp Q8TDN6 BRX1-BRIX1_HUM	sp Q8TDN6 BRX1-BRIX1_HUMAN	0	6935600	0	6.10953E-06	#DIV/0!	up
sp Q8TES7 FBF1-FBF1_HUMAN	sp Q8TES7 FBF1-FBF1_HUMAN	0	22377000	0	1.97118E-05	#DIV/0!	up
sp Q8TF72 SHRM3-SHROOM3_H	sp Q8TF72 SHRM3-SHROOM3_HUMAN	0	6502000	0	5.72758E-06	#DIV/0!	up
sp Q8WUJ3 CEMIP-CEMIP_HUM	sp Q8WUJ3 CEMIP-CEMIP_HUMAN	0	90953000	0	8.012E-05	#DIV/0!	up
sp Q8WX93 PALLD-PALLD_HUM	sp Q8WX93 PALLD-PALLD_HUMAN	0	23996000	0	2.11379E-05	#DIV/0!	up
sp Q8WYL5 SSH1-SSH1_HUMAN	sp Q8WYL5 SSH1-SSH1_HUMAN	0	2066000	0	1.81993E-06	#DIV/0!	up
sp Q92522 H1X-H1FX_HUMAN	sp Q92522 H1X-H1FX_HUMAN	0	16035000	0	1.41251E-05	#DIV/0!	up
sp Q92614 MY18A-MYO18A_HU	sp Q92614 MY18A-MYO18A_HUMAN	0	155190000	0	0.000136706	#DIV/0!	up
sp Q92626 PXDN-PXDN_HUMAN	sp Q92626 PXDN-PXDN_HUMAN	0	8285000	0	7.29821E-06	#DIV/0!	up
sp Q92747 ARC1A-ARPC1A_HUM	sp Q92747 ARC1A-ARPC1A_HUMAN	0	85039000	0	7.49104E-05	#DIV/0!	up
sp Q92900 RENT1-UPF1_HUMAN	sp Q92900 RENT1-UPF1_HUMAN	0	102520000	0	9.03093E-05	#DIV/0!	up
sp Q92908 GATA6-GATA6_HUM	sp Q92908 GATA6-GATA6_HUMAN	0	4023500	0	3.54428E-06	#DIV/0!	up
sp Q92974 ARHG2-ARHGEF2_HU	sp Q92974 ARHG2-ARHGEF2_HUMAN	0	1716700	0	1.51223E-06	#DIV/0!	up
sp Q969Q0 RL36L-RPL36AL_HU	sp Q969Q0 RL36L-RPL36AL_HUMAN;spP	0	18880000	0	1.66313E-05	#DIV/0!	up
sp Q96AQ6 PBIP1-PBXIP1_HUM	sp Q96AQ6 PBIP1-PBXIP1_HUMAN	0	7506600	0	6.61252E-06	#DIV/0!	up
sp Q96CW1 AP2M1-AP2M1_HUM	sp Q96CW1 AP2M1-AP2M1_HUMAN	0	38861000	0	3.42324E-05	#DIV/0!	up
sp Q96ER9 MITOK-CCDC51_HUM	sp Q96ER9 MITOK-CCDC51_HUMAN	0	51110000	0	4.50225E-05	#DIV/0!	up

sp Q96HS1 PGAM5-PGAM5_HUM	sp Q96HS1 PGAM5-PGAM5_HUMAN	0	34459000	0	3.03547E-05	#DIV/0!	up
sp Q96K37 S35E1-SLC35E1_HUM	sp Q96K37 S35E1-SLC35E1_HUMAN	0	6163400	0	5.4293E-06	#DIV/0!	up
sp Q96L58 B3GT6-B3GALT6_HU	sp Q96L58 B3GT6-B3GALT6_HUMAN	0	2487900	0	2.19158E-06	#DIV/0!	up
sp Q96LZ7 RMD2-RMDN2_HUM	sp Q96LZ7 RMD2-RMDN2_HUMAN	0	12878000	0	1.13442E-05	#DIV/0!	up
sp Q96N67 DOCK7-DOCK7_HUM	sp Q96N67 DOCK7-DOCK7_HUMAN	0	28380000	0	2.49998E-05	#DIV/0!	up
sp Q96SB3 NEB2-PPP1R9B_HUM	sp Q96SB3 NEB2-PPP1R9B_HUMAN	0	28453000	0	2.50641E-05	#DIV/0!	up
sp Q99784 NOE1-OLFM1_HUMA	sp Q99784 NOE1-OLFM1_HUMAN	0	13266000	0	1.16859E-05	#DIV/0!	up
sp Q99848 EBP2-EBNA1BP2_HU	sp Q99848 EBP2-EBNA1BP2_HUMAN	0	16433000	0	1.44757E-05	#DIV/0!	up
sp Q99878 H2A1J-H2AC14_HUM	sp Q99878 H2A1J-H2AC14_HUMAN;sp Q9	0	88343000	0	7.78209E-05	#DIV/0!	up
sp Q9BPW8 NIPS1-NIPSNAP1_HU	sp Q9BPW8 NIPS1-NIPSNAP1_HUMAN	0	5474300	0	4.82228E-06	#DIV/0!	up
sp Q9BQE3 TBA1C-TUBA1C_HU	sp Q9BQE3 TBA1C-TUBA1C_HUMAN	0	14492000	0	1.27659E-05	#DIV/0!	up
sp Q9BQG0 MBB1A-MYBBP1A_I	sp Q9BQG0 MBB1A-MYBBP1A_HUMAN	0	15199000	0	1.33887E-05	#DIV/0!	up
sp Q9BT78 CSN4-COPS4_HUMA	sp Q9BT78 CSN4-COPS4_HUMAN	0	27287000	0	2.4037E-05	#DIV/0!	up
sp Q9BUF5 TBB6-TUBB6_HUMA	sp Q9BUF5 TBB6-TUBB6_HUMAN	0	195090000	0	0.000171854	#DIV/0!	up
sp Q9BUJ2 HNRL1-HNRNPUL1_I	sp Q9BUJ2 HNRL1-HNRNPUL1_HUMAN	0	14477000	0	1.27527E-05	#DIV/0!	up
sp Q9BXN1 ASPN-ASPN_HUMA	sp Q9BXN1 ASPN-ASPN_HUMAN	0	14083000	0	1.24056E-05	#DIV/0!	up
sp Q9BZF9 UACA-UACA_HUMA	sp Q9BZF9 UACA-UACA_HUMAN	0	77701000	0	6.84464E-05	#DIV/0!	up
sp Q9H2D6 TARA-TRIOBP_HUM	sp Q9H2D6 TARA-TRIOBP_HUMAN	0	28205000	0	2.48456E-05	#DIV/0!	up
sp Q9H3U1 UN45A-UNC45A_HU	sp Q9H3U1 UN45A-UNC45A_HUMAN	0	8087800	0	7.1245E-06	#DIV/0!	up
sp Q9H4M9 EHD1-EHD1_HUMA	sp Q9H4M9 EHD1-EHD1_HUMAN;sp Q9N	0	2321100	0	2.04464E-06	#DIV/0!	up
sp Q9H772 GREM2-GREM2_HUM	sp Q9H772 GREM2-GREM2_HUMAN;sp O	0	7987700	0	7.03632E-06	#DIV/0!	up
sp Q9HC84 MUC5B-MUC5B_HU	sp Q9HC84 MUC5B-MUC5B_HUMAN	0	36434000	0	3.20945E-05	#DIV/0!	up
sp Q9HCE1 MOV10-MOV10_HUM	sp Q9HCE1 MOV10-MOV10_HUMAN	0	17546000	0	1.54562E-05	#DIV/0!	up
sp Q9HD67 MYO10-MYO10_HUM	sp Q9HD67 MYO10-MYO10_HUMAN	0	12914000	0	1.13759E-05	#DIV/0!	up
sp Q9NR12 PDLI7-PDLIM7_HUM	sp Q9NR12 PDLI7-PDLIM7_HUMAN	0	36085000	0	3.17871E-05	#DIV/0!	up
sp Q9NR30 DDX21-DDX21_HUM	sp Q9NR30 DDX21-DDX21_HUMAN	0	2288300	0	2.01575E-06	#DIV/0!	up
sp Q9NS87 KIF15-KIF15_HUMAN	sp Q9NS87 KIF15-KIF15_HUMAN	0	6563300	0	5.78157E-06	#DIV/0!	up
sp Q9NUQ6 SPS2L-SPATS2L_HU	sp Q9NUQ6 SPS2L-SPATS2L_HUMAN	0	6971600	0	6.14124E-06	#DIV/0!	up
sp Q9NVA2 SEP11-SEPTIN11_HU	sp Q9NVA2 SEP11-SEPTIN11_HUMAN	0	24233000	0	2.13467E-05	#DIV/0!	up
sp Q9NZ01 TECR-TECR_HUMAN	sp Q9NZ01 TECR-TECR_HUMAN	0	27230000	0	2.39868E-05	#DIV/0!	up
sp Q9NZ32 ARP10-ACR10_HUM	sp Q9NZ32 ARP10-ACR10_HUMAN	0	8783700	0	7.73751E-06	#DIV/0!	up
sp Q9NZB2 F120A-FAM120A_HU	sp Q9NZB2 F120A-FAM120A_HUMAN	0	31197000	0	2.74813E-05	#DIV/0!	up
sp Q9NZI8 IF2B1-IGF2BP1_HUM	sp Q9NZI8 IF2B1-IGF2BP1_HUMAN	0	26877000	0	2.36758E-05	#DIV/0!	up
sp Q9P0V3 SH3B4-SH3BP4_HUM	sp Q9P0V3 SH3B4-SH3BP4_HUMAN	0	12945000	0	1.14032E-05	#DIV/0!	up
sp Q9P0X4 CAC11-CACNA1I_HU	sp Q9P0X4 CAC11-CACNA1I_HUMAN	0	37438000	0	3.29789E-05	#DIV/0!	up
sp Q9P121 NTRI-NTM_HUMAN	sp Q9P121 NTRI-NTM_HUMAN	0	17198000	0	1.51496E-05	#DIV/0!	up
sp Q9P266 JCAD-JCAD_HUMAN	sp Q9P266 JCAD-JCAD_HUMAN	0	3604700	0	3.17536E-06	#DIV/0!	up
sp Q9P2E9 RRBP1-RRBP1_HUM	sp Q9P2E9 RRBP1-RRBP1_HUMAN	0	16582000	0	1.4607E-05	#DIV/0!	up
sp Q9UBI6 GBG12-GNG12_HUM	sp Q9UBI6 GBG12-GNG12_HUMAN	0	7944900	0	6.99862E-06	#DIV/0!	up
sp Q9UBM7 DHCR7-DHCR7_HU	sp Q9UBM7 DHCR7-DHCR7_HUMAN	0	4514100	0	3.97645E-06	#DIV/0!	up
sp Q9UEY8 ADDG-ADD3_HUMA	sp Q9UEY8 ADDG-ADD3_HUMAN	0	7108900	0	6.26219E-06	#DIV/0!	up
sp Q9UGR2 Z3H7B-ZC3H7B_HUM	sp Q9UGR2 Z3H7B-ZC3H7B_HUMAN	0	3851100	0	3.39241E-06	#DIV/0!	up
sp Q9UHB9 SRP68-SRP68_HUMA	sp Q9UHB9 SRP68-SRP68_HUMAN	0	6227500	0	5.48577E-06	#DIV/0!	up

sp Q9UJW0 DCTN4-DCTN4_HUMAN	0	64617000	0	5.69208E-05	#DIV/0!	up
sp Q9UN86 G3BP2-G3BP2_HUMAN	0	19621000	0	1.7284E-05	#DIV/0!	up
sp Q9UNX3 RL26L-RPL26L1_HUMAN	0	9973400	0	8.78551E-06	#DIV/0!	up
sp Q9UNP3 MACF1-MACF1_HUMAN	0	6248000	0	5.50383E-06	#DIV/0!	up
sp Q9UQ03 COR2B-CORO2B_HUMAN	0	210610000	0	0.000185525	#DIV/0!	up
sp Q9UQE7 SMC3-SMC3_HUMAN	0	4850300	0	4.2726E-06	#DIV/0!	up
sp Q9Y230 RUVB2-RUVBL2_HUMAN	0	9447900	0	8.3226E-06	#DIV/0!	up
sp Q9Y265 RUVB1-RUVBL1_HUMAN	0	26687000	0	2.35084E-05	#DIV/0!	up
sp Q9Y2D5 AKAP2-AKAP2_HUMAN	0	10243000	0	9.023E-06	#DIV/0!	up
sp Q9Y2X3 NOP58-NOP58_HUMAN	0	9579200	0	8.43826E-06	#DIV/0!	up
sp Q9Y3B4 SF3B6-SF3B6_HUMAN	0	66837000	0	5.88763E-05	#DIV/0!	up
sp Q9Y3I0 RTCB-RTCB_HUMAN	0	23887000	0	2.10419E-05	#DIV/0!	up
sp Q9Y490 TLN1-TLN1_HUMAN	0	40795000	0	3.59361E-05	#DIV/0!	up
sp Q9Y4F1 FARP1-FARP1_HUMAN	0	26662000	0	2.34864E-05	#DIV/0!	up
sp Q9Y4P3 TBL2-TBL2_HUMAN	0	24578000	0	2.16506E-05	#DIV/0!	up
sp Q9Y678 COPG1-COPG1_HUMAN	0	13395000	0	1.17996E-05	#DIV/0!	up
sp Q9Y6C2 EMIL1-EMILIN1_HUMAN	0	8640200	0	7.6111E-06	#DIV/0!	up
sp Q9Y6M1 IF2B2-IGF2BP2_HUMAN	0	128260000	0	0.000112984	#DIV/0!	up
sp O00159 MYO1C-MYO1C_HUMAN	1429400000	21272000000	0.008907742	0.018738387	2.10360676	up
sp O15143 ARC1B-ARPC1B_HUMAN	8103400	139520000	5.04988E-05	0.000122902	2.433768141	up
sp O15144 ARPC2-ARPC2_HUMAN	1396200	272500000	8.70085E-06	0.000240044	27.58855055	up
sp O15145 ARPC3-ARPC3_HUMAN	2673400	197940000	1.66601E-05	0.000174364	10.46597356	up
sp O43390 HNRPR-HNRNPR_HUMAN	1813500	65950000	1.13014E-05	5.8095E-05	5.140522343	up
sp O43707 ACTN4-ACTN4_HUMAN	26508000	759340000	0.000165193	0.000668898	4.049200923	up
sp O43795 MYO1B-MYO1B_HUMAN	574480000	7527300000	0.003580047	0.006630757	1.852142181	up
sp O43852 CALU-CALU_HUMAN	3039300	57733000	1.89403E-05	5.08567E-05	2.685100631	up
sp O43854 EDIL3-EDIL3_HUMAN	25807000	479270000	0.000160824	0.000422186	2.625141602	up
sp O60716 CTND1-CTNND1_HUMAN	678520	8075100	4.2284E-06	7.11331E-06	1.682268322	up
sp O75165 DJC13-DNAJC13_HUMAN	3510500	584430000	2.18768E-05	0.000514821	23.53279626	up
sp O75369 FLNB-FLNB_HUMAN	7072700	192720000	4.40757E-05	0.000169766	3.851692084	up
sp O95425 SVIL-SVIL_HUMAN	29173000	1278900000	0.0001818	0.001126576	6.196771847	up
sp P01857 IGHG1-IGHG1_HUMAN	123650000	11915000000	0.000770563	0.010495857	13.62102961	up
sp P02452 CO1A1-COL1A1_HUMAN	11838000	374470000	7.37721E-05	0.000329869	4.471453371	up
sp P02751 FINC-FN1_HUMAN	177430000	3357800000	0.001105709	0.002957867	2.675086215	up
sp P04216 THY1-THY1_HUMAN	4511700	135850000	2.8116E-05	0.00011967	4.256272645	up
sp P04899 GNAI2-GNAI2_HUMAN	21184000	258760000	0.000132015	0.00022794	1.726629616	up
sp P05388 RLA0-RPLP0_HUMAN	20147000	1018400000	0.000125552	0.000897103	7.145259654	up
sp P06396 GELS-GSN_HUMAN	227770000	3983100000	0.001419418	0.003508691	2.471921639	up
sp P06753 TPM3-TPM3_HUMAN	37880000	1067000000	0.000236061	0.000939914	3.981662641	up
sp P07237 PDIA1-P4HB_HUMAN	3707600	152090000	2.3105E-05	0.000133975	5.79852852	up
sp P07437 TBB5-TUBB_HUMAN	135930000	1574600000	0.000847089	0.001387056	1.637438289	up
sp P07814 SYEP-EPRS_HUMAN	628650	19554000	3.91762E-06	1.7225E-05	4.39679991	up
sp P07900 HS90A-HSP90AA1_HUMAN	1323800	89261000	8.24966E-06	7.86295E-05	9.531239496	up

sp P07951 TPM2-TPM2_HUMAN	sp P07951 TPM2-TPM2_HUMAN	13474000	196750000	8.39673E-05	0.000173316	2.064088001 up
sp P08123 CO1A2-COL1A2_HUMAN	sp P08123 CO1A2-COL1A2_HUMAN	4420000	231890000	2.75446E-05	0.000204271	7.416000705 up
sp P08238 HS90B-HSP90AB1_HUMAN	sp P08238 HS90B-HSP90AB1_HUMAN	37952000	421260000	0.000236509	0.000371086	1.569009479 up
sp P08670 VIME-VIM_HUMAN;sp	sp P08670 VIME-VIM_HUMAN	666050000	7528200000	0.004150694	0.00663155	1.597696659 up
sp P09493 TPM1-TPM1_HUMAN	sp P09493 TPM1-TPM1_HUMAN	196170000	3305300000	0.001222493	0.00291162	2.381706834 up
sp P0DP25 CALM3-CALM3_HUMAN;sp P0	sp P0DP25 CALM3-CALM3_HUMAN;sp P0	6230000	79035000	3.88241E-05	6.96215E-05	1.793252406 up
sp P11021 BIP-HSPA5_HUMAN	sp P11021 BIP-HSPA5_HUMAN	61087000	922370000	0.000380682	0.000812511	2.134353659 up
sp P11142 HSP7C-HSPA8_HUMAN	sp P11142 HSP7C-HSPA8_HUMAN	45606000	560950000	0.000284208	0.000494138	1.738650063 up
sp P11940 PABP1-PABPC1_HUMAN;sp Q9	sp P11940 PABP1-PABPC1_HUMAN;sp Q9	11366000	686850000	7.08307E-05	0.000605042	8.542092344 up
sp P12109 CO6A1-COL6A1_HUMAN	sp P12109 CO6A1-COL6A1_HUMAN	2358100	100730000	1.46952E-05	8.87325E-05	6.038187946 up
sp P12111 CO6A3-COL6A3_HUMAN	sp P12111 CO6A3-COL6A3_HUMAN	17876000	677950000	0.0001114	0.000597202	5.36089536 up
sp P12236 ADT3-SLC25A6_HUMAN;sp P1.	sp P12236 ADT3-SLC25A6_HUMAN;sp P1.	14789000	180290000	9.21622E-05	0.000158816	1.72322839 up
sp P12268 IMDH2-IMPDH2_HUMAN	sp P12268 IMDH2-IMPDH2_HUMAN	1974700	55433000	1.23059E-05	4.88306E-05	3.968051207 up
sp P12814 ACTN1-ACTN1_HUMAN	sp P12814 ACTN1-ACTN1_HUMAN	113090000	1958300000	0.000704755	0.001725056	2.447738569 up
sp P12956 XRCC6-XRCC6_HUMAN	sp P12956 XRCC6-XRCC6_HUMAN	3510900	223150000	2.18792E-05	0.000196572	8.984386831 up
sp P13639 EF2-EEF2_HUMAN	sp P13639 EF2-EEF2_HUMAN	800670	75436000	4.98962E-06	6.64512E-05	13.31788028 up
sp P14618 KPYM-PKM_HUMAN	sp P14618 KPYM-PKM_HUMAN	12544000	179610000	7.81718E-05	0.000158217	2.0239719 up
sp P14625 ENPL-HSP90B1_HUMAN	sp P14625 ENPL-HSP90B1_HUMAN	6127700	101070000	3.81866E-05	8.9032E-05	2.331496576 up
sp P16401 H15-H1-5_HUMAN	sp P16401 H15-H1-5_HUMAN	6365900	141510000	3.9671E-05	0.000124655	3.142225365 up
sp P18124 RL7-RPL7_HUMAN	sp P18124 RL7-RPL7_HUMAN	51773000	623030000	0.000322639	0.000548824	1.70104436 up
sp P18621 RL17-RPL17_HUMAN	sp P18621 RL17-RPL17_HUMAN	5066100	264600000	3.15709E-05	0.000233085	7.382884818 up
sp P19338 NUCL-NCL_HUMAN	sp P19338 NUCL-NCL_HUMAN	13647000	411120000	8.50454E-05	0.000362153	4.258350691 up
sp P21333 FLNA-FLNA_HUMAN	sp P21333 FLNA-FLNA_HUMAN	230010000	3681800000	0.001433377	0.003243277	2.262681816 up
sp P21589 5NTD-NT5E_HUMAN	sp P21589 5NTD-NT5E_HUMAN	8595600	316550000	5.35661E-05	0.000278847	5.205663985 up
sp P23396 RS3-RPS3_HUMAN	sp P23396 RS3-RPS3_HUMAN	11843000	273370000	7.38033E-05	0.00024081	3.26286522 up
sp P25398 RS12-RPS12_HUMAN	sp P25398 RS12-RPS12_HUMAN	5367300	103340000	3.3448E-05	9.10316E-05	2.721589357 up
sp P26373 RL13-RPL13_HUMAN	sp P26373 RL13-RPL13_HUMAN	20768000	264390000	0.000129422	0.0002329	1.799535261 up
sp P27635 RL10-RPL10_HUMAN;sp P2	sp P27635 RL10-RPL10_HUMAN	2573100	308530000	1.60351E-05	0.000271782	16.94926015 up
sp P30050 RL12-RPL12_HUMAN	sp P30050 RL12-RPL12_HUMAN	8396000	488210000	5.23222E-05	0.000430061	8.219478279 up
sp P35268 RL22-RPL22_HUMAN;sp P3	sp P35268 RL22-RPL22_HUMAN	3378600	70019000	2.10548E-05	6.16793E-05	2.929470557 up
sp P35580 MYH10-MYH10_HUMAN	sp P35580 MYH10-MYH10_HUMAN	1620600000	27805000000	0.010099263	0.02449327	2.425253143 up
sp P36542 ATPG-ATP5F1C_HUMAN	sp P36542 ATPG-ATP5F1C_HUMAN	4731700	51336000	2.9487E-05	4.52216E-05	1.533609661 up
sp P36578 RL4-RPL4_HUMAN	sp P36578 RL4-RPL4_HUMAN	46116000	995010000	0.000287386	0.000876499	3.049901589 up
sp P39019 RS19-RPS19_HUMAN	sp P39019 RS19-RPS19_HUMAN	2060400	84014000	1.284E-05	7.40075E-05	5.763816321 up
sp P39023 RL3-RPL3_HUMAN;sp P3	sp P39023 RL3-RPL3_HUMAN	29976000	645770000	0.000186805	0.000568855	3.045188609 up
sp P40429 RL13A-RPL13A_HUMAN	sp P40429 RL13A-RPL13A_HUMAN	15969000	229420000	9.95157E-05	0.000202095	2.030783218 up
sp P42766 RL35-RPL35_HUMAN	sp P42766 RL35-RPL35_HUMAN	2526000	99438000	1.57415E-05	8.75944E-05	5.564537144 up
sp P46776 RL27A-RPL27A_HUMAN	sp P46776 RL27A-RPL27A_HUMAN	8275400	88252000	5.15707E-05	7.77407E-05	1.50745922 up
sp P46778 RL21-RPL21_HUMAN	sp P46778 RL21-RPL21_HUMAN	9588700	140870000	5.97549E-05	0.000124092	2.076676243 up
sp P46779 RL28-RPL28_HUMAN	sp P46779 RL28-RPL28_HUMAN	4188600	166930000	2.61025E-05	0.000147048	5.633463907 up
sp P46781 RS9-RPS9_HUMAN	sp P46781 RS9-RPS9_HUMAN	6762000	105750000	4.21395E-05	9.31546E-05	2.210625731 up
sp P46782 RS5-RPS5_HUMAN	sp P46782 RS5-RPS5_HUMAN	4326700	64486000	2.69632E-05	5.68054E-05	2.106777476 up
sp P46940 IQGA1-IQGAP1_HUMAN	sp P46940 IQGA1-IQGAP1_HUMAN	3572000	161190000	2.226E-05	0.000141991	6.378765788 up

sp P47755 CAZA2-CAPZA2_HUMAN	sp P47755 CAZA2-CAPZA2_HUMAN	29448000	600210000	0.000183514	0.000528722	2.881094037	up
sp P47756 CAPZB-CAPZB_HUMAN	sp P47756 CAPZB-CAPZB_HUMAN	45350000	1305400000	0.000282612	0.00114992	4.068893551	up
sp P49327 FAS-FASN_HUMAN	sp P49327 FAS-FASN_HUMAN	3610700	225340000	2.25012E-05	0.000198501	8.821793654	up
sp P49411 EFTU-TUFM_HUMAN	sp P49411 EFTU-TUFM_HUMAN	5697700	130560000	3.5507E-05	0.00011501	3.239071792	up
sp P50454 SERPH-SERPINH1_HUMAN	sp P50454 SERPH-SERPINH1_HUMAN	13768000	157020000	8.57995E-05	0.000138318	1.612107977	up
sp P50914 RL14-RPL14_HUMAN	sp P50914 RL14-RPL14_HUMAN	23619000	361710000	0.000147189	0.000318628	2.164756342	up
sp P52272 HNRPM-HNRNPM_HUMAN	sp P52272 HNRPM-HNRNPM_HUMAN	15255000	236630000	9.50662E-05	0.000208446	2.192641365	up
sp P52907 CAZA1-CAPZA1_HUMAN	sp P52907 CAZA1-CAPZA1_HUMAN	76335000	1629200000	0.000475705	0.001435153	3.016898525	up
sp P53621 COPA-COPA_HUMAN	sp P53621 COPA-COPA_HUMAN	2351100	410960000	1.46516E-05	0.000362012	24.70804948	up
sp P55072 TERA-VCP_HUMAN	sp P55072 TERA-VCP_HUMAN	734700	27836000	4.57851E-06	2.45206E-05	5.355583553	up
sp P55084 ECHB-HADHB_HUMAN	sp P55084 ECHB-HADHB_HUMAN	3030200	63175000	1.88836E-05	5.56505E-05	2.947026003	up
sp P59998 ARPC4-ARPC4_HUMAN	sp P59998 ARPC4-ARPC4_HUMAN	15624000	202010000	9.73657E-05	0.000177949	1.827639979	up
sp P60866 RS20-RPS20_HUMAN	sp P60866 RS20-RPS20_HUMAN	9324100	126150000	5.8106E-05	0.000111125	1.912451118	up
sp P61158 ARP3-ACTR3_HUMAN	sp P61158 ARP3-ACTR3_HUMAN	18827000	738940000	0.000117326	0.000650928	5.548020598	up
sp P61160 ARP2-ACTR2_HUMAN	sp P61160 ARP2-ACTR2_HUMAN	17367000	456840000	0.000108228	0.000402428	3.71834198	up
sp P61163 ACTZ-ACTR1A_HUMAN	sp P61163 ACTZ-ACTR1A_HUMAN	3190400	80806000	1.9882E-05	7.11816E-05	3.580209855	up
sp P61247 RS3A-RPS3A_HUMAN	sp P61247 RS3A-RPS3A_HUMAN	9210100	293150000	5.73955E-05	0.000258234	4.499202746	up
sp P61254 RL26-RPL26_HUMAN	sp P61254 RL26-RPL26_HUMAN	5239100	249660000	3.2649E-05	0.000219924	6.736003271	up
sp P61313 RL15-RPL15_HUMAN	sp P61313 RL15-RPL15_HUMAN	3386200	290430000	2.11021E-05	0.000255838	12.12380327	up
sp P61353 RL27-RPL27_HUMAN	sp P61353 RL27-RPL27_HUMAN	18836000	468290000	0.000117382	0.000412514	3.514278805	up
sp P62081 RS7-RPS7_HUMAN	sp P62081 RS7-RPS7_HUMAN	10155000	157390000	6.3284E-05	0.000138644	2.190822633	up
sp P62241 RS8-RPS8_HUMAN	sp P62241 RS8-RPS8_HUMAN	10111000	189120000	6.30098E-05	0.000166595	2.643950743	up
sp P62244 RS15A-RPS15A_HUMAN	sp P62244 RS15A-RPS15A_HUMAN	1306700	210200000	8.1431E-06	0.000185164	22.73876282	up
sp P62249 RS16-RPS16_HUMAN	sp P62249 RS16-RPS16_HUMAN	10123000	174830000	6.30846E-05	0.000154007	2.441275158	up
sp P62263 RS14-RPS14_HUMAN	sp P62263 RS14-RPS14_HUMAN	16340000	180930000	0.000101828	0.00015938	1.565195325	up
sp P62269 RS18-RPS18_HUMAN	sp P62269 RS18-RPS18_HUMAN	6944500	190560000	4.32768E-05	0.000167863	3.878830243	up
sp P62277 RS13-RPS13_HUMAN	sp P62277 RS13-RPS13_HUMAN	15976000	433470000	9.95593E-05	0.000381841	3.835314701	up
sp P62280 RS11-RPS11_HUMAN	sp P62280 RS11-RPS11_HUMAN	7921200	240930000	4.93634E-05	0.000212234	4.299420402	up
sp P62424 RL7A-RPL7A_HUMAN	sp P62424 RL7A-RPL7A_HUMAN	12201000	621500000	7.60343E-05	0.000547476	7.200384976	up
sp P62701 RS4X-RPS4X_HUMAN	sp P62701 RS4X-RPS4X_HUMAN	18689000	359110000	0.000116466	0.000316338	2.716135589	up
sp P62753 RS6-RPS6_HUMAN	sp P62753 RS6-RPS6_HUMAN	4186200	144280000	2.60876E-05	0.000127095	4.871875388	up
sp P62829 RL23-RPL23_HUMAN	sp P62829 RL23-RPL23_HUMAN	3817900	197390000	2.37924E-05	0.00017388	7.308203118	up
sp P62847 RS24-RPS24_HUMAN	sp P62847 RS24-RPS24_HUMAN	5488300	96219000	3.4202E-05	8.47588E-05	2.478180912	up
sp P62851 RS25-RPS25_HUMAN	sp P62851 RS25-RPS25_HUMAN	2391000	76315000	1.49002E-05	6.72255E-05	4.511701346	up
sp P62854 RS26-RPS26_HUMAN	sp P62854 RS26-RPS26_HUMAN;sp Q5JNZ	4212400	129010000	2.62509E-05	0.000113644	4.329161448	up
sp P62888 RL30-RPL30_HUMAN	sp P62888 RL30-RPL30_HUMAN	12453000	264040000	7.76047E-05	0.000232591	2.997131148	up
sp P62899 RL31-RPL31_HUMAN	sp P62899 RL31-RPL31_HUMAN	15193000	171050000	9.46798E-05	0.000150677	1.59143737	up
sp P62906 RL10A-RPL10A_HUMAN	sp P62906 RL10A-RPL10A_HUMAN	63085000	743630000	0.000393133	0.00065506	1.666252469	up
sp P62910 RL32-RPL32_HUMAN	sp P62910 RL32-RPL32_HUMAN	3885000	104100000	2.42106E-05	9.17011E-05	3.787648924	up
sp P62913 RL11-RPL11_HUMAN	sp P62913 RL11-RPL11_HUMAN	20333000	393780000	0.000126711	0.000346879	2.737550915	up
sp P62917 RL8-RPL8_HUMAN	sp P62917 RL8-RPL8_HUMAN	20587000	416380000	0.000128294	0.000366787	2.858951629	up
sp P62979 RS27A-RPS27A_HUMAN	sp P62979 RS27A-RPS27A_HUMAN;sp P62	33296000	357960000	0.000207494	0.000315325	1.519681049	up
sp P63244 RACK1-RACK1_HUMAN	sp P63244 RACK1-RACK1_HUMAN	3849100	208500000	2.39868E-05	0.000183666	7.656968778	up

sp P63261 ACTG-ACTG1_HUMAN	sp P63261 ACTG-ACTG1_HUMAN	781530000	829380000	0.004870343	0.007305962	1.500092073	up
sp P63267 ACTH-ACTG2_HUMAN	sp P63267 ACTH-ACTG2_HUMAN	3432700	60364000	2.13919E-05	5.31743E-05	2.485719799	up
sp P67936 TPM4-TPM4_HUMAN	sp P67936 TPM4-TPM4_HUMAN	71628000	162010000	0.000446372	0.001427137	3.19719414	up
sp P68363 TBA1B-TUBA1B_HUMAN	sp P68363 TBA1B-TUBA1B_HUMAN;sp P68371 TBB4B-TUBB4B_HUMAN	1885700	65062000	1.17513E-05	5.73128E-05	4.877135475	up
sp P68371 TBB4B-TUBB4B_HUMAN	sp P68371 TBB4B-TUBB4B_HUMAN	301620000	422550000	0.001879637	0.003722219	1.980286294	up
sp P78527 PRKDC-PRKDC_HUMAN	sp P78527 PRKDC-PRKDC_HUMAN	2741600	280380000	1.70851E-05	0.000246985	14.45616016	up
sp P83731 RL24-RPL24_HUMAN	sp P83731 RL24-RPL24_HUMAN	11189000	156650000	6.97277E-05	0.000137992	1.979015231	up
sp P84098 RL19-RPL19_HUMAN	sp P84098 RL19-RPL19_HUMAN	5664100	95013000	3.52976E-05	8.36964E-05	2.371166933	up
sp P84103 SRSF3-SRSF3_HUMAN	sp P84103 SRSF3-SRSF3_HUMAN	2953400	65674000	1.8405E-05	5.78519E-05	3.143266538	up
sp Q00325 MPCP-SLC25A3_HUMAN	sp Q00325 MPCP-SLC25A3_HUMAN	4814100	64545000	3.00005E-05	5.68573E-05	1.895210741	up
sp Q00610 CLH1-CLTC_HUMAN	sp Q00610 CLH1-CLTC_HUMAN	54832000	117220000	0.000341702	0.001032584	3.02188297	up
sp Q00839 HNRPU-HNRNPU_HUMAN	sp Q00839 HNRPU-HNRNPU_HUMAN	4917300	140830000	3.06437E-05	0.000124056	4.048354037	up
sp Q01082 SPTB2-SPTBN1_HUMAN	sp Q01082 SPTB2-SPTBN1_HUMAN	94468000	303380000	0.000588706	0.002672458	4.539544077	up
sp Q02543 RL18A-RPL18A_HUMAN	sp Q02543 RL18A-RPL18A_HUMAN	4509700	179080000	2.81036E-05	0.000157751	5.613186147	up
sp Q02878 RL6-RPL6_HUMAN	sp Q02878 RL6-RPL6_HUMAN	34434000	426240000	0.000214586	0.000375472	1.749752969	up
sp Q03135 CAV1-CAV1_HUMAN	sp Q03135 CAV1-CAV1_HUMAN	8870100	349090000	5.52767E-05	0.000307511	5.563126089	up
sp Q05682 CALD1-CALD1_HUMAN	sp Q05682 CALD1-CALD1_HUMAN	56980000	178520000	0.000355088	0.001572573	4.428681464	up
sp Q07065 CKAP4-CKAP4_HUMAN	sp Q07065 CKAP4-CKAP4_HUMAN	124860000	265770000	0.000778103	0.002341153	3.008795265	up
sp Q07157 ZO1-TJP1_HUMAN	sp Q07157 ZO1-TJP1_HUMAN	552500	147640000	3.44307E-06	0.000130055	37.77302494	up
sp Q08211 DHX9-DHX9_HUMAN	sp Q08211 DHX9-DHX9_HUMAN	2036700	101520000	1.26923E-05	8.94284E-05	7.045868879	up
sp Q08431 MFGM-MFGE8_HUMAN	sp Q08431 MFGM-MFGE8_HUMAN	34796000	888200000	0.000216842	0.00078241	3.608207109	up
sp Q0ZGT2 NEXN-NEXN_HUMAN	sp Q0ZGT2 NEXN-NEXN_HUMAN	229340000	483490000	0.001429202	0.004259037	2.980009846	up
sp Q12905 ILF2-ILF2_HUMAN	sp Q12905 ILF2-ILF2_HUMAN	1989900	72820000	1.24007E-05	6.41467E-05	5.172844624	up
sp Q12965 MYO1E-MYO1E_HUMAN	sp Q12965 MYO1E-MYO1E_HUMAN	4593200	320020000	2.86239E-05	0.000281904	9.848538249	up
sp Q13009 TIAM1-TIAM1_HUMAN	sp Q13009 TIAM1-TIAM1_HUMAN	1636600	18124000	1.0199E-05	1.59653E-05	1.565386261	up
sp Q13045 FLII-FLII_HUMAN	sp Q13045 FLII-FLII_HUMAN	5330300	479800000	3.32174E-05	0.000422653	12.7238518	up
sp Q13509 TBB3-TUBB3_HUMAN	sp Q13509 TBB3-TUBB3_HUMAN	10496000	230300000	6.5409E-05	0.00020287	3.101559572	up
sp Q13813 SPTN1-SPTAN1_HUMAN	sp Q13813 SPTN1-SPTAN1_HUMAN	83626000	333510000	0.000521141	0.002937871	5.637383078	up
sp Q13885 TBB2A-TUBB2A_HUMAN	sp Q13885 TBB2A-TUBB2A_HUMAN;sp Q14204 DYHC1-DYNC1H1_HUMAN	2907100	83509000	1.81165E-05	7.35626E-05	4.060535607	up
sp Q14204 DYHC1-DYNC1H1_HUMAN	sp Q14204 DYHC1-DYNC1H1_HUMAN	897110	278590000	5.59061E-06	0.000245408	43.89649422	up
sp Q14315 FLNC-FLNC_HUMAN	sp Q14315 FLNC-FLNC_HUMAN	15670000	514270000	9.76524E-05	0.000453018	4.639083667	up
sp Q14764 MVP-MVP_HUMAN	sp Q14764 MVP-MVP_HUMAN	2962400	320810000	1.84611E-05	0.0002826	15.3078504	up
sp Q15149 PLEC-PLEC_HUMAN	sp Q15149 PLEC-PLEC_HUMAN	72369000	268840000	0.00045099	0.002368197	5.251112544	up
sp Q15746 MYLK-MYLK_HUMAN	sp Q15746 MYLK-MYLK_HUMAN	268110000	549450000	0.001670809	0.004840075	2.896844453	up
sp Q16643 DREB-DBN1_HUMAN	sp Q16643 DREB-DBN1_HUMAN	949690000	1147800000	0.005918283	0.010110906	1.708418897	up
sp Q562R1 ACTBL-ACTBL2_HUMAN	sp Q562R1 ACTBL-ACTBL2_HUMAN	3079500	44763000	1.91908E-05	3.94315E-05	2.054702682	up
sp Q69YQ0 CYTSA-SPECC1L_HUMAN	sp Q69YQ0 CYTSA-SPECC1L_HUMAN	2553400	308360000	1.59123E-05	0.000271633	17.07061604	up
sp Q6NZI2 CAVN1-CAVIN1_HUMAN	sp Q6NZI2 CAVN1-CAVIN1_HUMAN	35060000	760560000	0.000218487	0.000669973	3.066419587	up
sp Q6WCQ1 MPRIP-MPRIP_HUMAN	sp Q6WCQ1 MPRIP-MPRIP_HUMAN	73593000	256990000	0.000458617	0.002263811	4.936165683	up
sp Q71U36 TBA1A-TUBA1A_HUMAN	sp Q71U36 TBA1A-TUBA1A_HUMAN;sp Q71UM5 RS27L-RPS27L_HUMAN	415330000	464300000	0.002588256	0.004089993	1.580212136	up
sp Q71UM5 RS27L-RPS27L_HUMAN	sp Q71UM5 RS27L-RPS27L_HUMAN	6981500	96264000	4.35073E-05	8.47984E-05	1.949059838	up
sp Q8NHM4 TRY6-PRSS3P2_HUMAN	sp Q8NHM4 TRY6-PRSS3P2_HUMAN;sp Q8WWI1 LMO7-LMO7_HUMAN	3379800	40993000	2.10623E-05	3.61105E-05	1.714465349	up
sp Q8WWI1 LMO7-LMO7_HUMAN	sp Q8WWI1 LMO7-LMO7_HUMAN	2119300	400730000	1.32071E-05	0.000353001	26.72818259	up

sp Q969G5 CAVN3-CAVIN3_HUMAN	sp Q969G5 CAVN3-CAVIN3_HUMAN	5834200	76167000	3.63576E-05	6.70951E-05	1.845421383	up
sp Q99715 COCA1-COL12A1_HUMAN	sp Q99715 COCA1-COL12A1_HUMAN	2205400	111260000	1.37436E-05	9.80083E-05	7.13118489	up
sp Q9NVR1 ATD3A-ATAD3A_HUMAN	sp Q9NVR1 ATD3A-ATAD3A_HUMAN	6072900	208130000	3.78451E-05	0.000183341	4.844495598	up
sp Q9NZR1 TMOD2-TMOD2_HUMAN	sp Q9NZR1 TMOD2-TMOD2_HUMAN	2460800	61084000	1.53352E-05	5.38086E-05	3.50882058	up
sp Q9P0K7 RAI14-RAI14_HUMAN	sp Q9P0K7 RAI14-RAI14_HUMAN	85998000	3047400000	0.000535923	0.002684438	5.009001055	up
sp Q9UHB6 LIMA1-LIMA1_HUMAN	sp Q9UHB6 LIMA1-LIMA1_HUMAN	208770000	2918500000	0.001301014	0.00257089	1.976066782	up
sp Q9ULV4 COR1C-CORO1C_HUMAN	sp Q9ULV4 COR1C-CORO1C_HUMAN	1239100	150920000	7.72183E-06	0.000132945	17.21672136	up
sp Q9UM54 MYO6-MYO6_HUMAN	sp Q9UM54 MYO6-MYO6_HUMAN	26900000	1605400000	0.000167636	0.001414188	8.436085833	up
sp Q9Y3U8 RL36-RPL36_HUMAN	sp Q9Y3U8 RL36-RPL36_HUMAN	3051000	58452000	1.90132E-05	5.149E-05	2.708115477	up
sp Q9Y4I1 MYO5A-MYO5A_HUMAN	sp Q9Y4I1 MYO5A-MYO5A_HUMAN	9062100	545880000	5.64732E-05	0.000480863	8.514876313	up
sp Q9Y608 LRRF2-LRRFIP2_HUMAN	sp Q9Y608 LRRF2-LRRFIP2_HUMAN	5804300	119870000	3.61713E-05	0.000105593	2.919245808	up
sp Q9Y6R6 Z780B-ZNF780B_HUMAN	sp Q9Y6R6 Z780B-ZNF780B_HUMAN	44876000	599690000	0.000279658	0.000528264	1.88895964	up
sp O43324 MCA3-EEF1E1_HUMAN	sp O43324 MCA3-EEF1E1_HUMAN	1394800	6239100	8.69212E-06	5.49599E-06	0.632295395	down
sp P00338 LDHA-LDHA_HUMAN	sp P00338 LDHA-LDHA_HUMAN	21104000	93518000	0.000131516	8.23795E-05	0.626383693	down
sp P00558 PGK1-PGK1_HUMAN	sp P00558 PGK1-PGK1_HUMAN	4905500	8715600	3.05701E-05	7.67752E-06	0.251144702	down
sp P00742 FA10-F10_HUMAN	sp P00742 FA10-F10_HUMAN	46887000	0	0.000292191	0	0	down
sp P01876 IGHA1-IGHA1_HUMAN	sp P01876 IGHA1-IGHA1_HUMAN	12283000	0	7.65453E-05	0	0	down
sp P02533 K1C14-KRT14_HUMAN	sp P02533 K1C14-KRT14_HUMAN;CON	1029800000	78993000	0.006417513	6.95845E-05	0.010842907	down
sp P02538 K2C6A-KRT6A_HUMAN	sp P02538 K2C6A-KRT6A_HUMAN;CON	1209800000	86842000	0.007539238	7.64986E-05	0.010146733	down
sp P02545 LMNA-LMNA_HUMAN	sp P02545 LMNA-LMNA_HUMAN	8129000	9245700	5.06583E-05	8.14449E-06	0.160772841	down
sp P02647 APOA1-APOA1_HUMAN	sp P02647 APOA1-APOA1_HUMAN	8555100	0	5.33137E-05	0	0	down
sp P02768 ALBU-ALB_HUMAN	sp P02768 ALBU-ALB_HUMAN;CON	11949000	0	7.44638E-05	0	0	down
sp P04075 ALDOA-ALDOA_HUMAN	sp P04075 ALDOA-ALDOA_HUMAN	18628000	8110600	0.000116086	7.14458E-06	0.061545565	down
sp P04083 ANXA1-ANXA1_HUMAN	sp P04083 ANXA1-ANXA1_HUMAN	226070000	8174100	0.001408824	7.20052E-06	0.005111013	down
sp P04264 K2C1-KRT1_HUMAN	sp P04264 K2C1-KRT1_HUMAN;CON	3132400000	2875200000	0.019520506	0.002532748	0.129748055	down
sp P04792 HSPB1-HSPB1_HUMAN	sp P04792 HSPB1-HSPB1_HUMAN	40293000	55015000	0.000251098	4.84624E-05	0.193001873	down
sp P05787 K2C8-KRT8_HUMAN	sp P05787 K2C8-KRT8_HUMAN;CON	3423700	0	2.13358E-05	0	0	down
sp P06576 ATPB-ATP5F1B_HUMAN	sp P06576 ATPB-ATP5F1B_HUMAN	3871600	9993100	2.41271E-05	8.80287E-06	0.364854547	down
sp P06733 ENOA-ENO1_HUMAN	sp P06733 ENOA-ENO1_HUMAN	12515000	55210000	7.7991E-05	4.86342E-05	0.623586787	down
sp P08727 K1C19-KRT19_HUMAN	sp P08727 K1C19-KRT19_HUMAN;CON	64544000	7080900	0.000402226	6.23753E-06	0.015507529	down
sp P08779 K1C16-KRT16_HUMAN	sp P08779 K1C16-KRT16_HUMAN;CON	154640000	51801000	0.000963686	4.56312E-05	0.04735069	down
sp P09211 GSTP1-GSTP1_HUMAN	sp P09211 GSTP1-GSTP1_HUMAN	15669000	16036000	9.76462E-05	1.4126E-05	0.144665435	down
sp P09496 CLCA-CLTA_HUMAN	sp P09496 CLCA-CLTA_HUMAN	2770400	2111100	1.72646E-05	1.85966E-06	0.107715038	down
sp P10809 CH60-HSPD1_HUMAN	sp P10809 CH60-HSPD1_HUMAN	5415900	17352000	3.37508E-05	1.52853E-05	0.452886018	down
sp P13645 K1C10-KRT10_HUMAN	sp P13645 K1C10-KRT10_HUMAN;CON	3992900000	1893500000	0.024882974	0.001667974	0.067032727	down
sp P13646 K1C13-KRT13_HUMAN	sp P13646 K1C13-KRT13_HUMAN;CON	59281000	0	0.000369428	0	0	down
sp P13647 K2C5-KRT5_HUMAN	sp P13647 K2C5-KRT5_HUMAN;CON	569340000	33170000	0.003548016	2.92193E-05	0.008235383	down
sp P14923 PLAK-JUP_HUMAN	sp P14923 PLAK-JUP_HUMAN	70755000	0	0.000440931	0	0	down
sp P15924 DESP-DSP_HUMAN	sp P15924 DESP-DSP_HUMAN	106750000	0	0.000665245	0	0	down
sp P19013 K2C4-KRT4_HUMAN	sp P19013 K2C4-KRT4_HUMAN;CON	21817000	0	0.000135959	0	0	down
sp P22528 SPR1B-SPRR1B_HUMAN	sp P22528 SPR1B-SPRR1B_HUMAN	3852200	0	2.40062E-05	0	0	down
sp P23528 COF1-CFL1_HUMAN	sp P23528 COF1-CFL1_HUMAN;sp Q9Y28	3868600	7153300	2.41084E-05	6.3013E-06	0.261374144	down
sp P30838 AL3A1-ALDH3A1_HUMAN	sp P30838 AL3A1-ALDH3A1_HUMAN	9841200	0	6.13284E-05	0	0	down

sp P31943 HNRH1-HNRNPH1_HUMAN;sp	2989200	13456000	1.86281E-05	1.18533E-05	0.636313322	down
sp P31947 I433S-SFN_HUMAN	17781000	0	0.000110808	0	0	down
sp P35321 SPR1A-SPRR1A_HUMAN;sp	37640000	0	0.000234565	0	0	down
sp P35908 K22E-KRT2_HUMAN	4518800000	1385400000	0.028160281	0.001220391	0.043337322	down
sp P47929 LEG7-LGALS7_HUMAN	17076000	0	0.000106414	0	0	down
sp P58107 EPIPL-EPPK1_HUMAN;sp	4034500	0	2.51422E-05	0	0	down
sp P60709 ACTB-ACTB_HUMAN	7001000000	2.7872E+11	0.436288672	0.245522899	0.562753321	down
sp P61626 LYSC-LYZ_HUMAN	239260000	4927600	0.001491022	4.3407E-06	0.002911222	down
sp P62805 H4-H4C1_HUMAN	72052000	191640000	0.000449014	0.000168815	0.375967352	down
sp P63104 I433Z-YWHAZ_HUMAN;sp Q04	9150300	19056000	5.70229E-05	1.67863E-05	0.294378727	down
sp P84085 ARF5-ARF5_HUMAN;sp P18085	8906700	0	5.55048E-05	0	0	down
sp Q02413 DSG1-DSG1_HUMAN	26682000	0	0.000166277	0	0	down
sp Q04695 K1C17-KRT17_HUMAN;CON_	154360000	4474600	0.000961941	3.94165E-06	0.004097599	down
sp Q06830 PRDX1-PRDX1_HUMAN	13928000	17809000	8.67966E-05	1.56878E-05	0.180742709	down
sp Q08188 TGM3-TGM3_HUMAN	4104000	0	2.55753E-05	0	0	down
sp Q13835 PKP1-PKP1_HUMAN	5153900	0	3.21181E-05	0	0	down
sp Q14134 TRI29-TRIM29_HUMAN	3158000	0	1.968E-05	0	0	down
sp Q5VTE0 EF1A3-EEF1A1P5_HUMAN;sp	118310000	274340000	0.000737285	0.000241665	0.327776408	down
sp Q71DI3 H32-HIST2H3A_HUMAN;sp Q1	32277000	130840000	0.000201144	0.000115256	0.573003645	down
sp Q8TDL5 BPIB1-BPIFB1_HUMAN	23275000	0	0.000145045	0	0	down
sp Q92841 DDX17-DDX17_HUMAN	2082800	8927100	1.29796E-05	7.86383E-06	0.605860783	down
sp Q96DA0 ZG16B-ZG16B_HUMAN	1657500	0	1.03292E-05	0	0	down
sp Q9UPS8 ANR26-ANKRD26_HUMAN	4170200	0	2.59879E-05	0	0	down